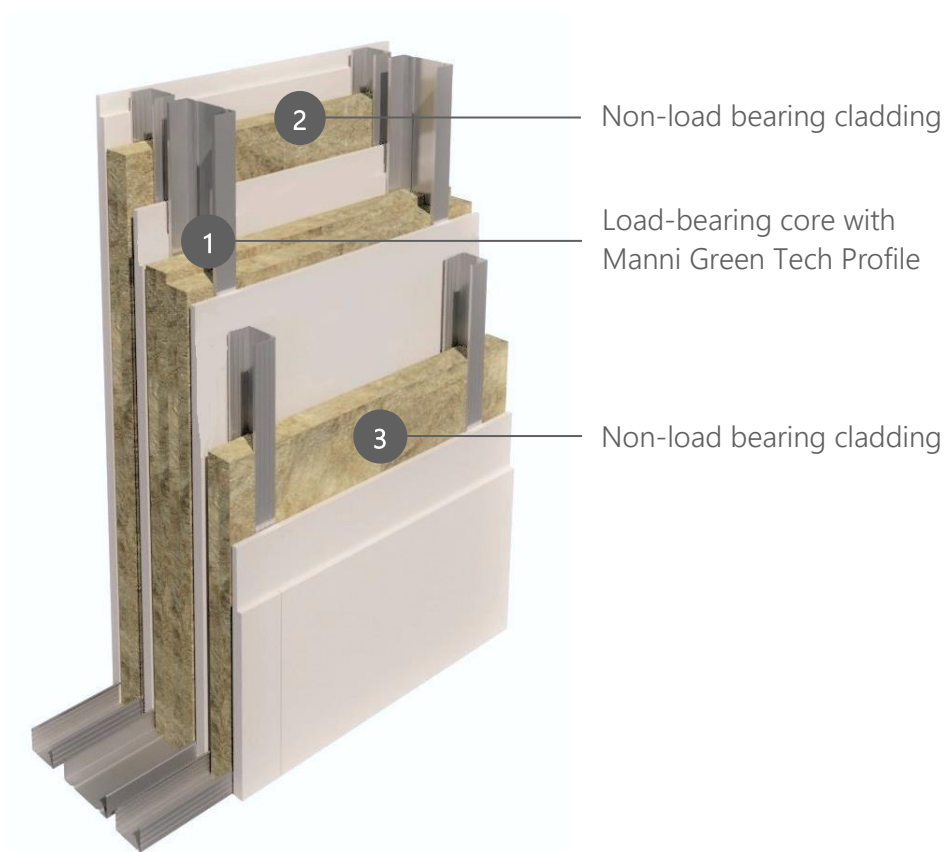




DELIFTA WI 2



BRIEF DESCRIPTION

LOAD BEARING INTERNAL WALL WITH TRIPLE FRAME WITH SLAB CLADDING.

Internal load-bearing walls with structural Manni Green Tech® light steel frame [Lsf] metal frame and cladding in coated plasterboard sheets.

BENEFITS

- ✓ Ideal for interiors
- ✓ High levels of sound absorption
- ✓ Ideal for dividing two units
- ✓ Subdivision of premises
- ✓ Living comfort

RECOMMENDED FIELDS OF APPLICATION



Residential



Corporate
locations



Warehouse



Touristic



Hospital



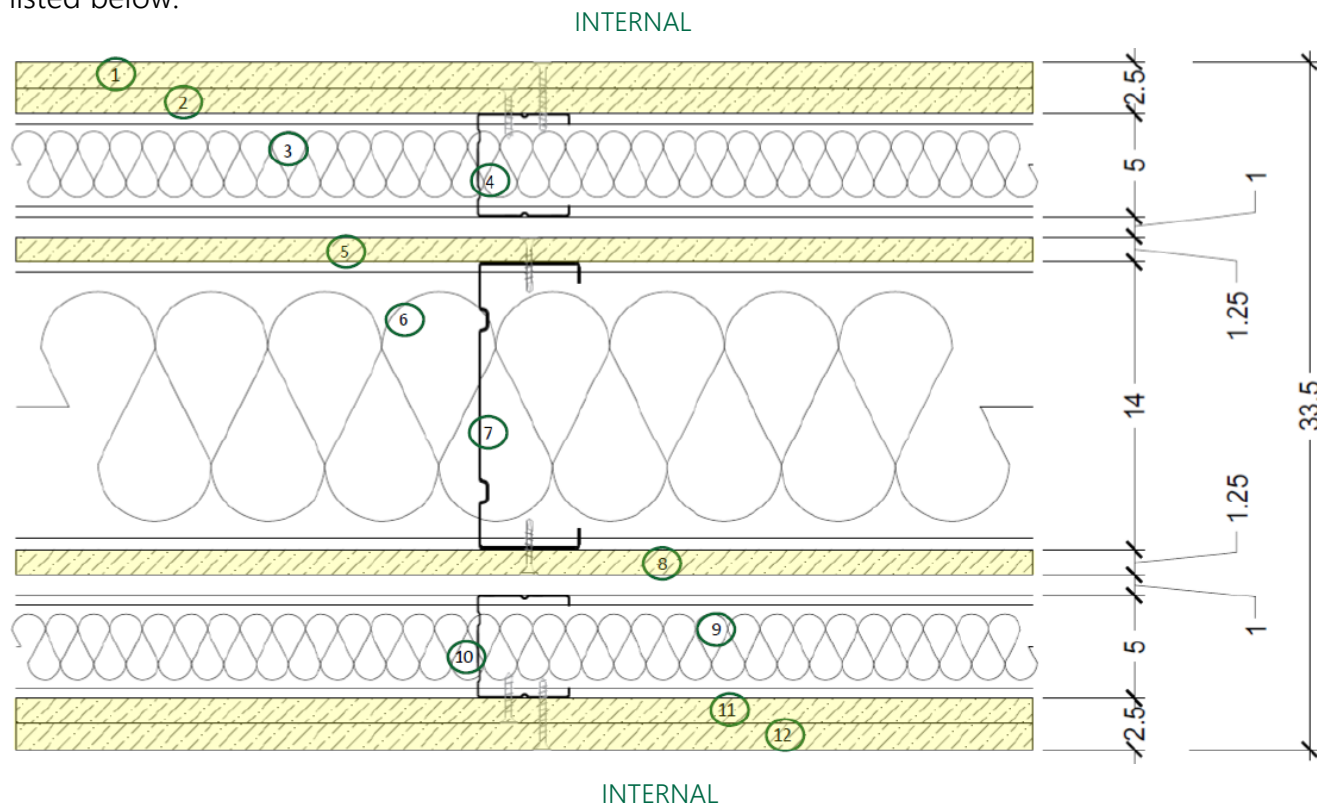
Trade





DETAILS OF LOAD-BEARING STEEL CONSTRUCTION ELEMENTS

Internal load-bearing walls dividing different building units with a structural Manni Green Tech® Light Steel Frame with a total thickness of about 335 mm consisting of the elements listed below:

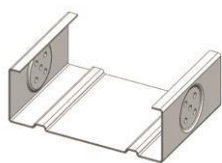


- 1 Manni Green Tech "A" 12.5 mm thick coated plasterboard sheets
- 2 Manni Green Tech "A" 12.5 mm thick coated plasterboard sheets
- 3 Rock wool insulation 40 mm thick and 70kg/m³density
- 4 Steel counter structure with 50 mm section profiles
C-shaped uprights [50/50/50 mm thick 6/10 mm] and U-shaped rails [40/50/40 mm thick 6/10 mm]
- 5 Manni Green Tech "A" 12.5 mm thick coated plasterboard sheets
- 6 Rock wool insulation in double layer, 60+60 mm thickness and 70 Kg/m² density
- 7 Manni Green Tech steel load-bearing profiles 140 mm section [10/50/140/50/10 mm]
C-shaped uprights [10x50/ 140/ 50x10 mm] and C-shaped rails [10x50/140/50x10 mm]
- 8 Manni Green Tech "A" 12.5 mm thick coated plasterboard sheets + 25 mm thick air chamber
- 9 Steel counter structure with 50 mm section profiles
C-shaped uprights [50/50/50 mm thick 6/ 10 mm] and U-shaped rails [40/50/40 mm thick 6/10 mm]
- 10 Rock wool insulation 40 mm thick and 70 kg/m³density
- 11 Manni Green Tech "A" 12.5 mm thick coated plasterboard sheets
- 12 Manni Green Tech "A" 12.5 mm thick coated plasterboard sheets





DETAILS OF LOAD-BEARING STEEL CONSTRUCTION ELEMENTS:

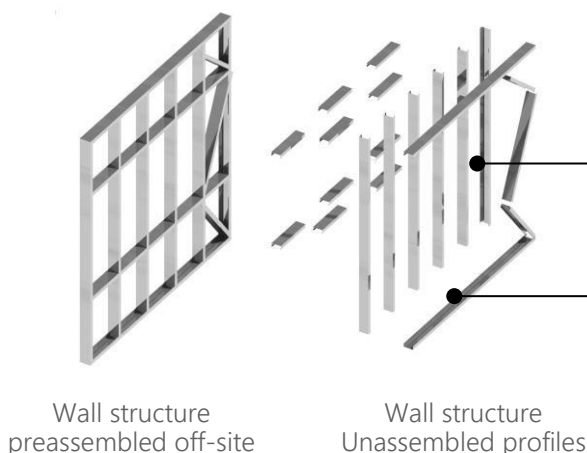


Manni Green Tech "C" profile
10/50/ 140/50/10.

The load-bearing structure will be made with "CFS" profiles by assembling high-strength steel profiles S350GD + Z140, in accordance with standard UNI-EN 10346, cold-formed, with dimensions of :

Manni Green Tech "C" uprights
10/50/140/50/10, centre-to-centre distance to be defined ⁽¹⁾

Manni Green Tech "C" guides
10/50/140/50/10 mm, thickness to be defined ⁽¹⁾



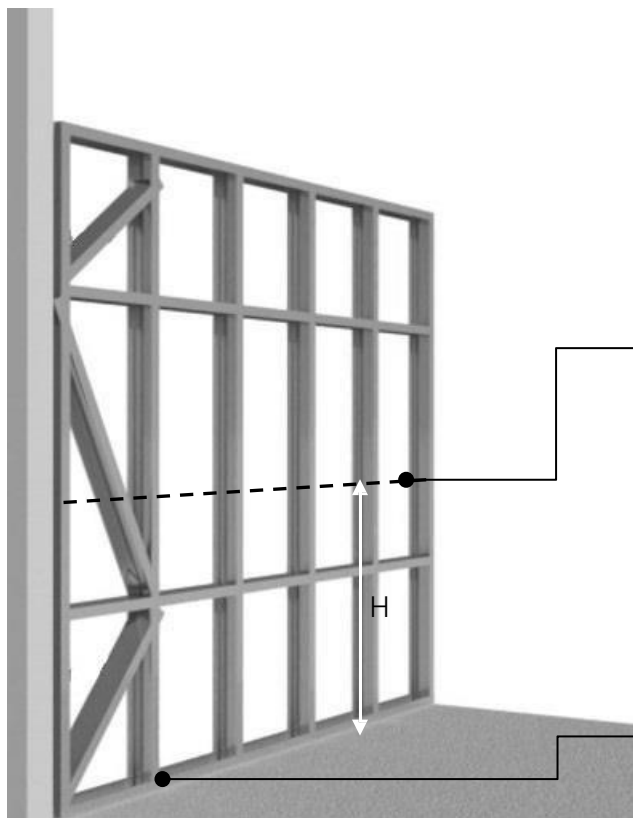
Frames insulated from the perimeter structures with 3.5 mm thick single-sided vinyl tape with an acoustic cutting function. The rails will be fixed to the floor at the base and top by means of dowels suitable for the support placed at a distance between centres to be defined ⁽¹⁾.

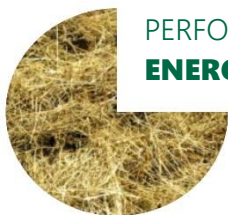
Connections between the rods will be made with self-drilling TEK screws, one to five in number depending on the structural dimensioning.

The vertical profiles can have holes along their core (Service Holes) with a diameter of approximately \varnothing 38.00 mm to allow the passage of ducts for the systems to be inserted in the thickness of the wall, at a variable height (H).

Intersections between profiles should be made by riveting or removing the stiffening lip to ensure the insertion of the incident profile, or the standard distances between rivets and profile edge.

The anchorages to the support surface will be made by means of brackets (HOLD DOWN) anchored to the uprights with self-drilling screws and to the foundation surface with suitably sized mechanical dowels.



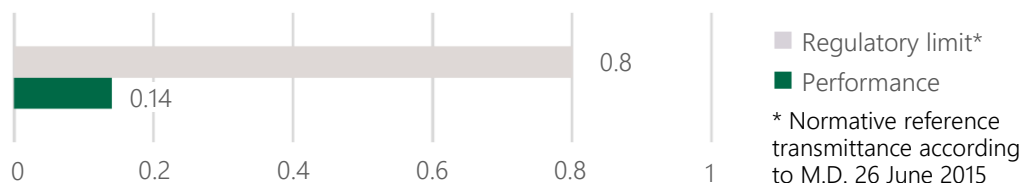


PERFORMANCE DETAILS:

ENERGY EFFICIENCY PERFORMANCE OF THE OPAQUE ENVELOPE

Thickness	335 mm
Surface mass	89 kg/m ²
Resistance	7.02 m ² K/W

TRANSMITTANCE U
0.14 [W/m²K]



NOTE:

The thermal aspect must be assessed by a thermal engineer with specific global analyses concerning not only the typical section of the wall but also thermal bridges, windows and systems, referring to the thermal behaviour of the building as a whole.

For further information please contact Manni Green Tech Technical Service.

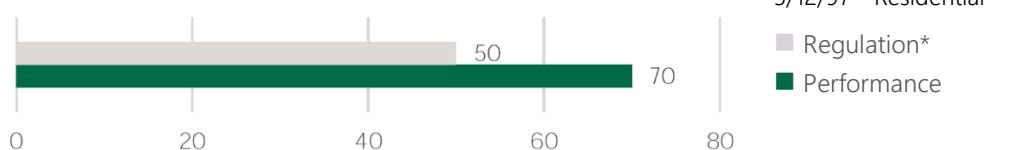


PERFORMANCE DETAILS:

SOUND INSULATION PERFORMANCE

Terms of correction:
C = - 4 dB
Ctr = - 12 dB

SOUNDPROOFING
POWER:
Rw 70 [dB]



NOTE:

Analytical evaluation with 500 Hz evaluation index in the frequency range from 100 Hz to 3150Hz. The acoustic performance must be evaluated with specific global analyses concerning not only the values of soundproofing power "Rw" but also estimating the contributions (negative on the theoretical value) given by lateral transmissions and acoustic bridges.

For further information please contact Manni Green Tech Technical Service.





SPECIFICATION ITEM

INTERNAL LOAD-BEARING WALLS WITH STRUCTURAL MANNI GREEN TECH® LIGHT STEEL FRAME [LSF] METAL FRAME AND CLADDING IN COATED PLASTERBOARD SHEETS.

Supply and installation of load-bearing walls in Manni Green Tech® Light Steel Frame, with a central load-bearing metal frame and double counter walls with coated plasterboard sheets covering both sides of the load-bearing frame, with soundproofing power $R_w = 70\text{dB}$, with a total minimum thickness of 335 mm.

The central load-bearing structure will be made with Manni Green Tech® "LFS" profiles, by assembling high-strength steel profiles S350GD + Z140, according to the UNI-EN 10346 standard, cold-formed, with the following dimensions: C-shaped uprights measuring 10x50/140/50x10 mm and horizontal C-shaped rails measuring 10x50/140/50x10 mm. Internal counter-wall on both sides of the load-bearing structure consisting of a frame with vertical C-shaped uprights measuring 50/50/50 mm, staggered with respect to the external frame, and horizontal U-shaped rails measuring 40/50/40 mm. A double layer of rock wool insulation with a density of 70 kg/m^3 and a thickness of 60+60 mm each (tot.120 mm) is placed in the gap between the 140 mm section uprights. A layer of rock wool panels with a density of 70 kg/m^3 and a thickness of 40 mm is placed between the uprights of the 50 mm section internal frame. The cladding of the supporting structure in Manni Green TECH® Light Steel Frame consists of a single sheet of 12.5 mm thick Manni Green Tech "A" coated plasterboard. The visible cladding of each of the counter walls will be composed of a double layer of 12.5 mm thick Manni Green Tech "A" coated plasterboard sheets. The installation procedures will be in accordance with UNI 11424:2015 and the manufacturer's instructions for installation in accordance with the Manni Green Tech® System Technical Data Sheet.

REFERENCE LEGISLATION

The metal profiles indicated are to be dimensioned according to the actual design conditions. For further information please contact Manni Green Tech Technical Service.

The geometry, the pitch of the uprights, the diagonals and any other element with structural value are determined and dimensioned on the basis of the loads laid down in the technical standards for construction M.D. 17/01/2018 – "Update of the new technical standards for construction" and its implementing Circular no. 7 of 21/10/2019 – "Instructions for the application of the Update of the Technical Standards for Construction" referred to in M.D. 17/01/2018.

The strengths of CFS structural elements are determined in accordance with the structural Eurocodes:

UNI En 1993-1-3:2005
Eurocode 3 Design of steel structures - Part 1-3: General rules

Additional rules for the use of cold-bent profiles and thin sheets;

UNI EN 1993-1-5:2007
Eurocode 3 Design of steel structures - Part 1-5: Slab structural elements;

For seismic action reference is always made to the contents of M.D. 17/01/2018.





CERTIFICATIONS ENVIRONMENTAL SUSTAINABILITY



SLABS

All our slabs comply with the current CE marked reference standard in accordance with UNI EN 520:2009 "Gypsum plasterboards - Definitions, requirements and test methods".

All different slabs comply with specific standards.



INSULATING MATERIAL

All insulation materials used comply with current legislation

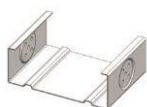
UNI EN 13162:2015 "Thermal insulation products for buildings - Factory made mineral wool (MW) products - Specification".



UNI EN 1090 -1:2012

"Execution of steel and aluminium structures - Part 1: Requirements for conformity assessment of structural components".

CE marking according to the European Regulation n.305/2011 (CPR, Construction Products Regulation)



Manni Green Tech "C" profile
10/ 50/ 140/ 50/ 10

STEEL SUSTAINABILITY

Complies with the UNI EN ISO 14021:2016 standard for recycled content.

The average annual recycled content of steel used by Manni Green Tech during 2019 was 60%, varying according to the type of steel and the type of supply required.

CAM Building all structures meet the minimum requirements imposed by the law on - MINIMUM ENVIRONMENTAL CRITERIA FOR THE CONTRACTING OF DESIGN AND WORK SERVICES FOR THE NEW CONSTRUCTION, RENOVATION AND MAINTENANCE OF PUBLIC BUILDINGS - Art. 2.4.2.5 Cast iron, iron, steel



MANAGEMENT & QUALITY

UNI EN ISO 9001:2015 for the following activity EA:17 - Design and construction of steel structures for civil industrial buildings and plants. Production of cold-formed steels for the building industry.

