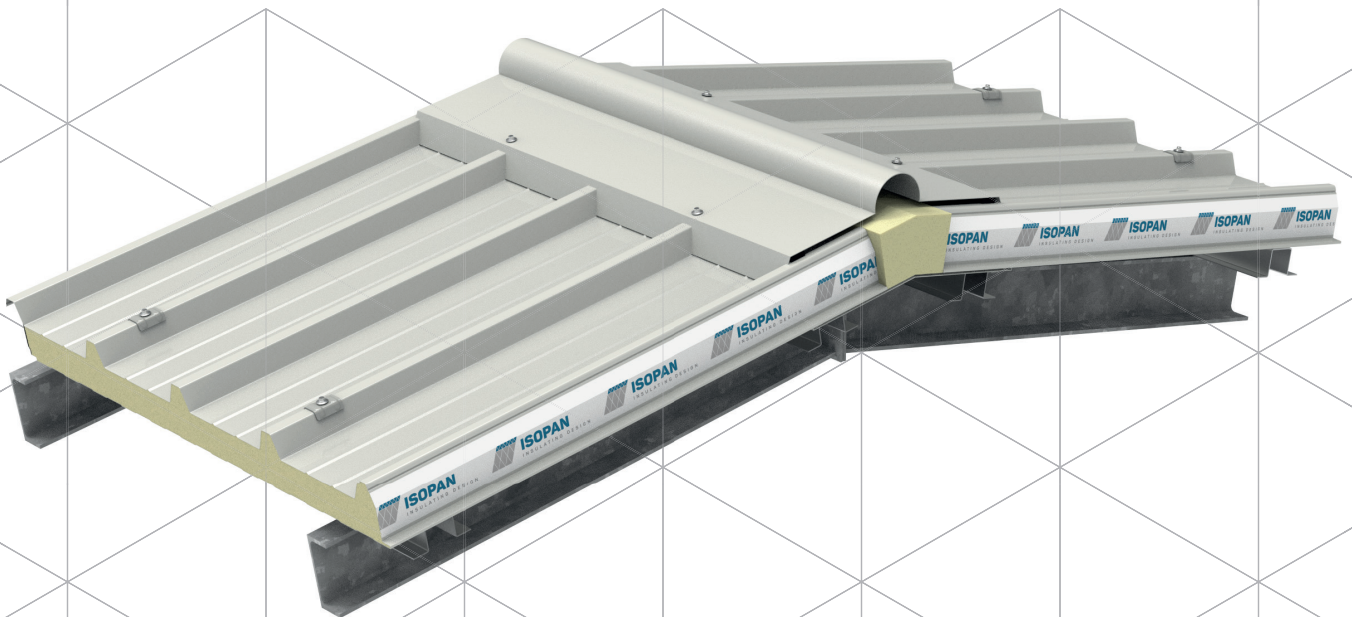


Technical Details and Assembly Drawings

# ROOF DETAILS



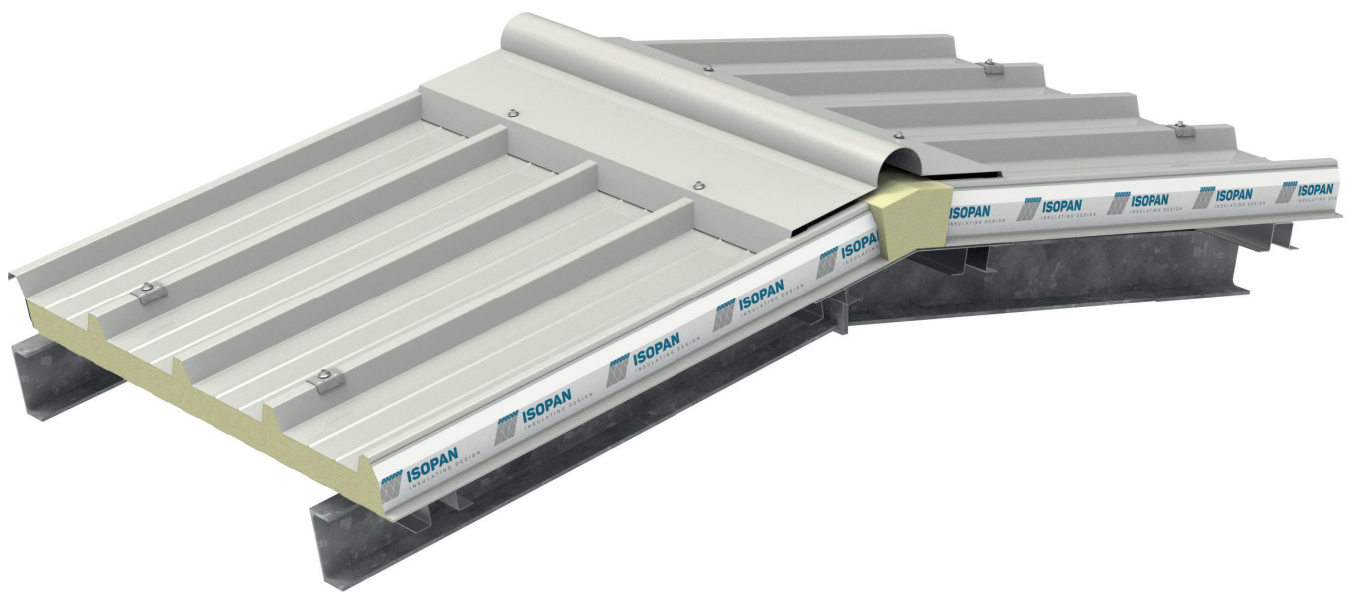


## Drawings Index

Code Drawings	Title	Page
RF01	RIDGE CONNECTION with single flashing	
RF02	RIDGE CONNECTION with double flashing	
RF03	OVERLAPPING SYSTEM - Cross section	
RF04	OVERLAPPING SYSTEM - Front view	
RF05	WALL & ROOF CONNECTION - Ridge	
RF06	ONE-SLOPE ROOF and wall connection	
RF07	WALL - ROOF EDGE CONNECTION - Type1	
RF08	WALL - ROOF EDGE CONNECTION - Type2	
RF09	INSULATED GUTTER between 2-slopes roof	
RF10	EAVES CONNECTION with Insulated gutter	
RF11	ENDWALL CONNECTION - Edge	
RF12	ENDWALL CONNECTION - Ridge	
RF13	ENDWALL CONNECTION - Concrete wall	
RF14	SLOPE STARTING from lower wall connection	
RF15	CONNECTION BETWEEN 2 Slopes	
RF16	OUTLET for Chimney or outgoing elements	

RF01

## RIDGE CONNECTION with single flashing



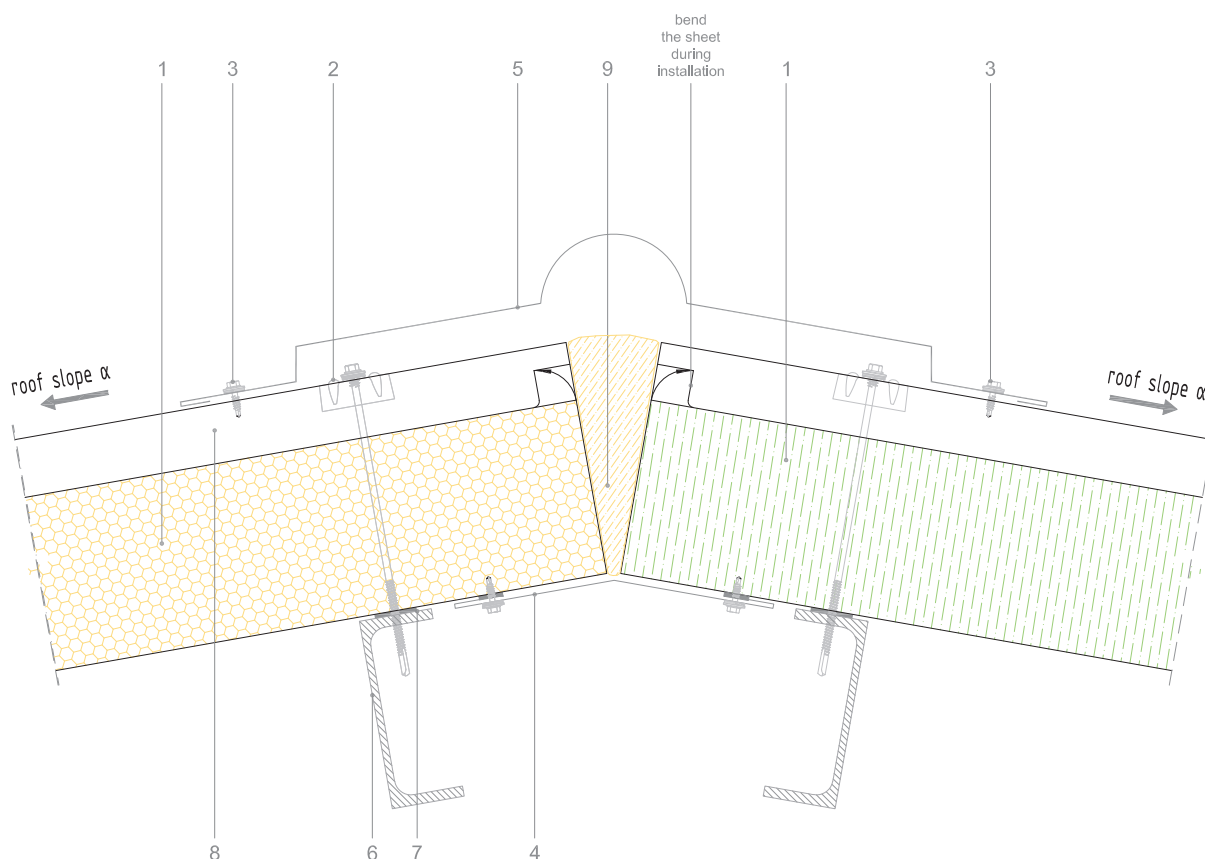
RF01

**ISOPAN**BUILDING ENVELOPE SOLUTIONS  
by Manni Group

# RIDGE CONNECTION with single flashing



You can download the .dwg and .pdf files collection at [isopan.com](http://isopan.com).



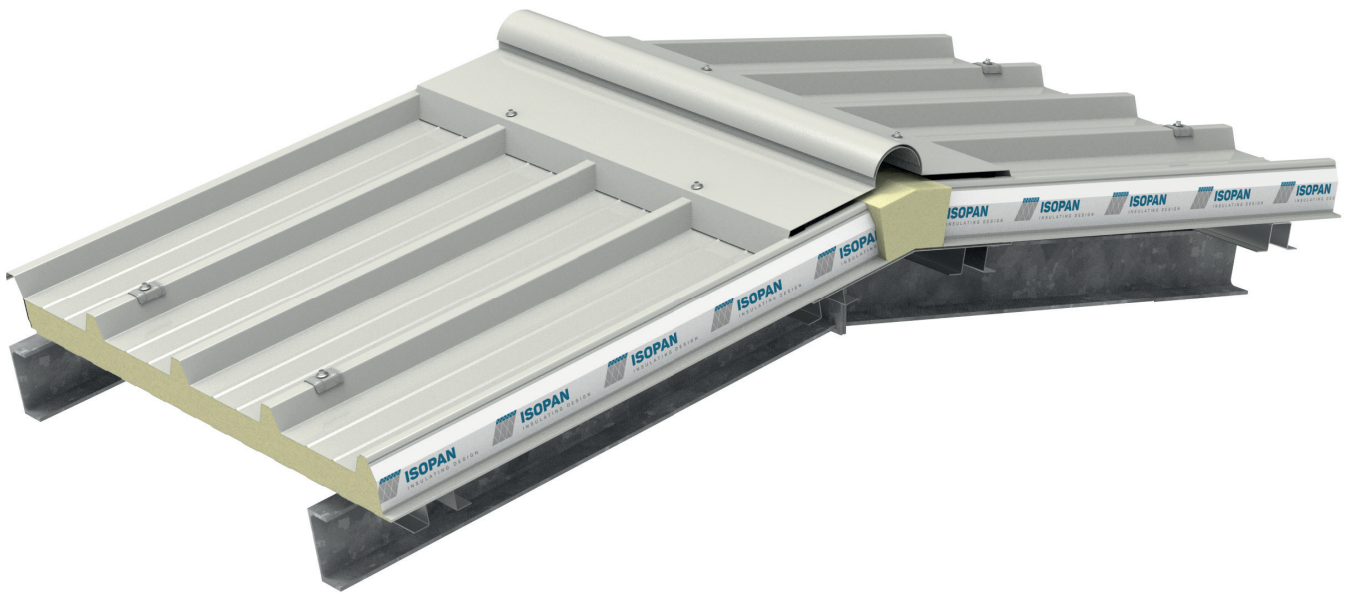
## LEGEND

1. Isopan roof sandwich panel
2. Isopan fixing sistem with metal cap and screw
3. Screw for sheet fixing
4. Internal pre-painted steel flashing
5. External pre-painted steel flashing - ridge sheet
6. Primary structure
7. Gasket
8. Giuntoplast Gasket
9. On-site insulating material

ATTENTION: the proposed solution does not constitute the project, and must be firstly assessed and evaluated by the designer and construction supervision. The designer is responsible for assessing the need to insert additional gasket and/or closing elements, even when not indicated in the drawing details. The property rights of this document belong to ISOPAN S.p.a. The contents can't be reproduced without prior written permission by the author. To choose the type of fastening, please refer to the screw type choice sheet; To choose the screw length, please refer to the data sheet for the correct screw length).

RF02

## RIDGE CONNECTION with double flashing

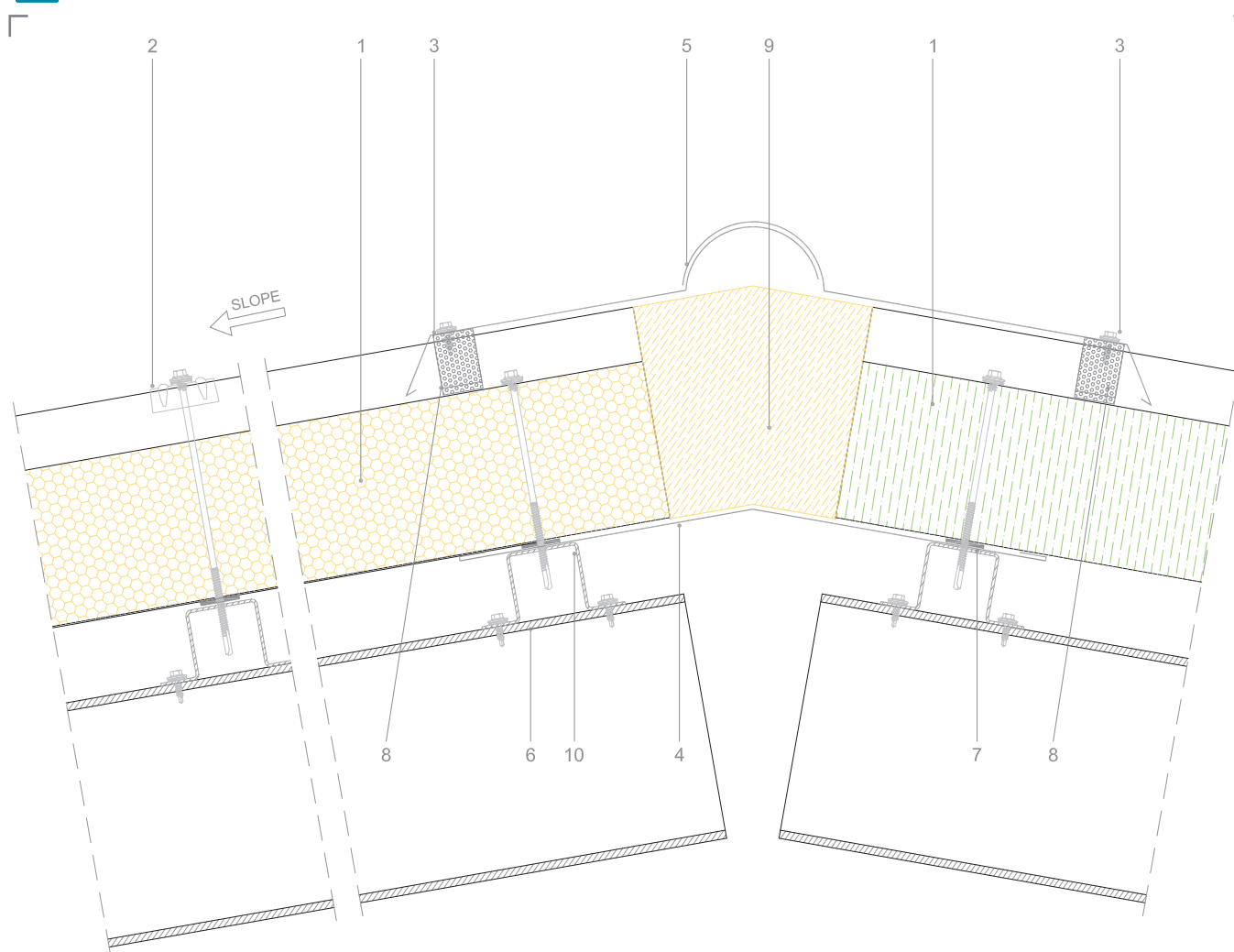


RF02

# RIDGE CONNECTION with double flashing



You can download the .dwg and .pdf files collection at [isopan.com](http://isopan.com).



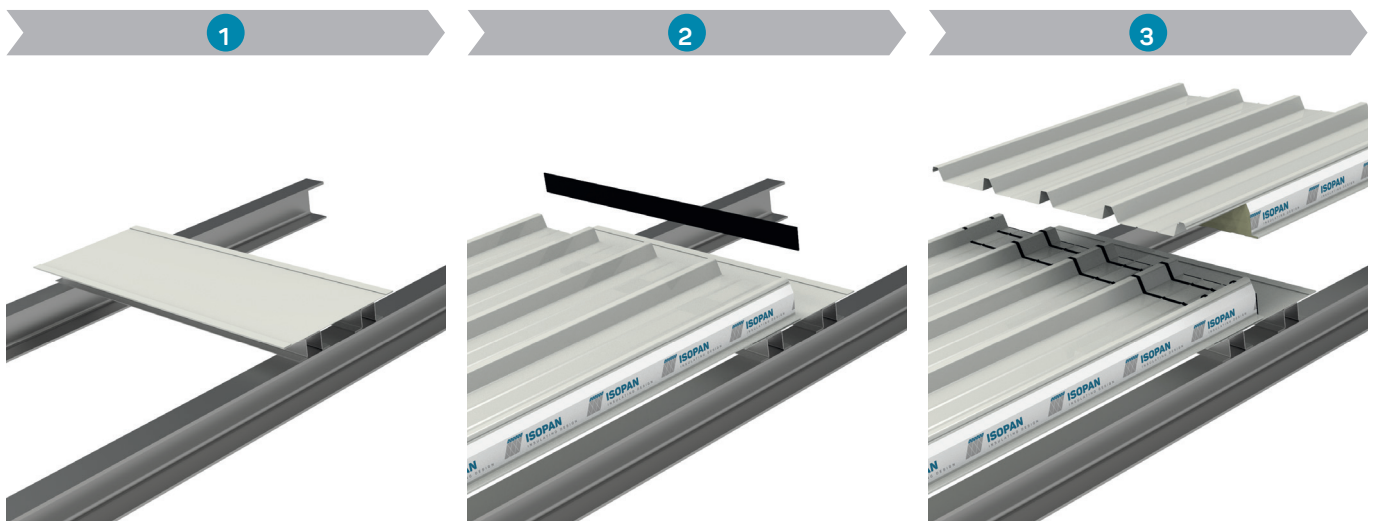
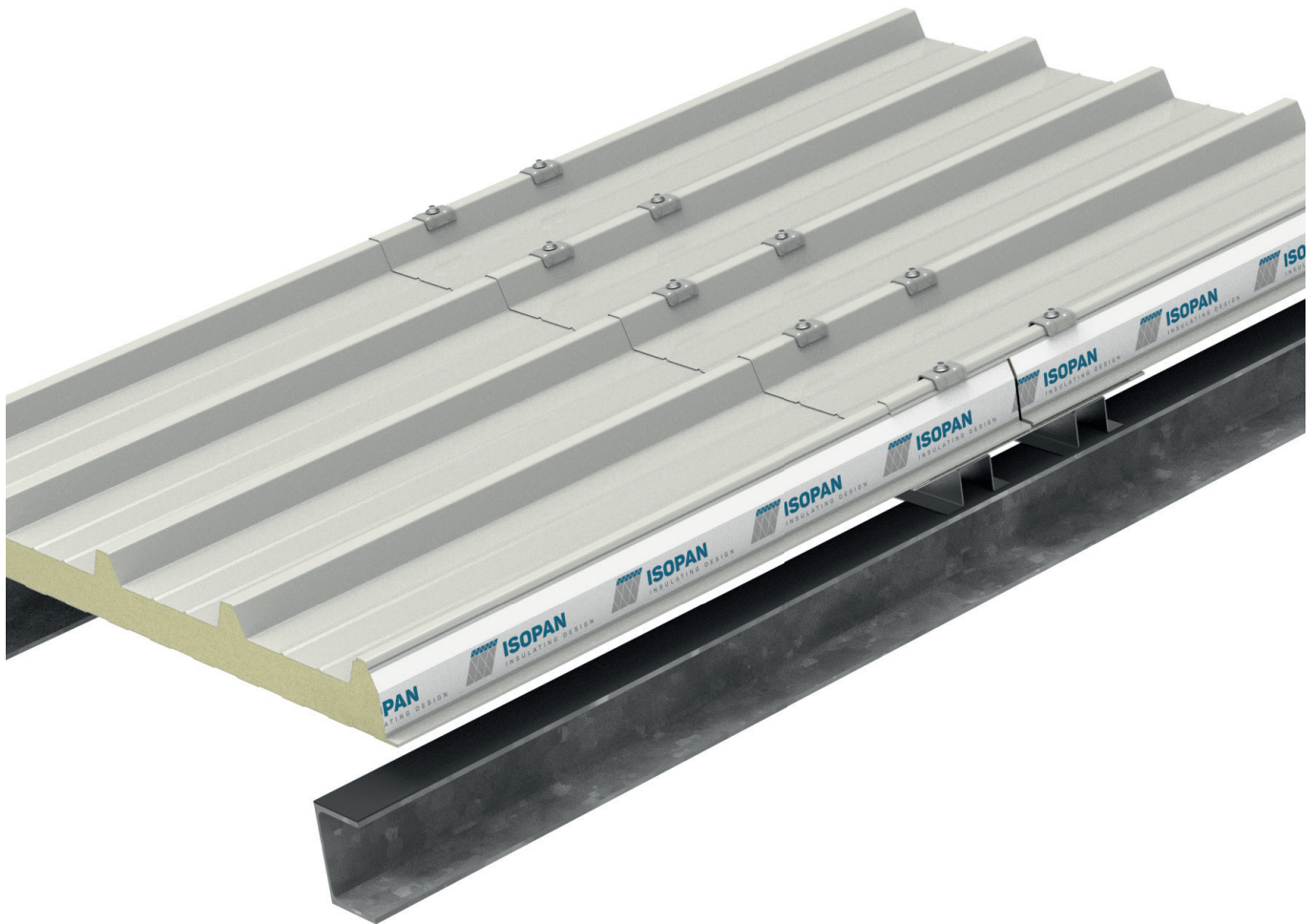
## LEGEND

1. Isopan roof sandwich panel
2. Isopan fixing sistem with metal cap and screw
3. Screw for sheet fixing
4. Internal prepainted steel flashing
5. External prepainted steel flashing - ridge sheet
6. Primary structure
7. Gasket
8. Giuntoplast Gasket
9. On-site insulating material
10. Secodary structure

ATTENTION: the proposed solution does not constitute the project, and must be firstly assessed and evaluated by the designer and construction supervision. The designer is responsible for assessing the need to insert additional gasket and/or closing elements, even when not indicated in the drawing details. The property rights of this document belong to ISOPAN S.p.a. The contents can't be reproduced without prior written permission by the author. To choose the type of fastening, please refer to the screw type choice sheet; To choose the screw length, please refer to the data sheet for the correct screw length).

RF03

## OVERLAPPING SYSTEM - Cross section

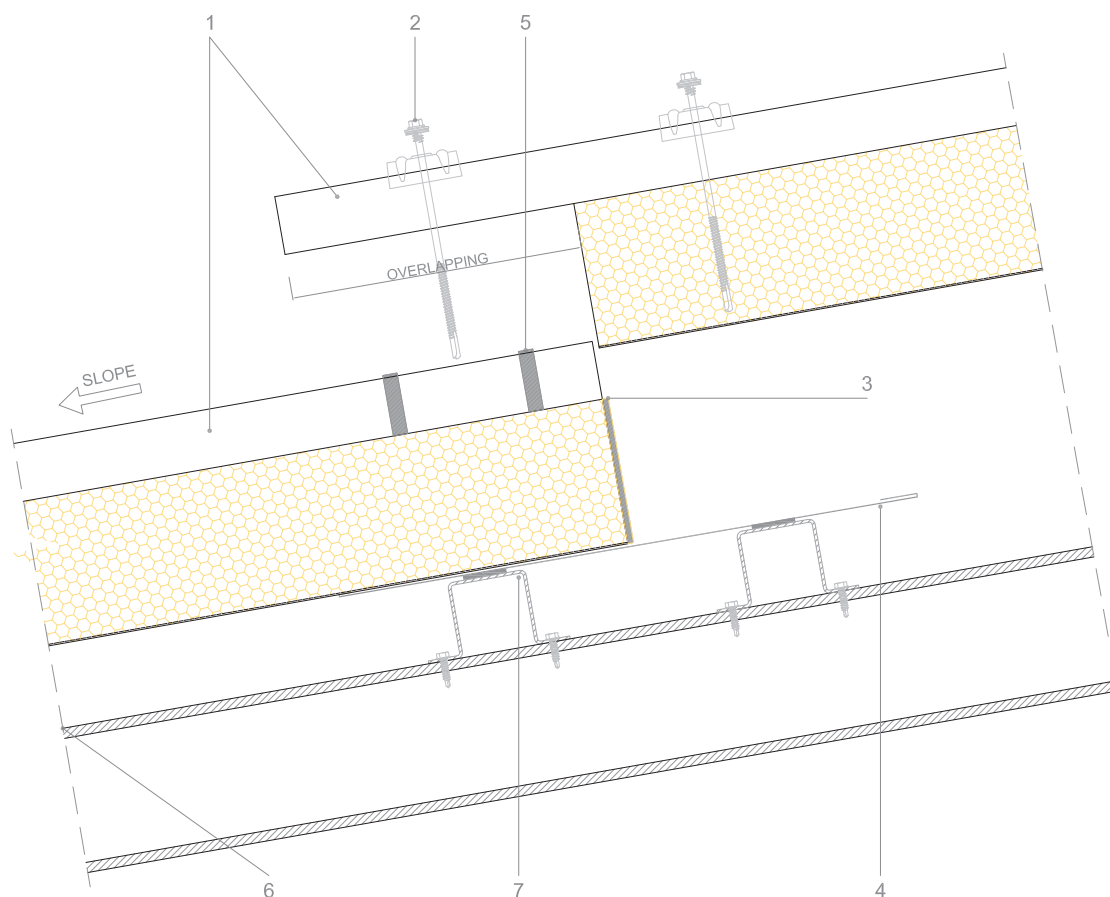


RF03

# OVERLAPPING SYSTEM - Cross section



You can download the .dwg and .pdf files collection at [isopan.com](http://isopan.com).

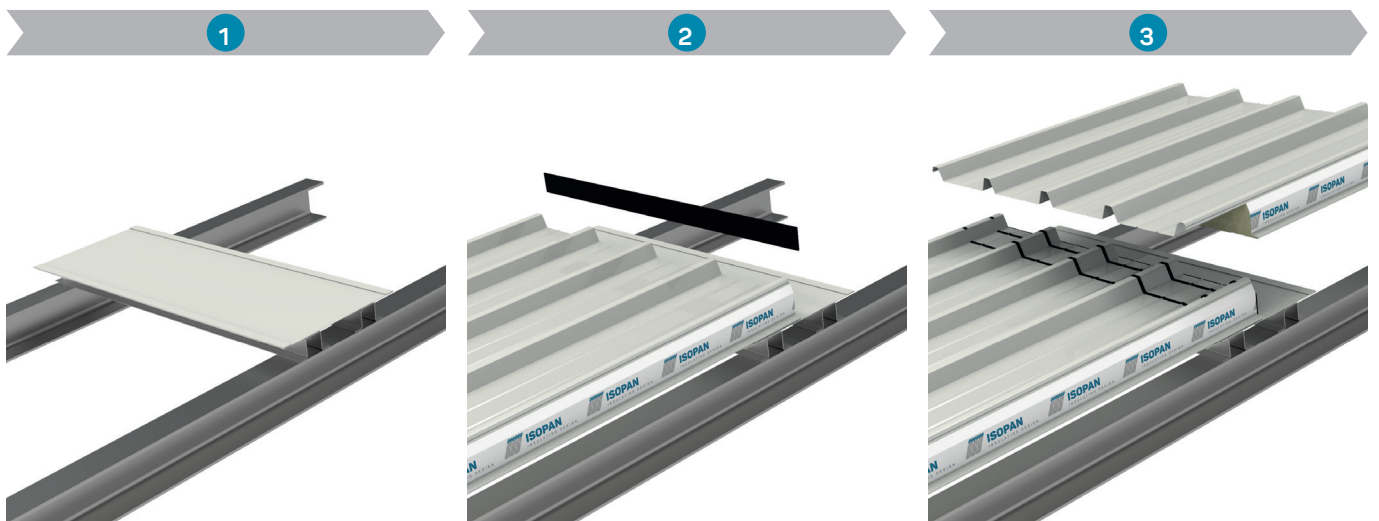
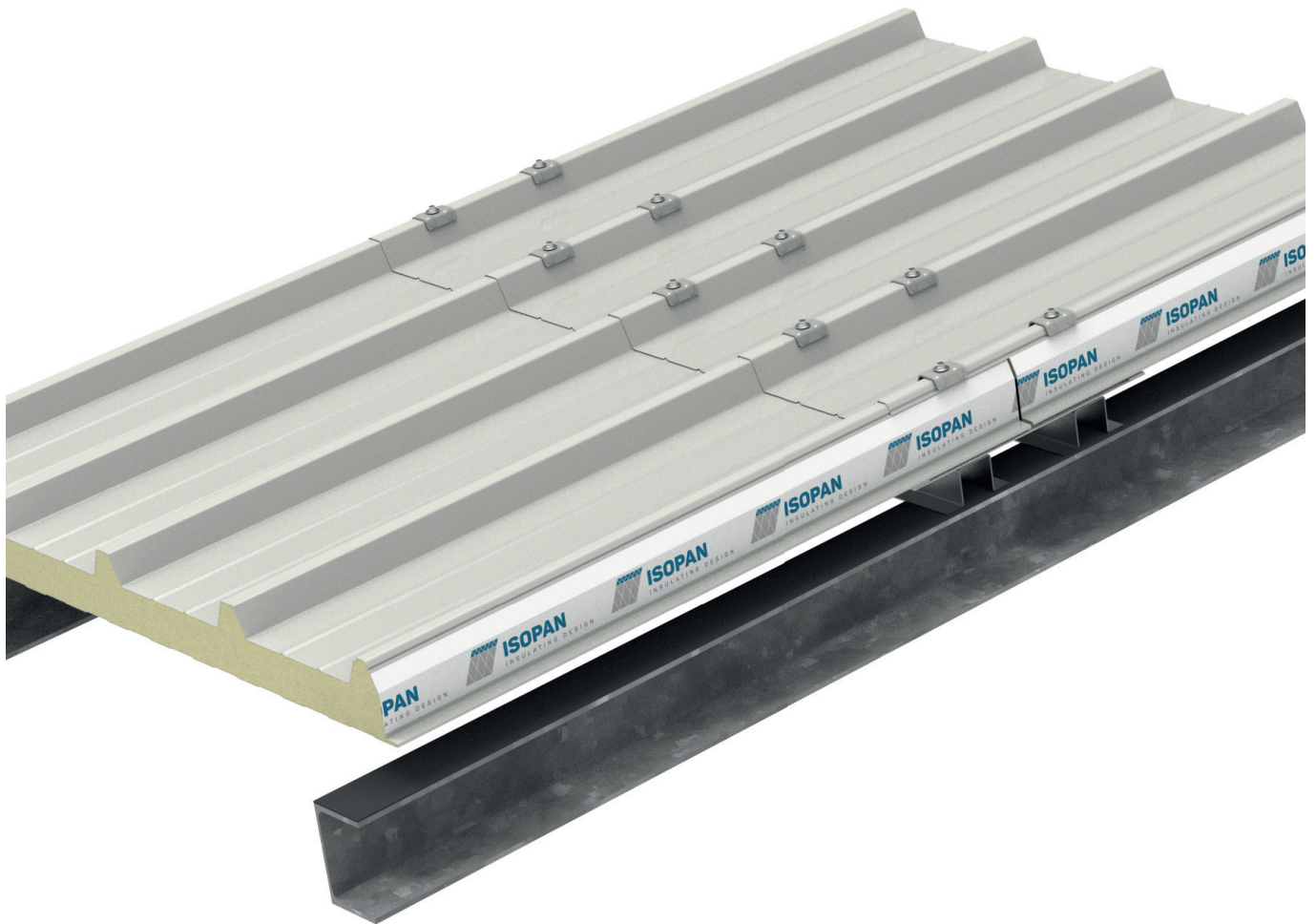


1. Isopan roof sandwich panel
2. Isopan fixing sistem with metal cap and screw
3. On-site gasket
4. Internal prepainted steel flashing
5. On-site sealant or adhesive gasket
6. Primary structure
7. Secodary structure

ATTENTION: the proposed solution does not constitute the project, and must be firstly assessed and evaluated by the designer and construction supervision. The designer is responsible for assessing the need to insert additional gasket and/or closing elements, even when not indicated in the drawing details. The property rights of this document belong to ISOPAN S.p.a. The contents can't be reproduced without prior written permission by the author. To choose the type of fastening, please refer to the screw type choice sheet; To choose the screw length, please refer to the data sheet for the correct screw length).

RF04

## OVERLAPPING SYSTEM - Front view



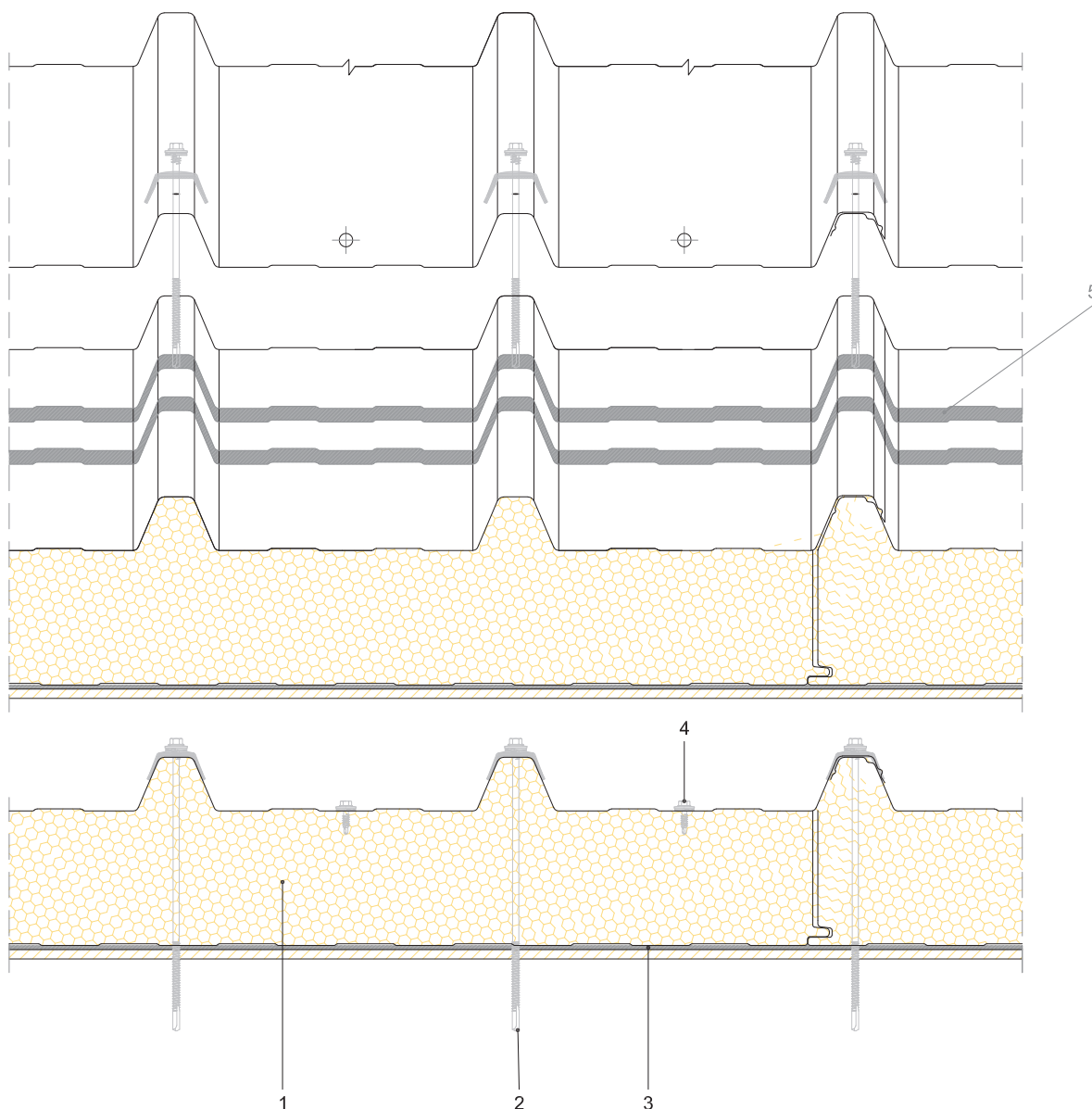
RF04

**ISOPAN**BUILDING ENVELOPE SOLUTIONS  
by Manni Group

# OVERLAPPING SYSTEM - Front view



You can download the .dwg and .pdf files collection at [isopan.com](http://isopan.com).



## LEGEND

1. Isopan roof sandwich panel
2. Isopan fixing sistem with metal cap and screw
3. On-site gasket
4. Stitching screw
5. On-site sealant or adhesive gasket
6. Secodary structure

ATTENTION: the proposed solution does not constitute the project, and must be firstly assessed and evaluated by the designer and construction supervision. The designer is responsible for assessing the need to insert additional gasket and/or closing elements, even when not indicated in the drawing details. The property rights of this document belong to ISOPAN S.p.a. The contents can't be reproduced without prior written permission by the author. To choose the type of fastening, please refer to the screw type choice sheet; To choose the screw length, please refer to the data sheet for the correct screw length).

RF05

## WALL & ROOF CONNECTION - Ridge

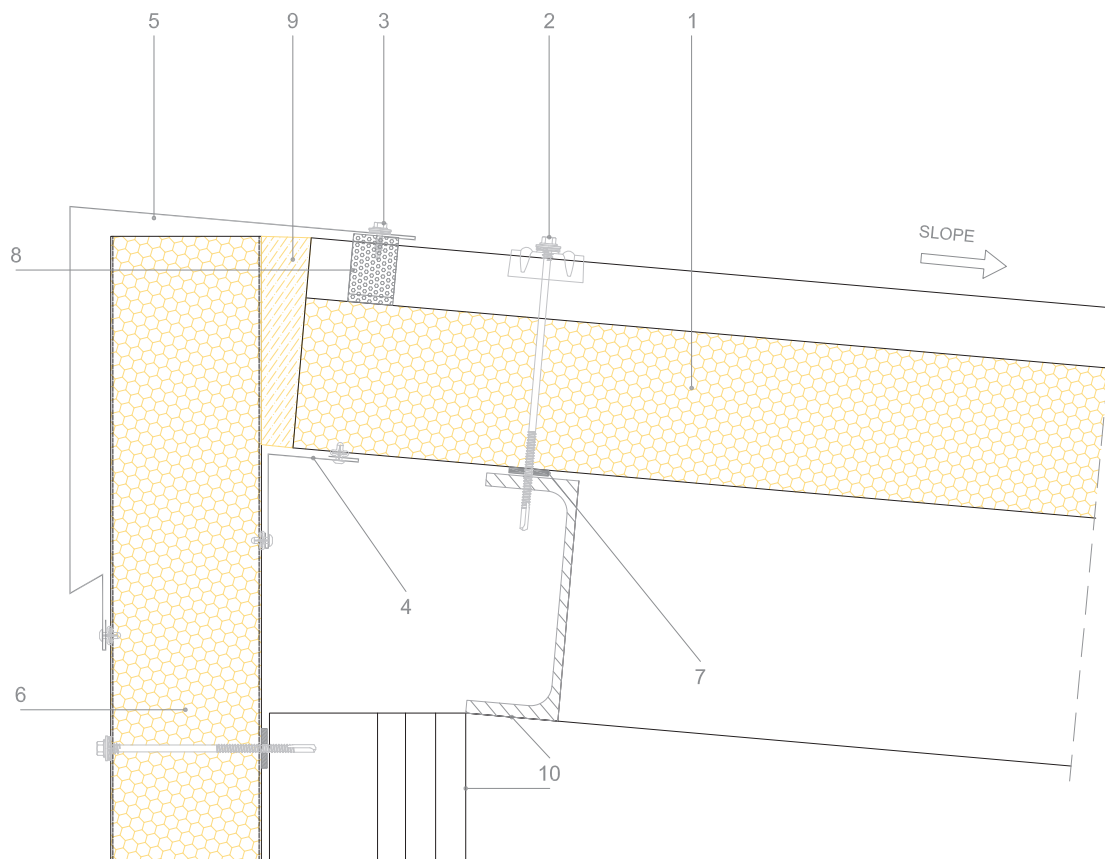


RF05

# WALL & ROOF CONNECTION - Ridge



You can download the .dwg and .pdf files collection at [isopan.com](http://isopan.com).



## LEGEND

1. Isopan roof sandwich panel
2. Isopan fixing sistem with metal cap and screw
3. Screw for sheet fixing
4. Internal prepainted steel flashing
5. External prepainted steel flashing - ridge sheet
6. Isopan wall sandwich panel
7. Gasket
8. Giuntoplast Gasket
9. On-site insulating material
10. Secodary structure

ATTENTION: the proposed solution does not constitute the project, and must be firstly assessed and evaluated by the designer and construction supervision. The designer is responsible for assessing the need to insert additional gasket and/or closing elements, even when not indicated in the drawing details. The property rights of this document belong to ISOPAN S.p.a. The contents can't be reproduced without prior written permission by the author. To choose the type of fastening, please refer to the screw type choice sheet; To choose the screw length, please refer to the data sheet for the correct screw length).

RF06

# ONE-SLOPE ROOF and wall connection

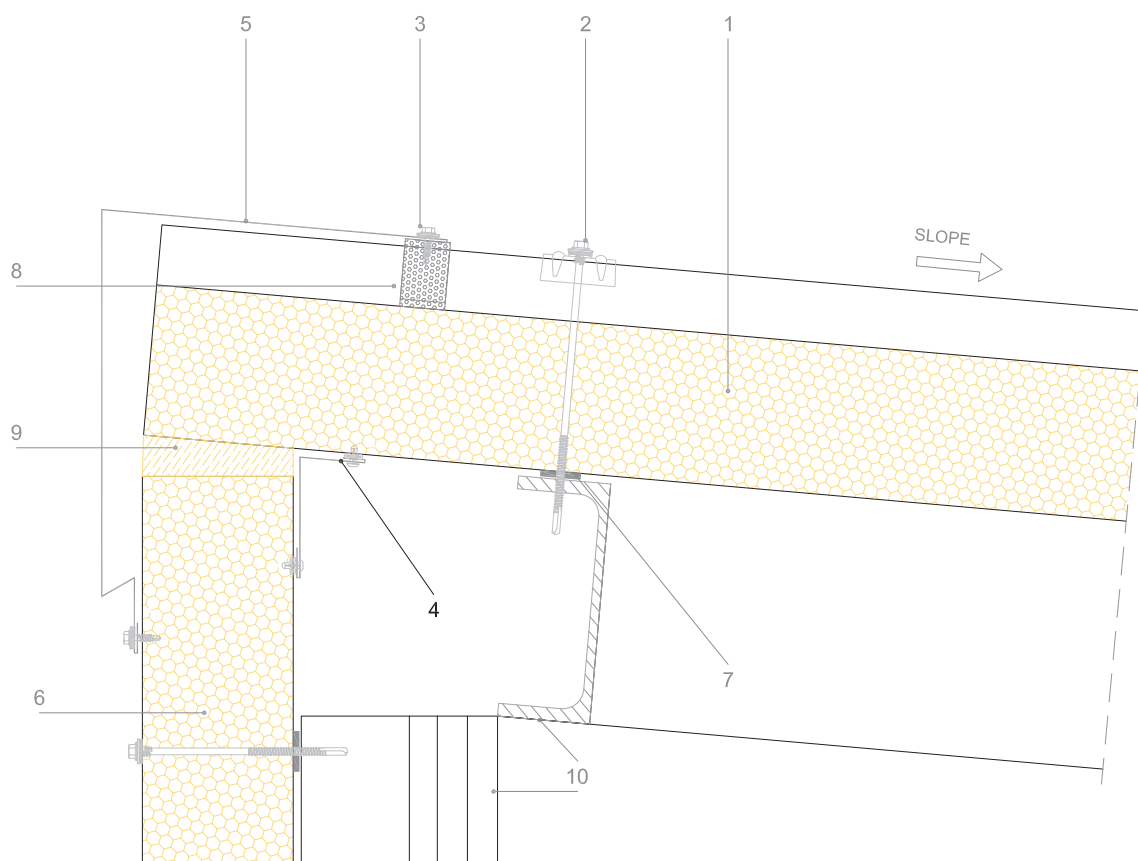


RF06

# ONE-SLOPE ROOF and wall connection



You can download the .dwg and .pdf files collection at [isopan.com](http://isopan.com).



## LEGEND

1. Isopan roof sandwich panel
2. Isopan fixing sistem with metal cap and screw
3. Screw for sheet fixing
4. Internal pre-painted steel flashing
5. External pre-painted steel flashing - ridge sheet
6. Isopan wall sandwich panel
7. Gasket
8. Giuntoplast Gasket
9. On-site insulating material
10. Secodary structure

ATTENTION: the proposed solution does not constitute the project, and must be firstly assessed and evaluated by the designer and construction supervision. The designer is responsible for assessing the need to insert additional gasket and/or closing elements, even when not indicated in the drawing details. The property rights of this document belong to ISOPAN S.p.a. The contents can't be reproduced without prior written permission by the author. To choose the type of fastening, please refer to the screw type choice sheet; To choose the screw length, please refer to the data sheet for the correct screw length).

RF07

## WALL - ROOF EDGE CONNECTION - Type1

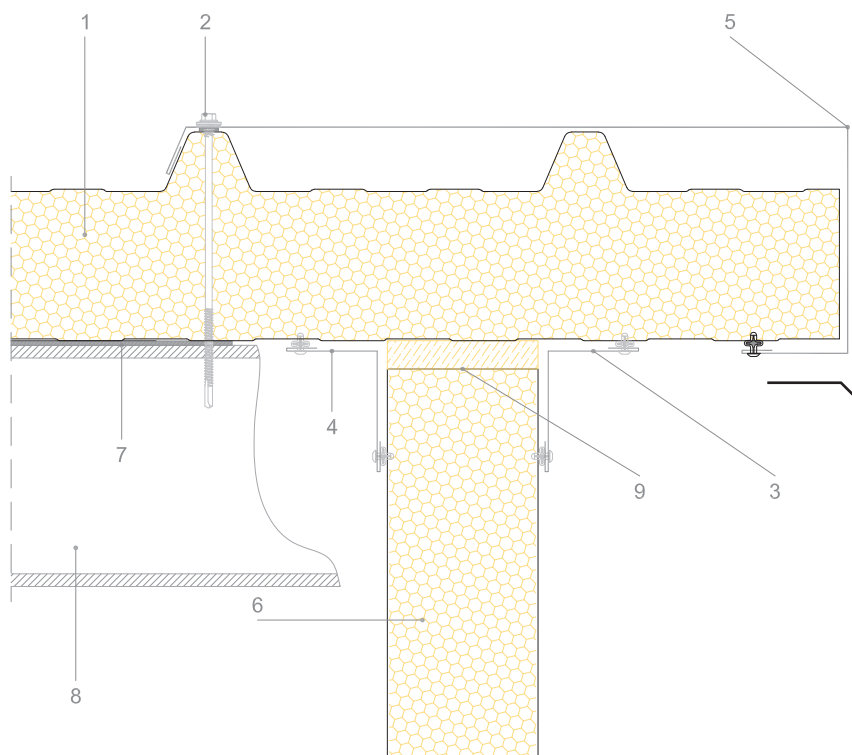


RF07

# WALL - ROOF EDGE CONNECTION - Type1



You can download the .dwg and .pdf files collection at [isopan.com](http://isopan.com).



## LEGEND

1. Isopan roof sandwich panel
2. Isopan fixing screw
3. External pre-painted steel flashing
4. Internal pre-painted steel flashing
5. External pre-painted steel flashing - Edge flashing
6. Isopan wall sandwich panel
7. Gasket
8. Secondary structure
9. On-site insulating material

ATTENTION: the proposed solution does not constitute the project, and must be firstly assessed and evaluated by the designer and construction supervision. The designer is responsible for assessing the need to insert additional gasket and/or closing elements, even when not indicated in the drawing details. The property rights of this document belong to ISOPAN S.p.a. The contents can't be reproduced without prior written permission by the author. To choose the type of fastening, please refer to the screw type choice sheet; To choose the screw length, please refer to the data sheet for the correct screw length).

RF08

## WALL - ROOF EDGE CONNECTION - Type2

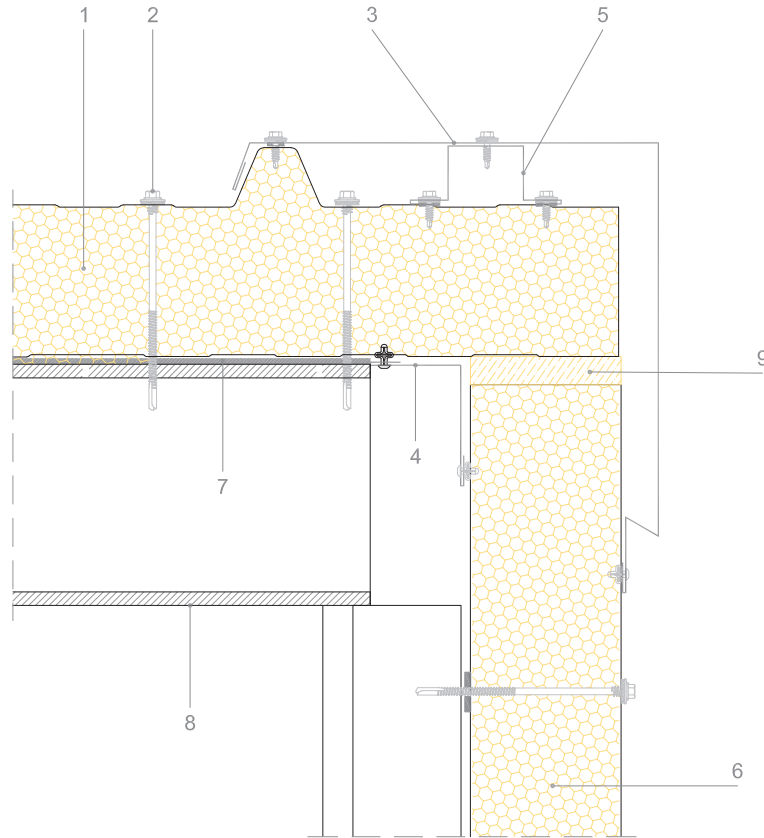


RF08

# WALL - ROOF EDGE CONNECTION - Type2



You can download the .dwg and .pdf files collection at [isopan.com](http://isopan.com).



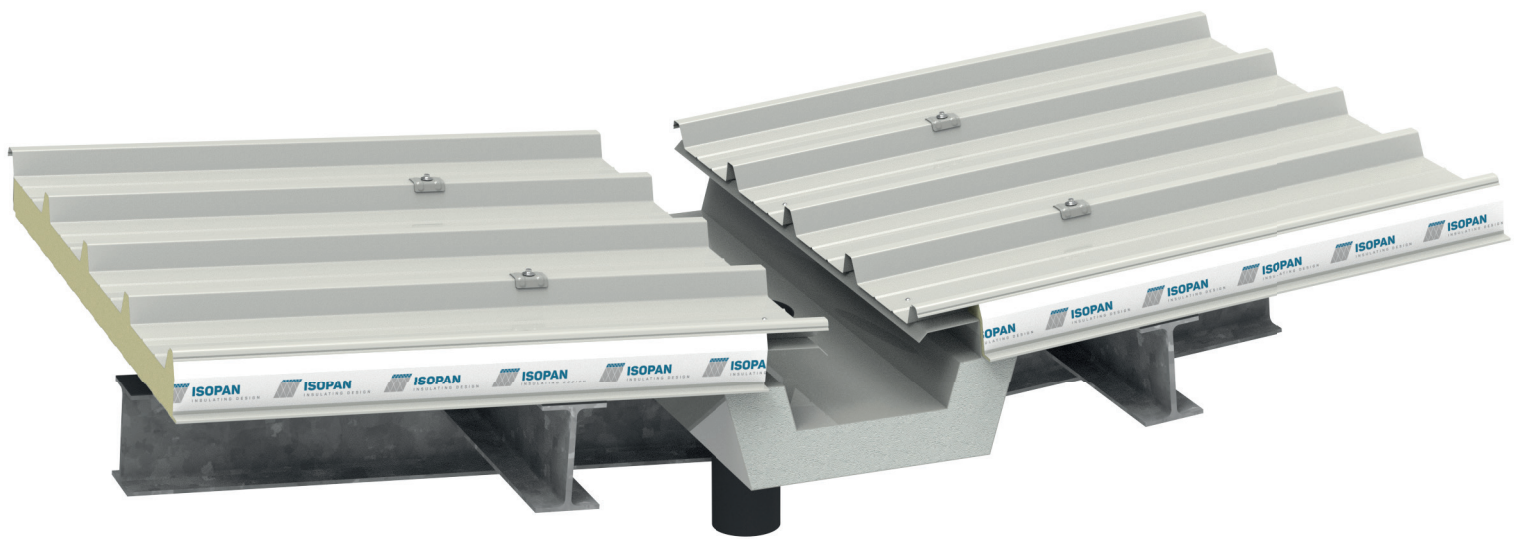
## LEGEND

1. Isopan roof sandwich panel
2. Isopan fixing screw
3. External prepainted steel flashing - Edge flashing
4. Internal prepainted steel flashing
5. Flashing for fixing
6. Isopan wall sandwich panel
7. Gasket
8. Secondary structure
9. On-site insulating material

ATTENTION: the proposed solution does not constitute the project, and must be firstly assessed and evaluated by the designer and construction supervision. The designer is responsible for assessing the need to insert additional gasket and/or closing elements, even when not indicated in the drawing details. The property rights of this document belong to ISOPAN S.p.a. The contents can't be reproduced without prior written permission by the author. To choose the type of fastening, please refer to the screw type choice sheet; To choose the screw length, please refer to the data sheet for the correct screw length).

RF09

## INSULATED GUTTER between 2-slopes roof



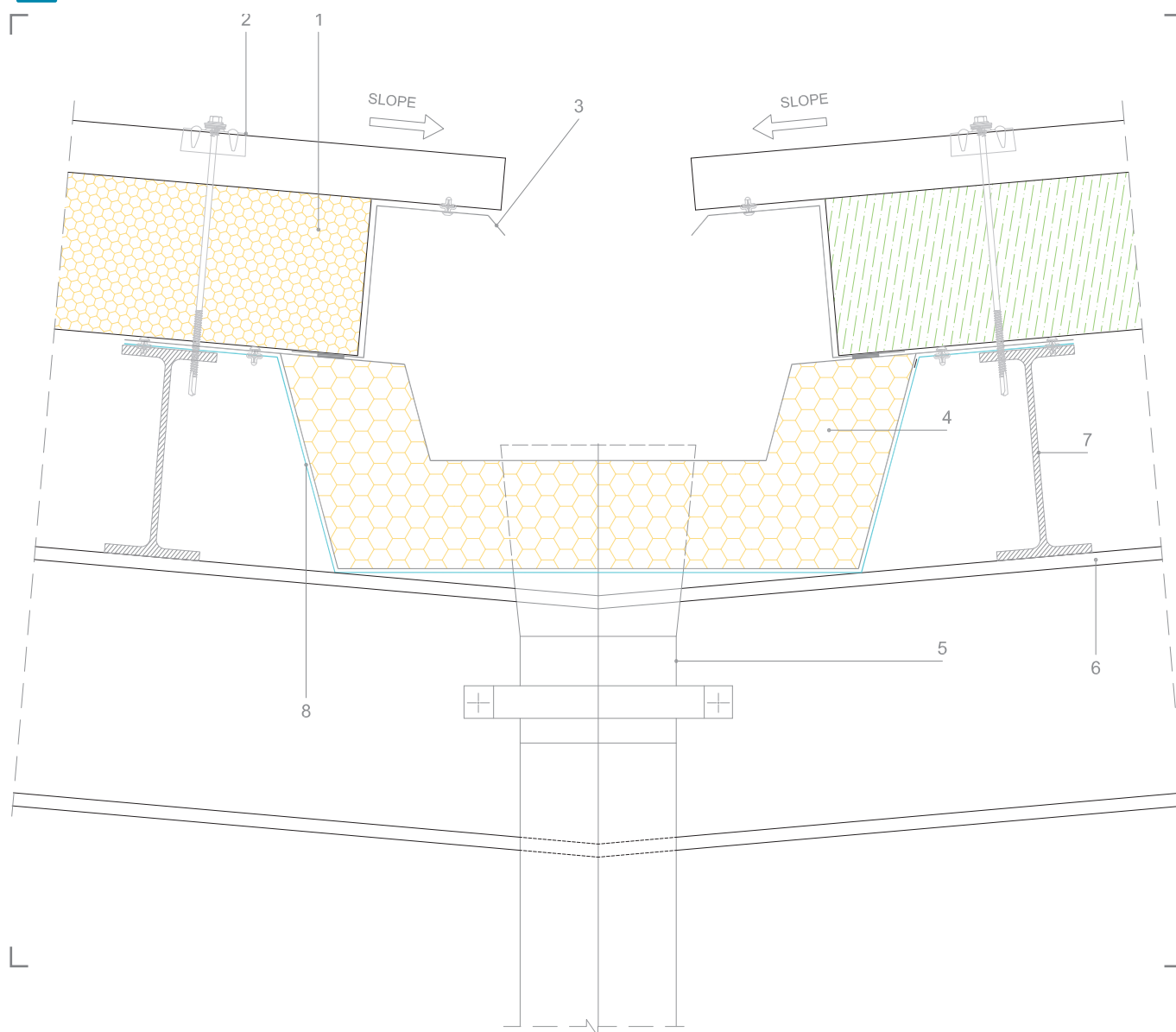
RF09

**ISOPAN**BUILDING ENVELOPE SOLUTIONS  
by Manni Group

# INSULATED GUTTER between 2-slopes roof



You can download the .dwg and .pdf files collection at [isopan.com](http://isopan.com).



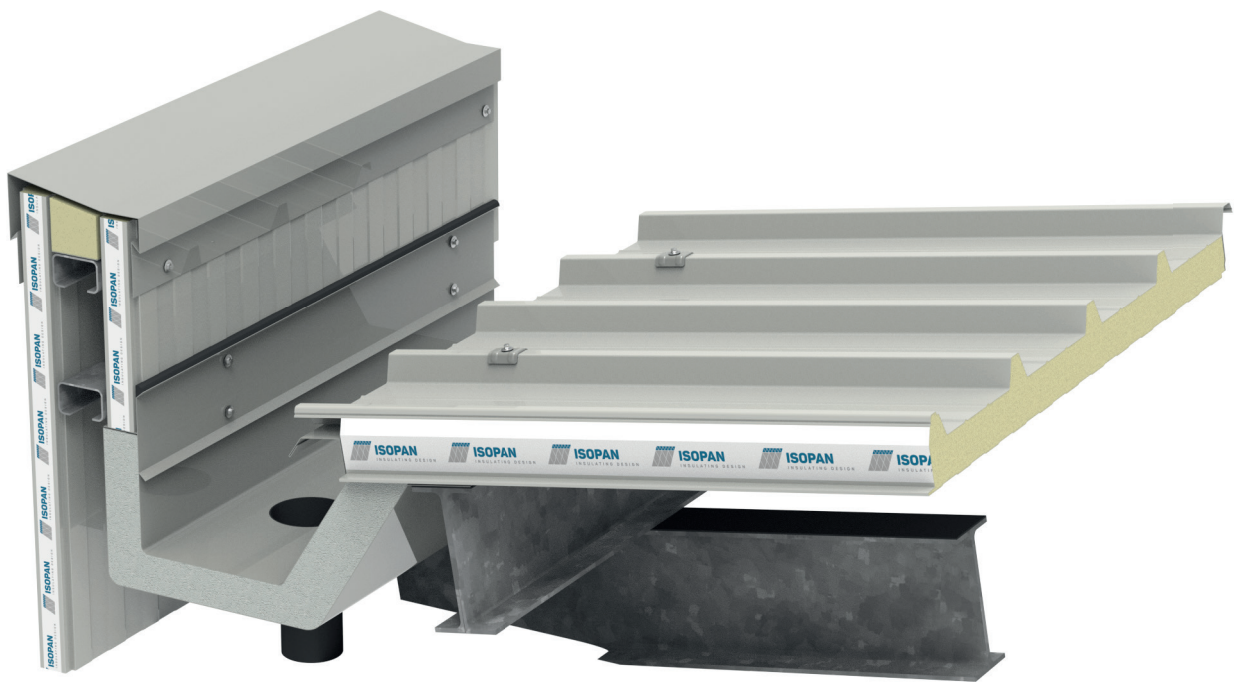
## LEGEND

1. Isopan roof sandwich panel
2. Isopan fixing sistem with metal cap and screw
3. Dripping flashing
4. Insulated gutter channel
5. Rain Downpipe
6. Primary structure
7. Secodary structure
8. Support for Insulated gutter

ATTENTION: the proposed solution does not constitute the project, and must be firstly assessed and evaluated by the designer and construction supervision. The designer is responsible for assessing the need to insert additional gasket and/or closing elements, even when not indicated in the drawing details. The property rights of this document belong to ISOPAN S.p.a.. The contents can't be reproduced without prior written permission by the author. To choose the type of fastening, please refer to the screw type choice sheet; To choose the screw length, please refer to the data sheet for the correct screw length).

RF10

## EAVES CONNECTION with Insulated gutter

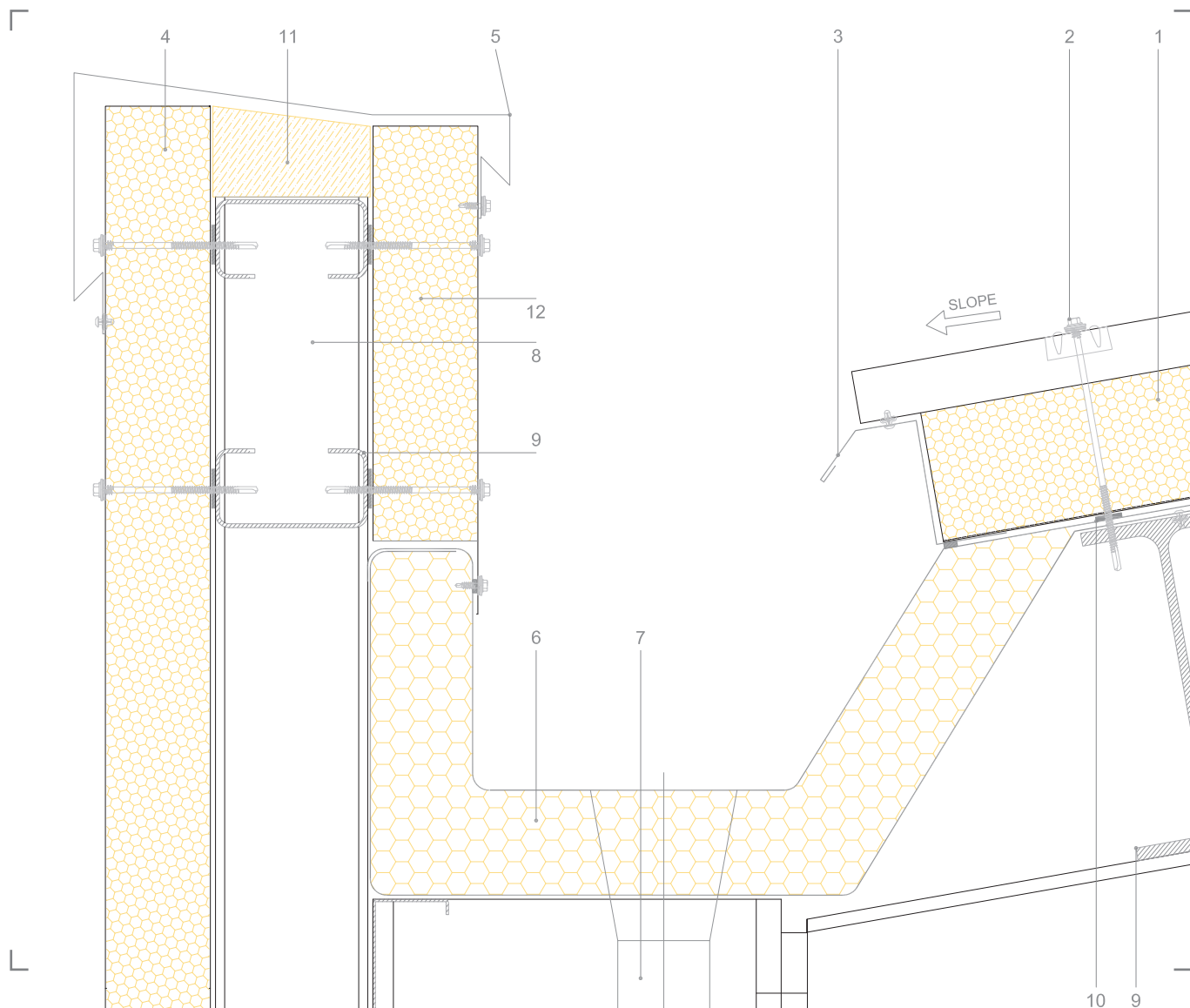


RF10

# EAVES CONNECTION with Insulated gutter



You can download the .dwg and .pdf files collection at [isopan.com](http://isopan.com).



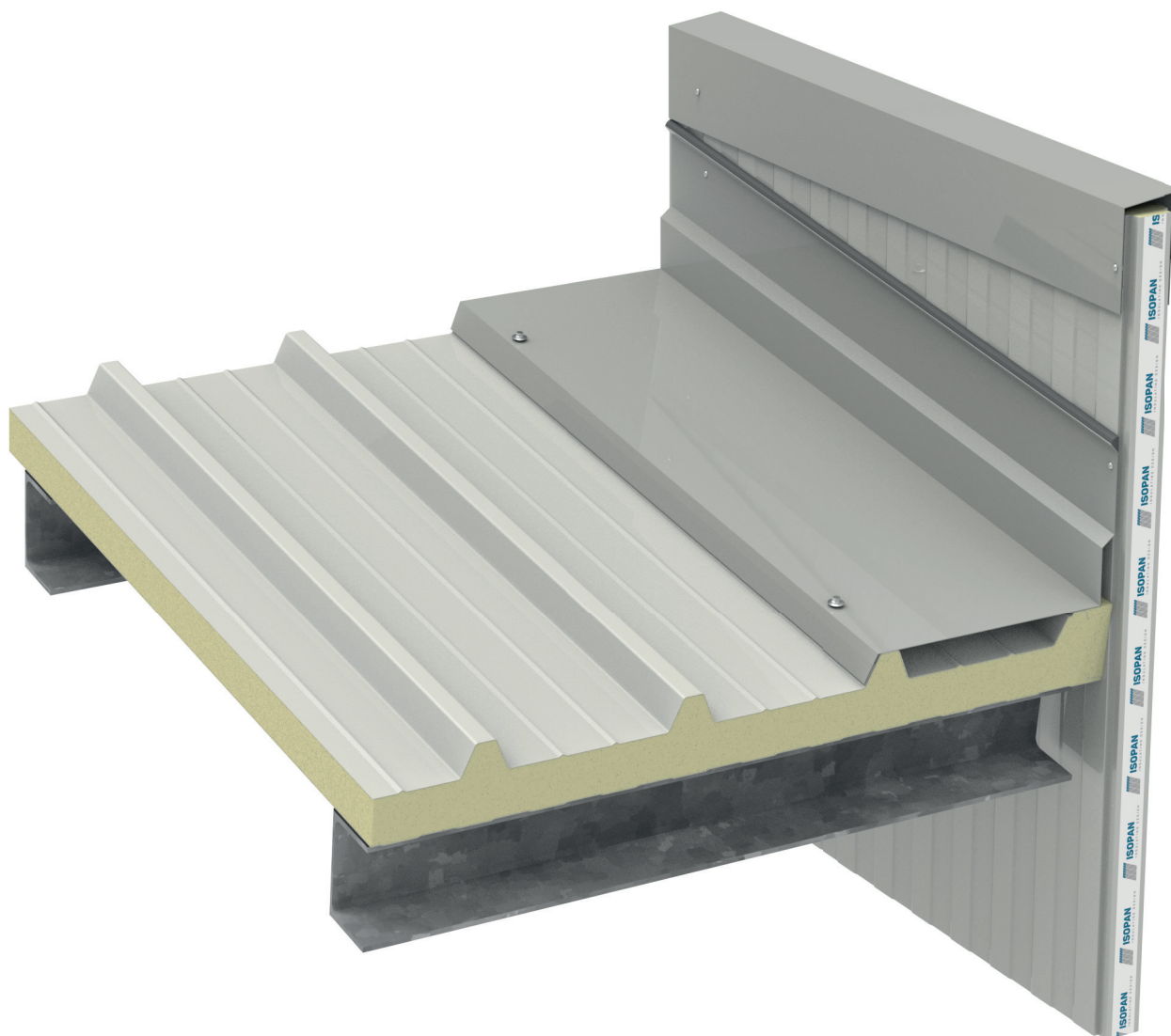
## LEGEND

1. Isopan roof sandwich panel
2. Isopan fixing sistem with metal cap and screw
3. Dripping flashing
4. Isopan wall sandwich panel
5. Upper wall Flashing
6. Insulated gutter channel
7. Rain downpipe
8. Primary structure
9. Secondary structure
10. On-site gasket
11. On-site insulating material
12. Isopan wall sandwich panel (to be cutted on-site)

ATTENTION: the proposed solution does not constitute the project, and must be firstly assessed and evaluated by the designer and construction supervision. The designer is responsible for assessing the need to insert additional gasket and/or closing elements, even when not indicated in the drawing details. The property rights of this document belong to ISOPAN S.p.a. The contents can't be reproduced without prior written permission by the author. To choose the type of fastening, please refer to the screw type choice sheet; To choose the screw length, please refer to the data sheet for the correct screw length).

RF11

## ENDWALL CONNECTION - Edge



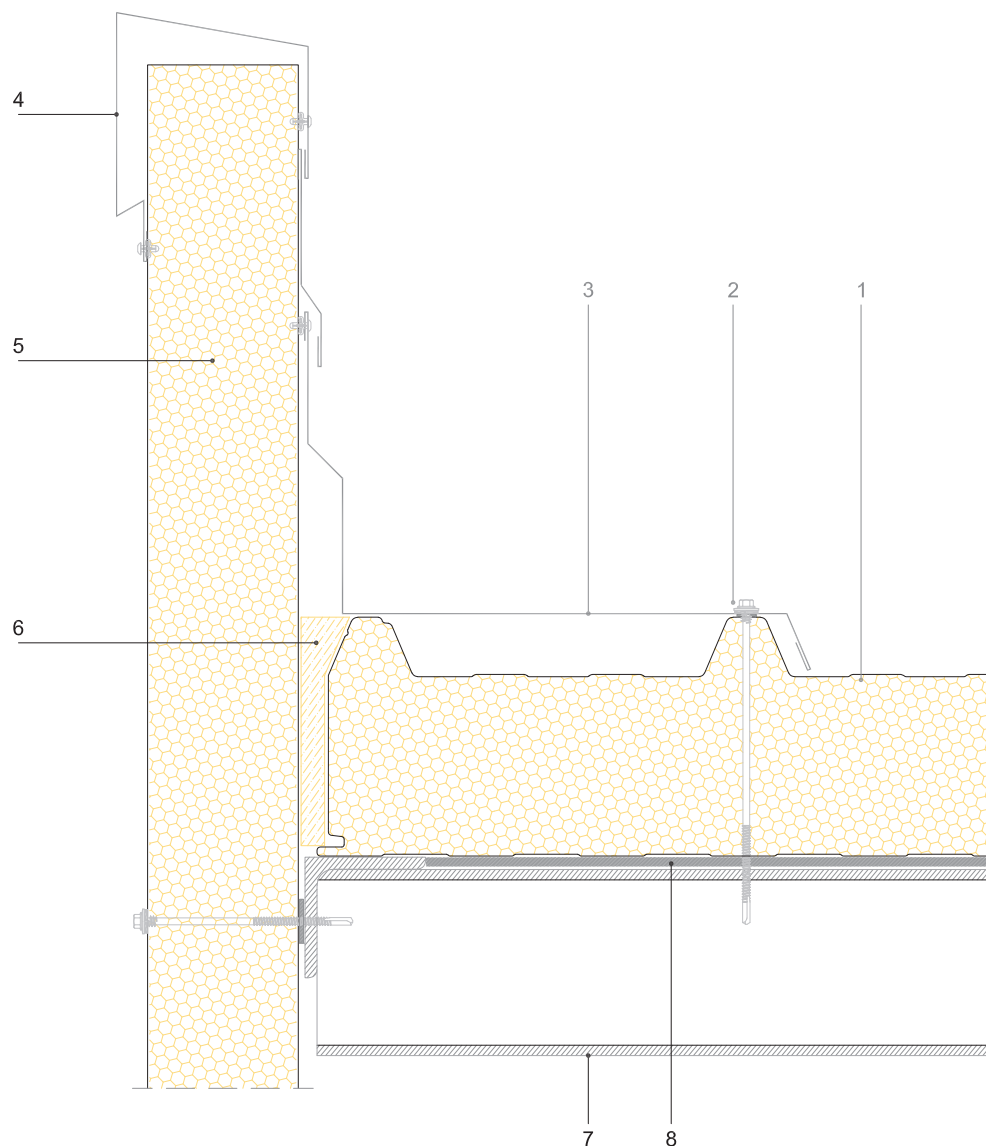
RF11

**ISOPAN**BUILDING ENVELOPE SOLUTIONS  
by Manni Group

# ENDWALL CONNECTION - Edge



You can download the .dwg and .pdf files collection at [isopan.com](http://isopan.com).



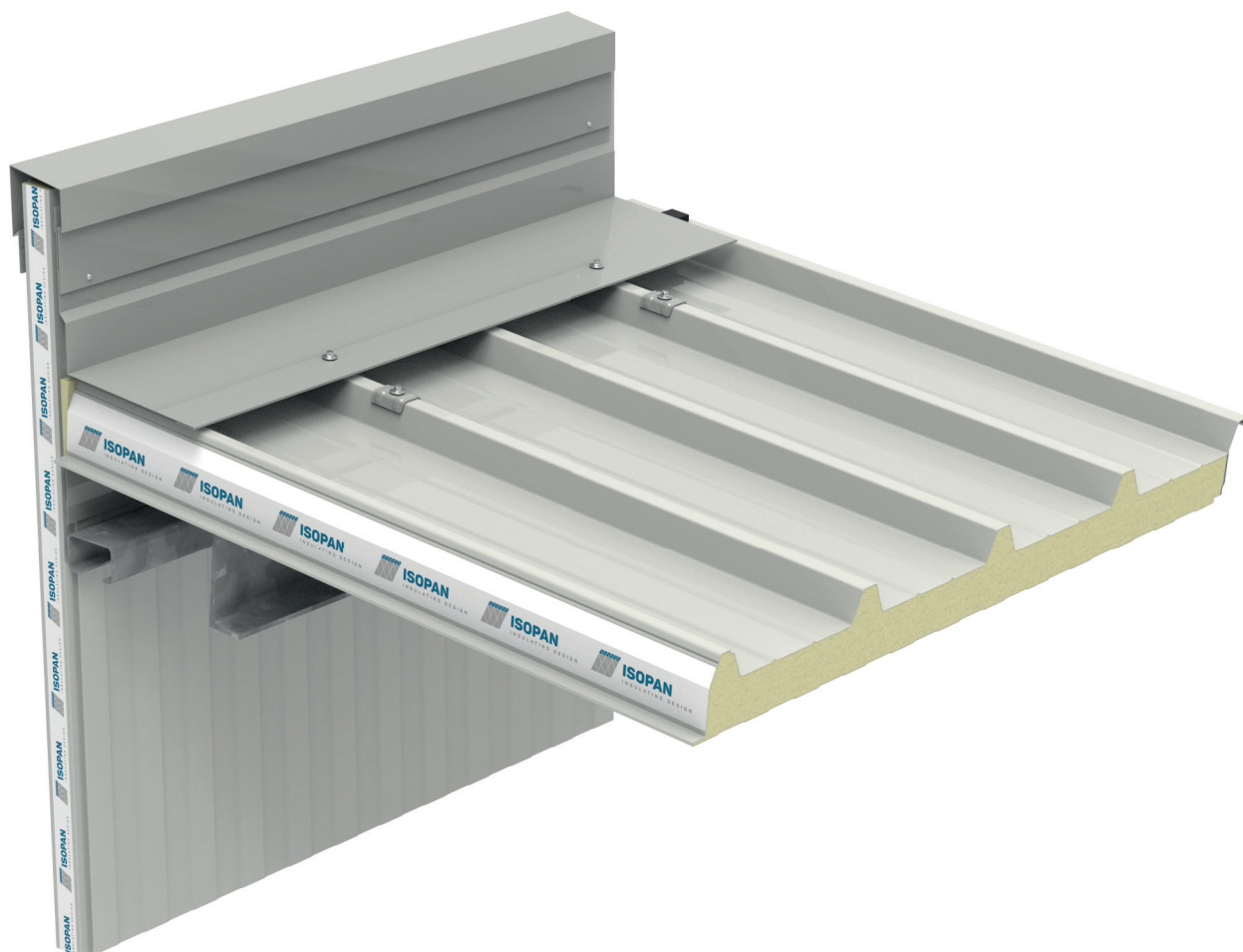
## LEGEND

1. Isopan roof sandwich panel
2. Fixing screw
3. Lateral closure flashing
4. Upper closure flashing
5. Isopan wall sandwich panel
6. On-site insulating material
7. Secondary structure
8. On-site gasket

ATTENTION: the proposed solution does not constitute the project, and must be firstly assessed and evaluated by the designer and construction supervision. The designer is responsible for assessing the need to insert additional gasket and/or closing elements, even when not indicated in the drawing details. The property rights of this document belong to ISOPAN S.p.a. The contents can't be reproduced without prior written permission by the author. To choose the type of fastening, please refer to the screw type choice sheet; To choose the screw length, please refer to the data sheet for the correct screw length).

RF12

## ENDWALL CONNECTION - Ridge



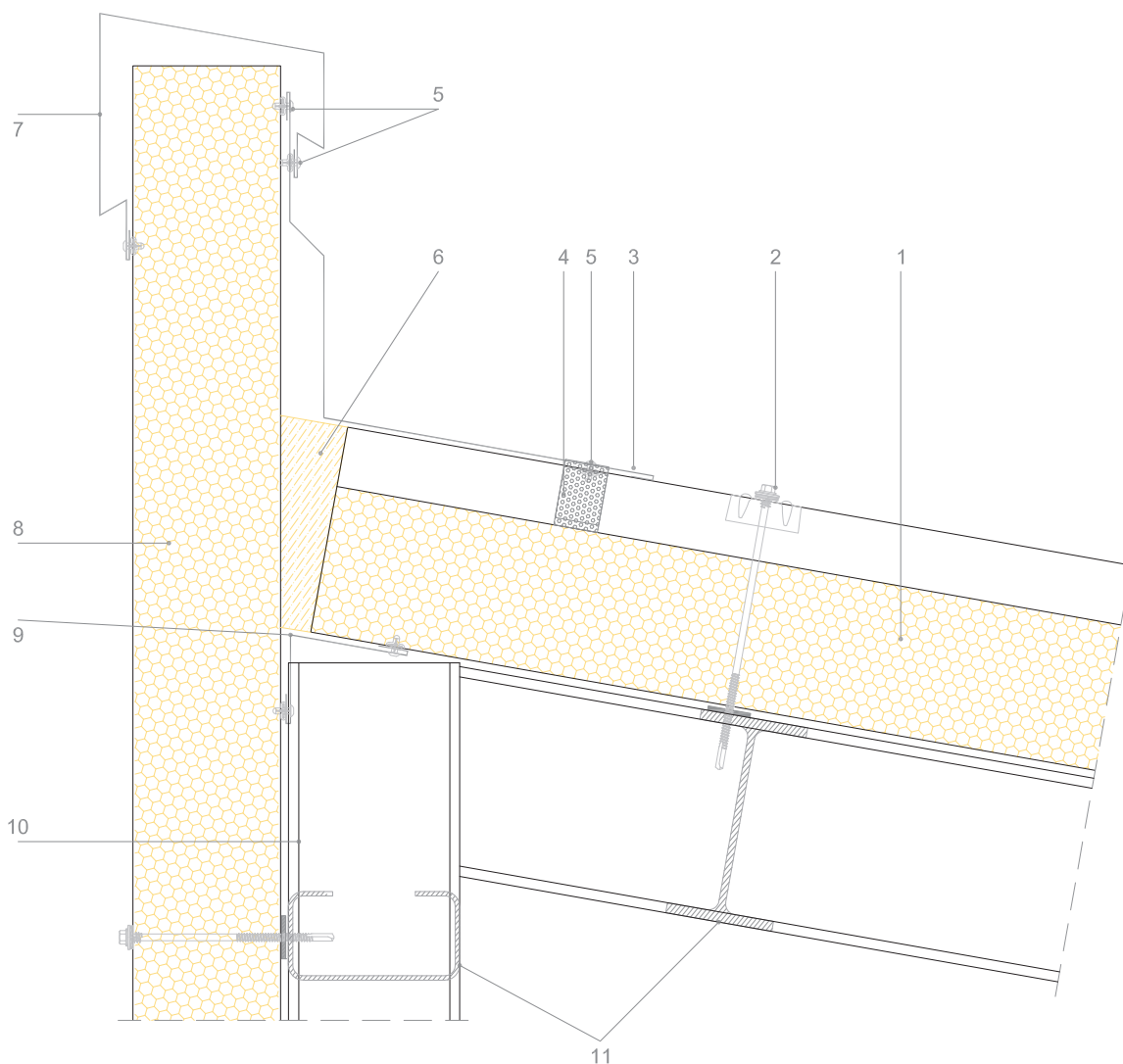
RF12

**ISOPAN**BUILDING ENVELOPE SOLUTIONS  
by Manni Group

# ENDWALL CONNECTION - Ridge



You can download the .dwg and .pdf files collection at [isopan.com](http://isopan.com).



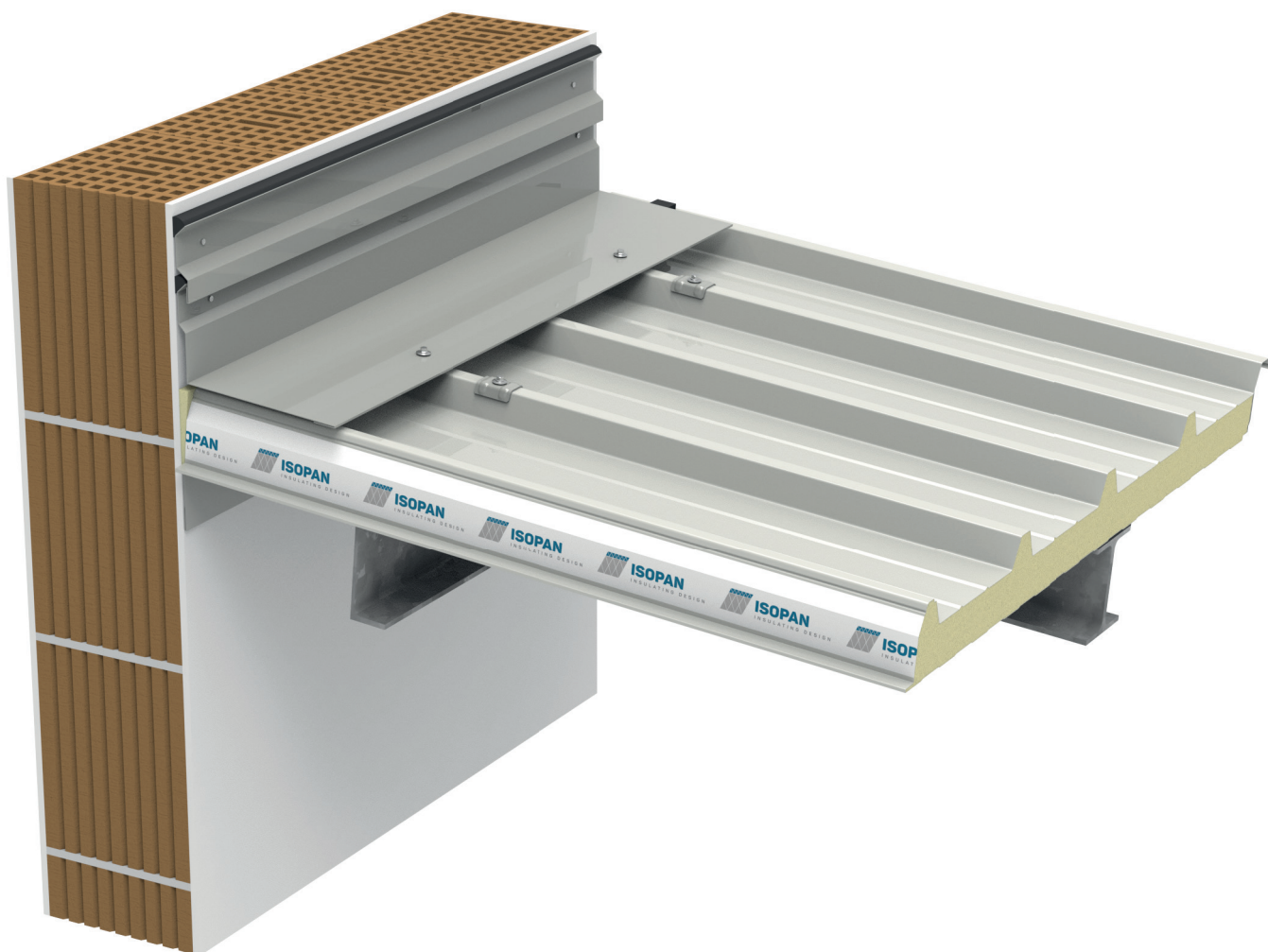
## LEGEND

1. Isopan roof sandwich panel
2. Isopan fixing sistem with metal cap and screw
3. Ridge flashing
4. Giuntoplast gasket
5. Rivet
6. On-site insulating material
7. Upper closure flashing
8. Isopan wall sandwich panel
9. Internal flashing
10. primary structure
11. Secondary structure

ATTENTION: the proposed solution does not constitute the project, and must be firstly assessed and evaluated by the designer and construction supervision. The designer is responsible for assessing the need to insert additional gasket and/or closing elements, even when not indicated in the drawing details. The property rights of this document belong to ISOPAN S.p.a. The contents can't be reproduced without prior written permission by the author. To choose the type of fastening, please refer to the screw type choice sheet; To choose the screw length, please refer to the data sheet for the correct screw length).

RF13

## ENDWALL CONNECTION - Concrete wall

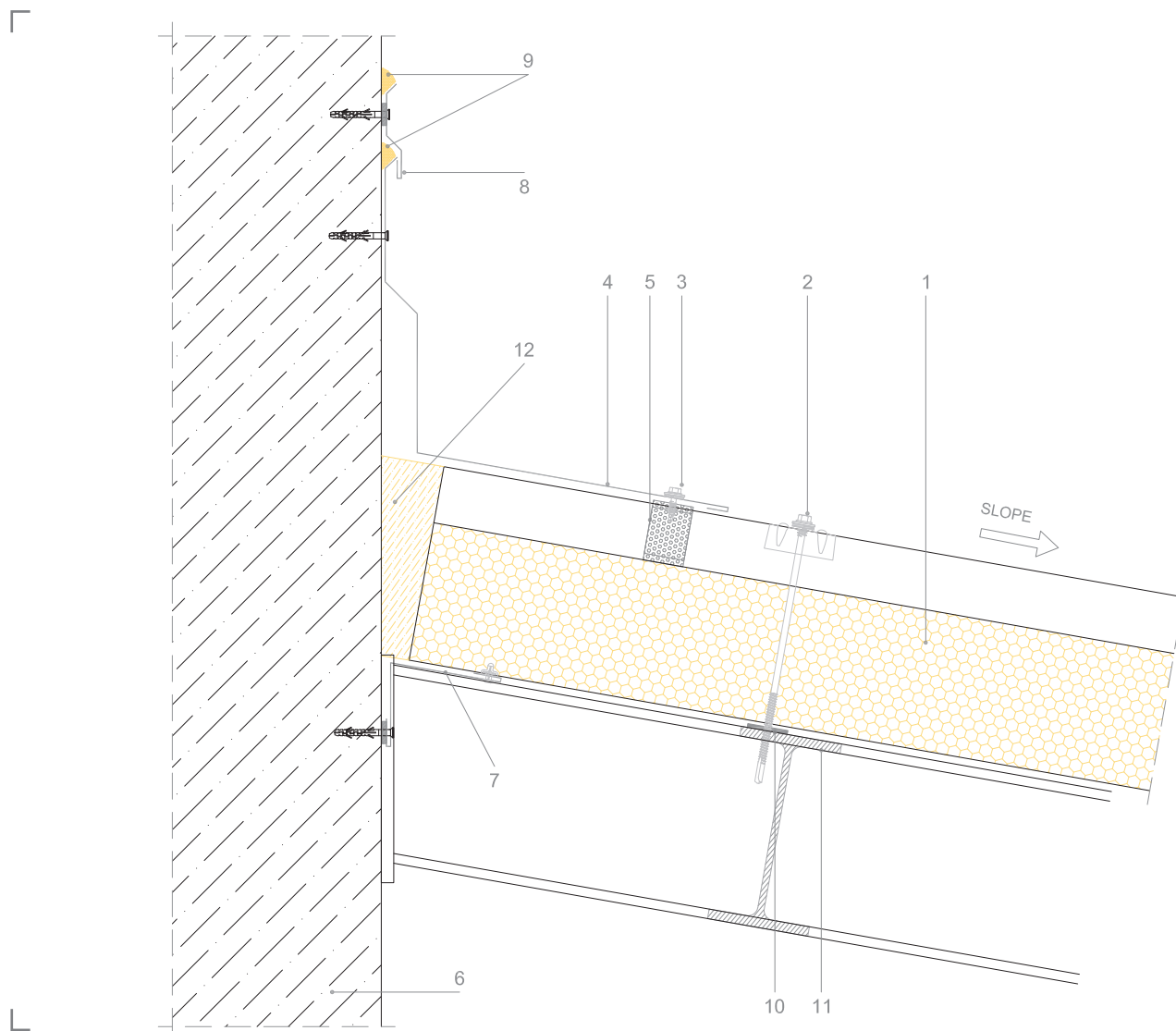


RF13

# ENDWALL CONNECTION - Concrete wall



You can download the .dwg and .pdf files collection at [isopan.com](http://isopan.com).



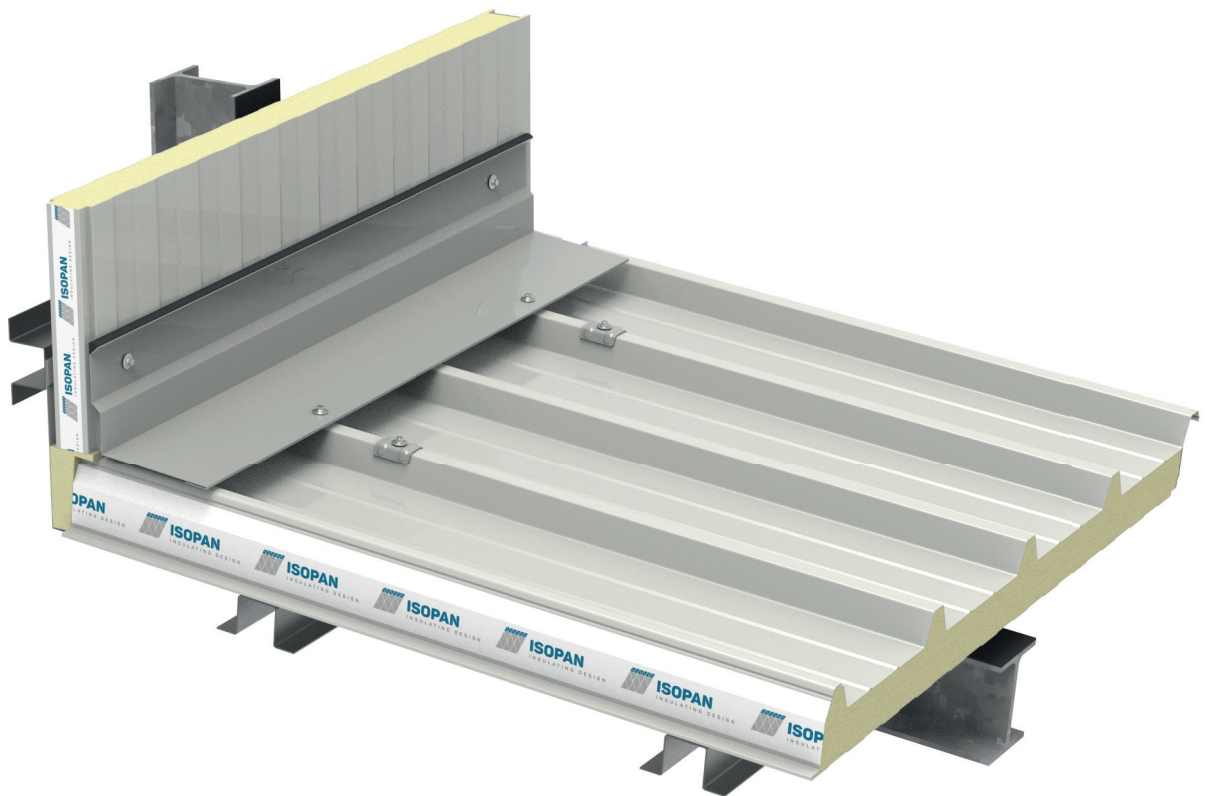
## LEGEND

1. Isopan roof sandwich panel
2. Isopan fixing sistem with metal cap and screw
3. Screw for flashing fixing
4. Ridge flashing
5. Giuntoplast gasket
6. Concrete / brick wall
7. Internal flashing
8. Metal flashing for drippig / waterproof
9. On-site sealant
10. On-site gasket
11. Secondary structure
12. On-site insulating material

ATTENTION: the proposed solution does not constitute the project, and must be firstly assessed and evaluated by the designer and construction supervision. The designer is responsible for assessing the need to insert additional gasket and/or closing elements, even when not indicated in the drawing details. The property rights of this document belong to ISOPAN S.p.a. The contents can't be reproduced without prior written permission by the author. To choose the type of fastening, please refer to the screw type choice sheet; To choose the screw length, please refer to the data sheet for the correct screw length).

RF14

## SLOPE STARTING from lower wall connection

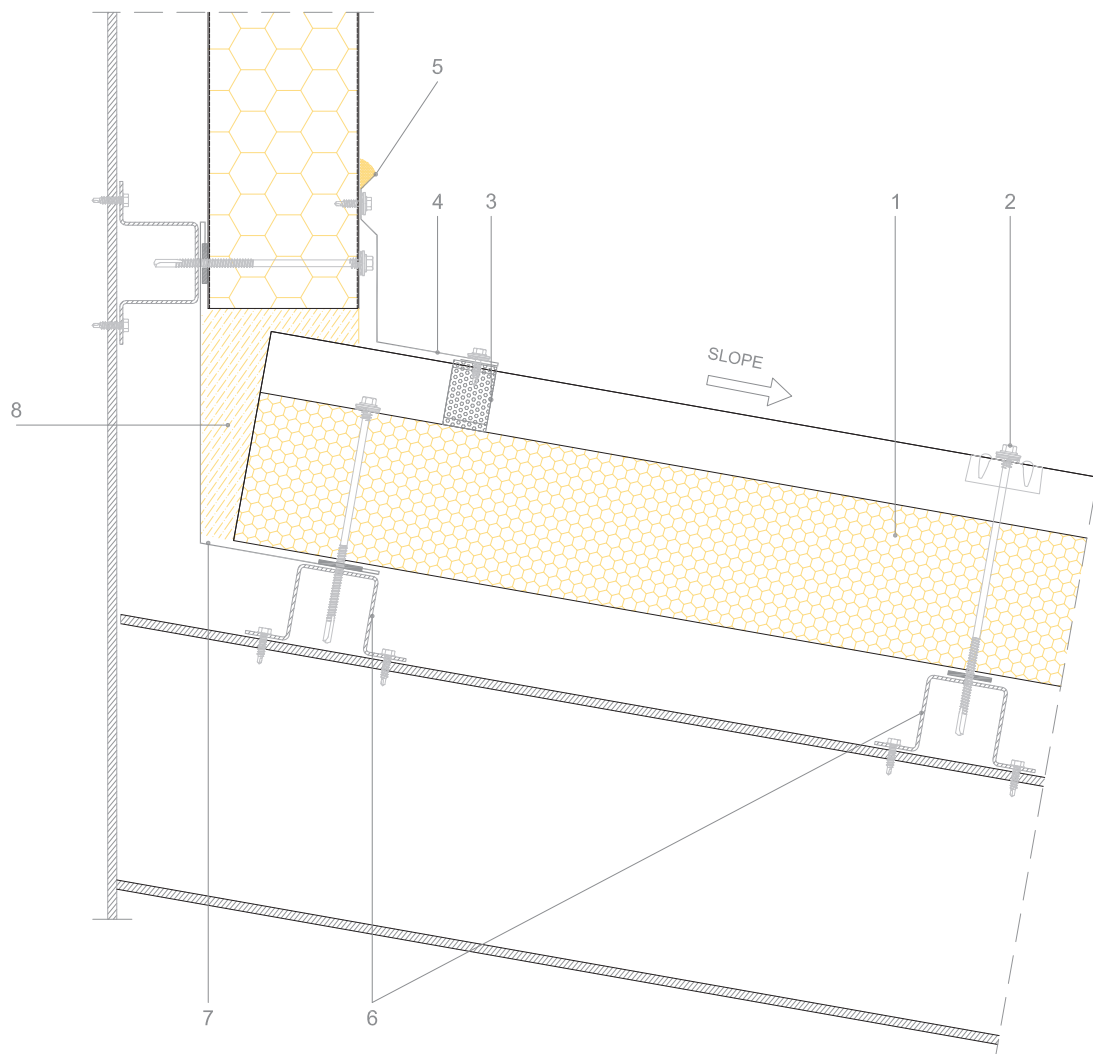


RF14

# SLOPE STARTING from lower wall connection



You can download the .dwg and .pdf files collection at [isopan.com](http://isopan.com).



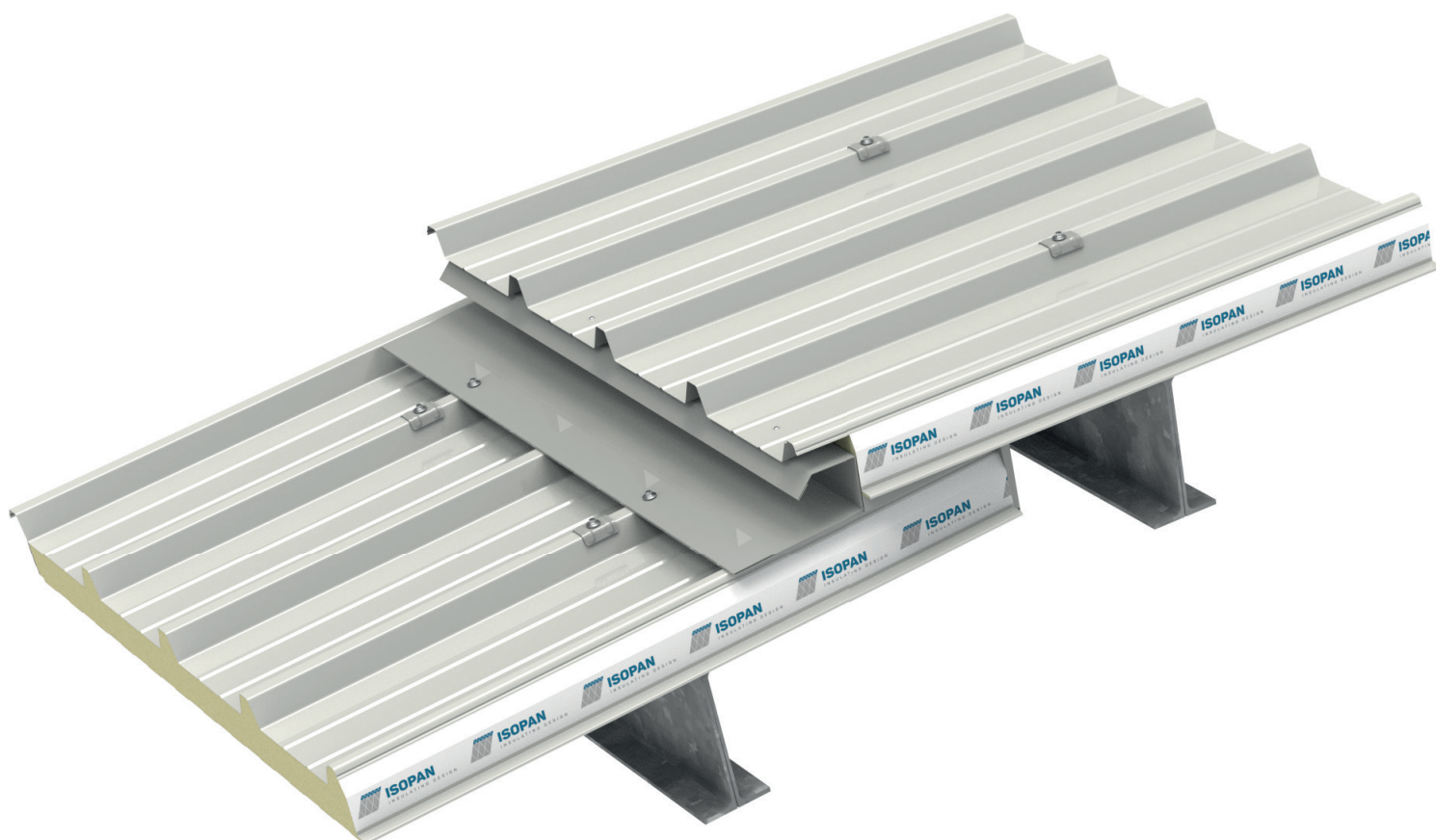
## LEGEND

1. Isopan roof sandwich panel
2. Isopan fixing sistem with metal cap and screw
3. Giuntoplast gasket
4. Flashing
5. On-site sealant
6. Secondary structure
7. Internal flashing
8. On-site insulating material

ATTENTION: the proposed solution does not constitute the project, and must be firstly assessed and evaluated by the designer and construction supervision. The designer is responsible for assessing the need to insert additional gasket and/or closing elements, even when not indicated in the drawing details. The property rights of this document belong to ISOPAN S.p.a. The contents can't be reproduced without prior written permission by the author. To choose the type of fastening, please refer to the screw type choice sheet; To choose the screw length, please refer to the data sheet for the correct screw length).

RF15

## CONNECTION BETWEEN 2 Slopes



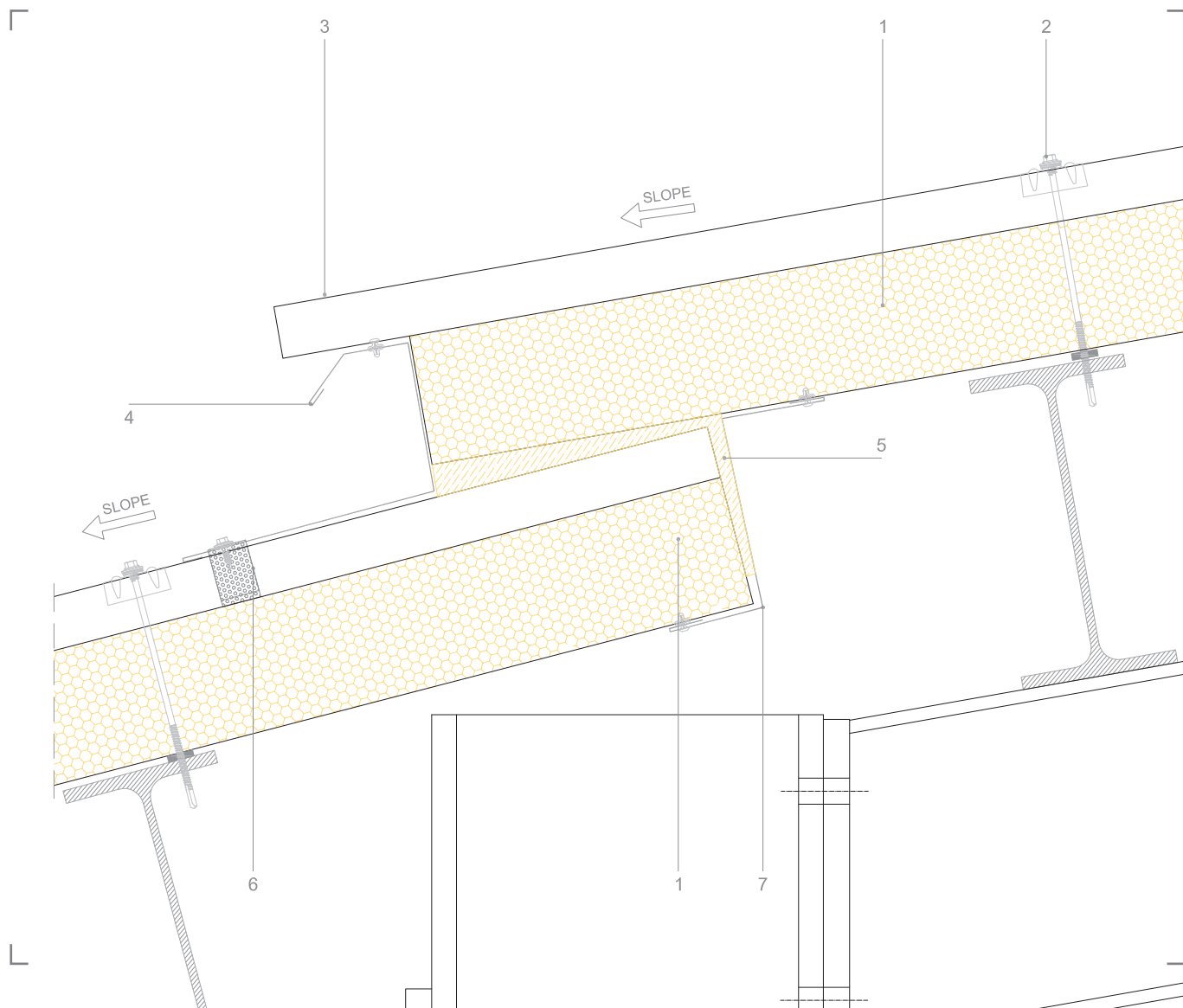
RF15

**ISOPAN**BUILDING ENVELOPE SOLUTIONS  
by Manni Group

# CONNECTION BETWEEN 2 Slopes



You can download the .dwg and .pdf files collection at [isopan.com](http://isopan.com).



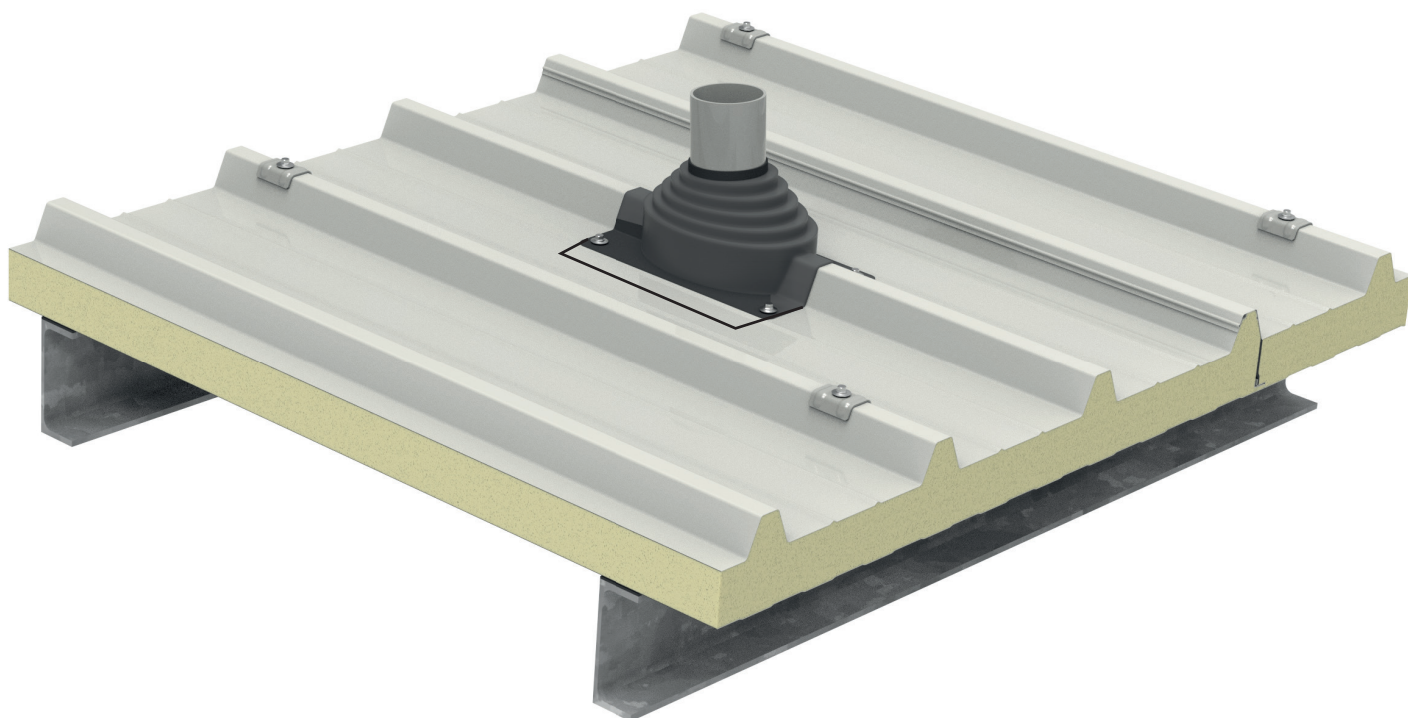
## LEGEND

1. Isopan roof sandwich panel
2. Isopan fixing sistem with metal cap and screw
3. Panel with dripping-cut
4. Under dripping flashing
5. On-site insulating material
6. Giutoplast gasket
7. Internal flashing

ATTENTION: the proposed solution does not constitute the project, and must be firstly assessed and evaluated by the designer and construction supervision. The designer is responsible for assessing the need to insert additional gasket and/or closing elements, even when not indicated in the drawing details. The property rights of this document belong to ISOPAN S.p.a. The contents can't be reproduced without prior written permission by the author. To choose the type of fastening, please refer to the screw type choice sheet; To choose the screw length, please refer to the data sheet for the correct screw length).

RF16

**OUTLET** for Chimney or outgoing elements

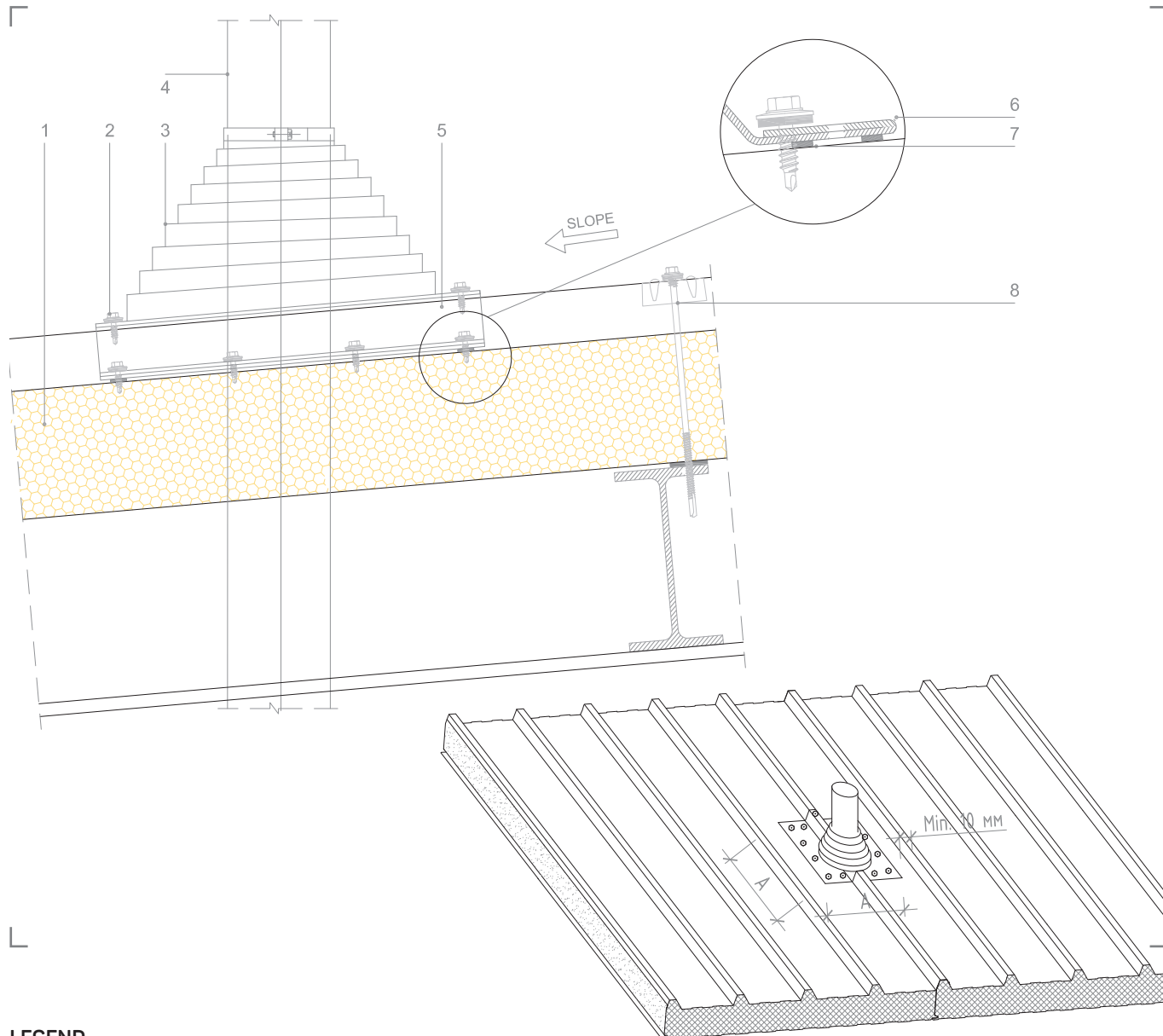


RF16

# OUTLET for Chimney or outgoing elements



You can download the .dwg and .pdf files collection at [isopan.com](http://isopan.com).



## LEGEND

1. Isopan roof sandwich panel
2. Screw for flexible outlet fixing
3. Adjustable outlet (must be cutted according pipe/chimney diameter)
4. Pipe / Chimney
5. Metal Plate
6. Metal plate edge
7. Adhesive Gasket
8. Isopan fixing sistem with metal cap and screw

ATTENTION: the proposed solution does not constitute the project, and must be firstly assessed and evaluated by the designer and construction supervision. The designer is responsible for assessing the need to insert additional gasket and/or closing elements, even when not indicated in the drawing details. The property rights of this document belong to ISOPAN S.p.a. The contents can't be reproduced without prior written permission by the author. To choose the type of fastening, please refer to the screw type choice sheet; To choose the screw length, please refer to the data sheet for the correct screw length).



# ISOPAN

BUILDING ENVELOPE SOLUTIONS  
by Manni Group

[www.isopan.com](http://www.isopan.com)



## ITALY

**Registered and Administrative HQ**  
Verona | Italy

**Isopan Spa**  
Verona | Italy  
Frosinone | Italy

## WORLD

**ISOPAN IBERICA**  
Tarragona | Spain

**ISOPAN EST**  
Bucharest | Romania

**ISOPAN DEUTSCHLAND**  
Halle (Saale) | Germany

**ISOPAN RUS**  
Volgograd | Russia

**ISOCINDU**  
Silao | Mexico

## SALES COMPANIES

**ISOPAN FRANCE**  
Paris | France

**ISOPAN MANNI GROUP CZ**  
Praha | Czech Republic