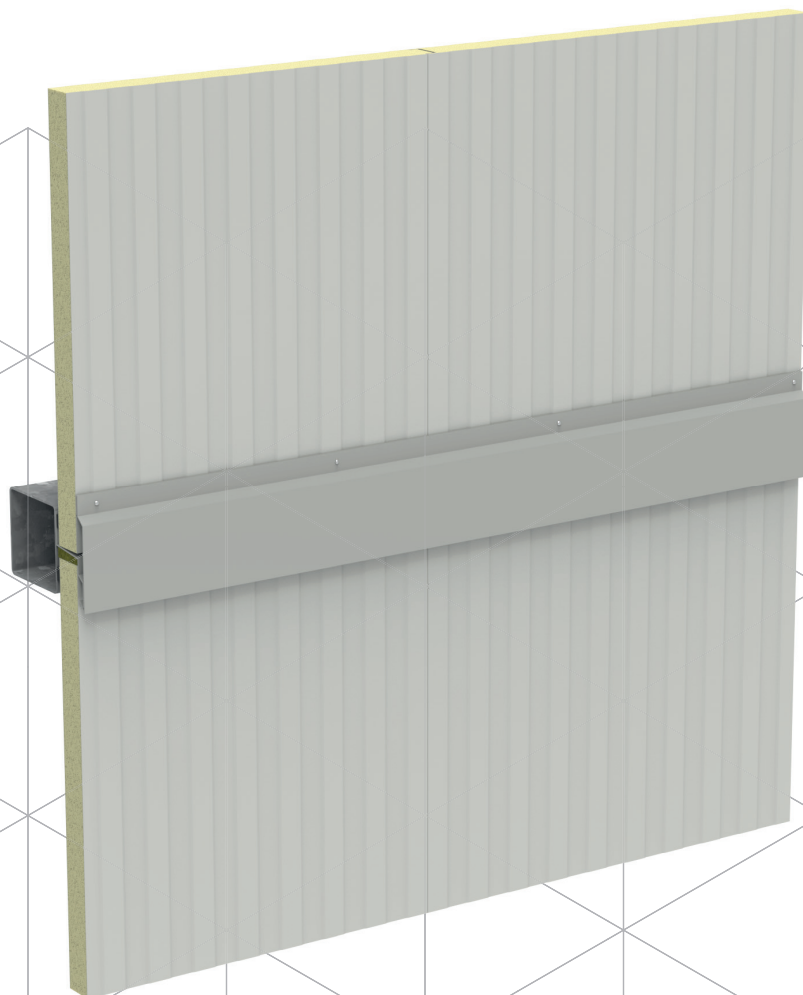


Technical Details and Assembly Drawings

WALL DETAILS



Wall

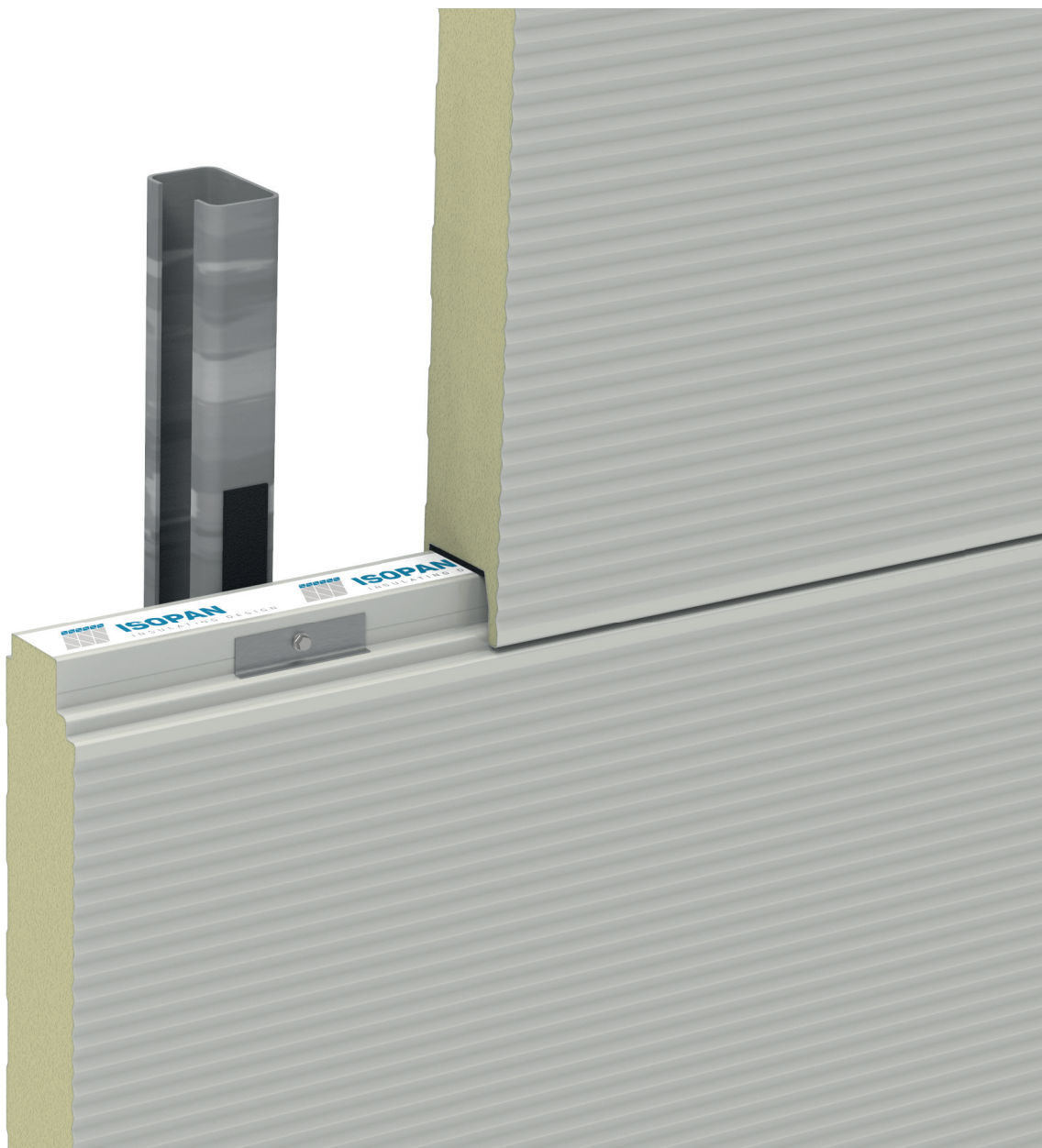
Table of contents

Drawings Index

Code Drawings	Title	Page
WP00	HIDDEN FASTENING - Metal plates	
WP01	Panel-to-Panel Joint - Vert. installation	
WP02	Joint for thermal expansion	
WP03	Panel-to-Panel Joint - Vert. installation	
WP04	Joint cover with ISO-L-52 metal flashing	
WP05	Joint covering with ADDJoint Profile	
WP06	ADDFast profiles	
WP07	Ground connection - type 1	
WP08	Ground connection - type 2	
WP09	Ground connection - type 3	
WP10	Ground connection - type 4	
WP11	Ground connection - type 5	
WP12	Concrete ceiling connection	
WP13	Concrete Wall connection - Horizontal section	
WP14	Corner connection - Horizontal section	
WP15	Corner connection - Horizontal section	
WP16	Corner connection - Horizontal section	
WP17	Corner connection - Horizontal section	
WP18	Wall structure connection - Horiz. section	
WP19	Wall structure connection - Horiz. section	
WP20	Wall structure connection - Horiz. section	
WP21	Corner Panels	
WP22	Window connection	
WP23	Window connection - horizontal section	
WP24	Industrial door connection	

WP00

HIDDEN FASTENING - Metal plates

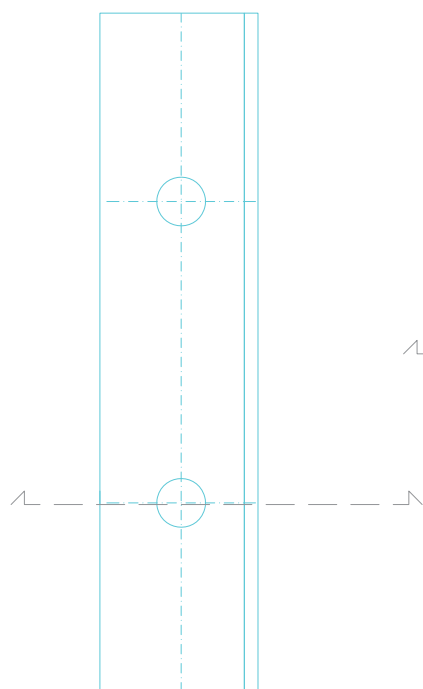


WP00

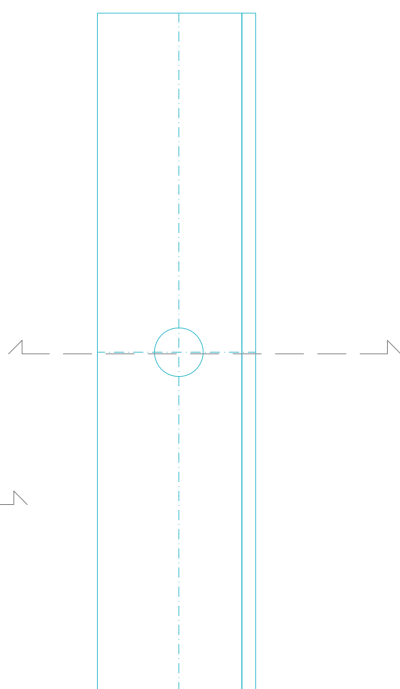
HIDDEN FASTENING - Metal plates



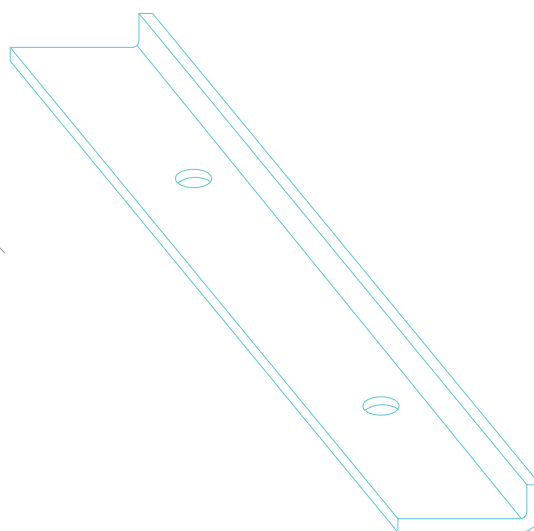
You can download the .dwg and .pdf files collection at isopan.com.



Metal plate 2-holes
Upper view



Metal plate 1-hole
Upper view



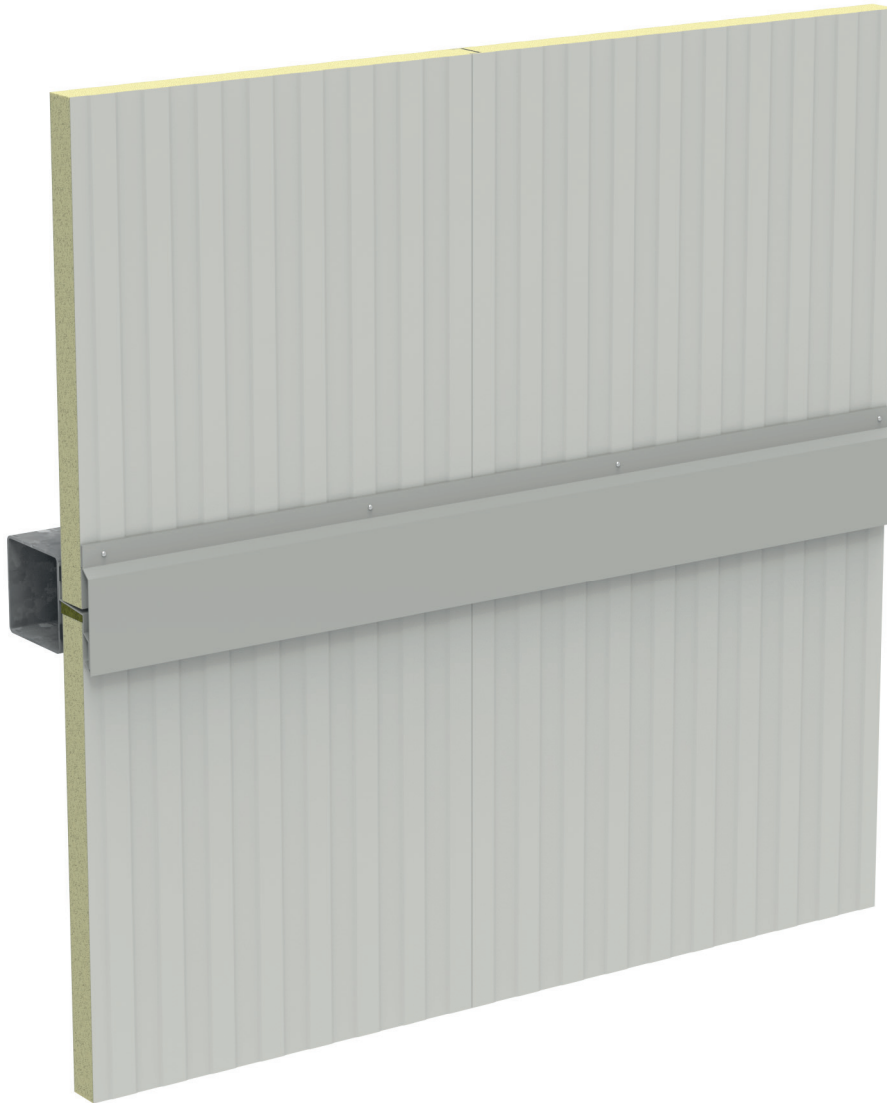
Metal plate
Lateral section view

IMPORTANT: Metal plate installation and positioning might change depending on design characteristics and/or Isopan sandwich panel installed. Please check the technical informations with Isopan.

ATTENTION: the proposed solution does not constitute the project, and must be firstly assessed and evaluated by the designer and construction supervision. The designer is responsible for assessing the need to insert additional gasket and/or closing elements, even when not indicated in the drawing details. The property rights of this document belong to ISOPAN S.p.a. The contents can't be reproduced without prior written permission by the author. To choose the type of fastening, please refer to the screw type choice sheet; To choose the screw length, please refer to the data sheet for the correct screw length).

WP01

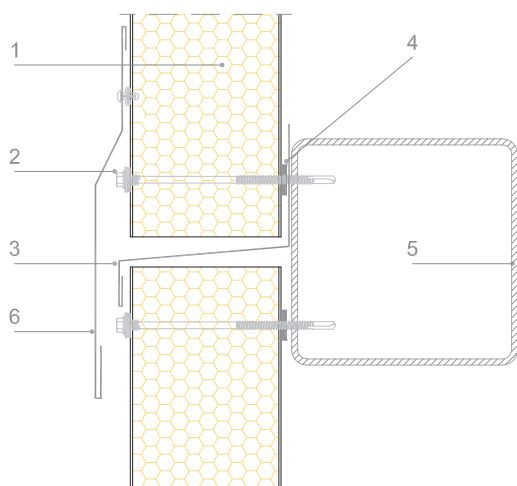
Panel-to-Panel Joint - Vert. installation



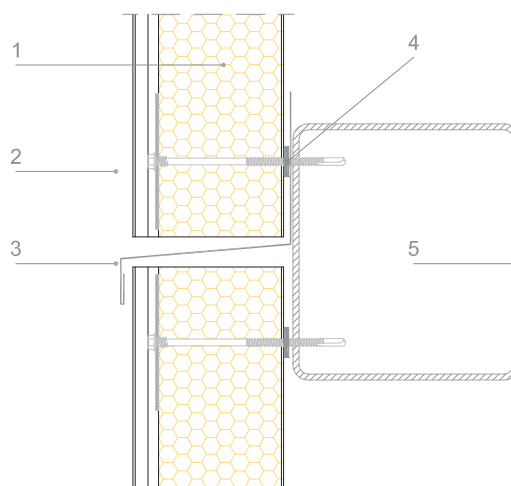
Panel-to-Panel Joint - Vert. installation



You can download the .dwg and .pdf files collection at isopan.com.



Panel with visible fastening joint



Panel with hidden fastening joint

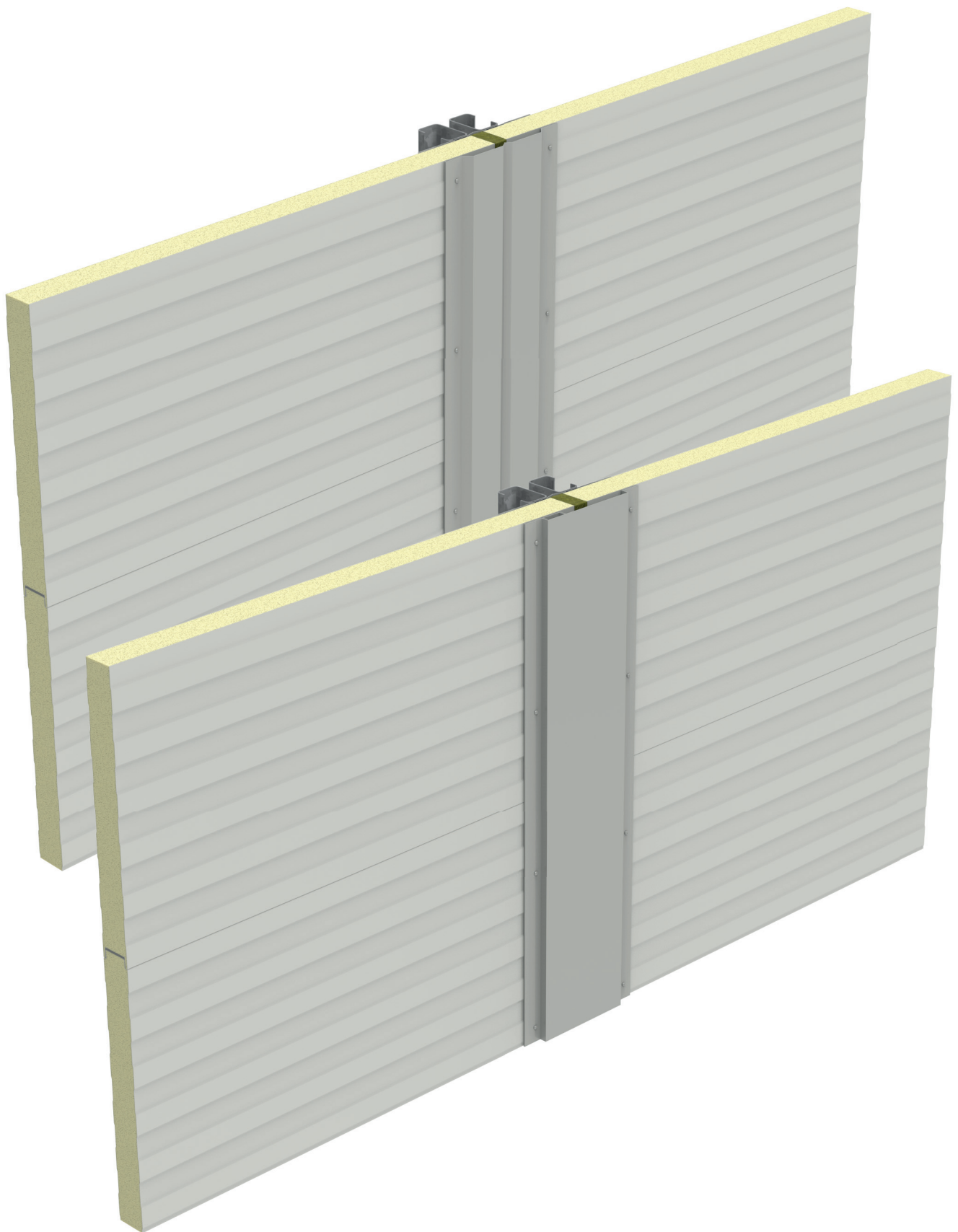
LEGEND

1. Isopan Wall sandwich panel
2. Self drilling screw for panel fastening
3. Prepainted metal flashing - dripping
4. Gasket
5. Load bearing structure
6. External metal flashing

ATTENTION: the proposed solution does not constitute the project, and must be firstly assessed and evaluated by the designer and construction supervision. The designer is responsible for assessing the need to insert additional gasket and/or closing elements, even when not indicated in the drawing details. The property rights of this document belong to ISOPAN S.p.a. The contents can't be reproduced without prior written permission by the author. To choose the type of fastening, please refer to the screw type choice sheet; To choose the screw length, please refer to the data sheet for the correct screw length).

WP02

Joint for thermal expansion

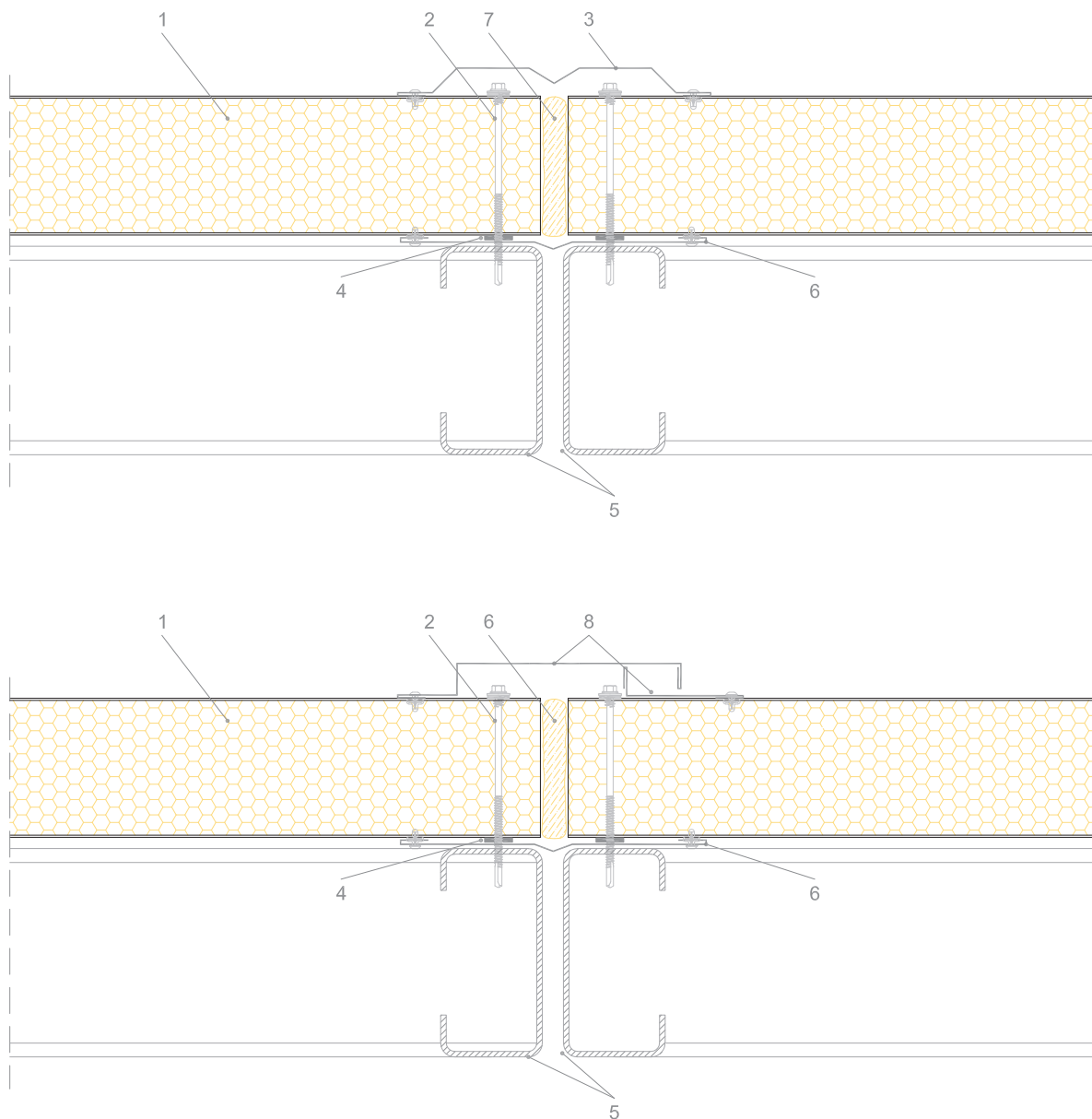


WP02

Joint for thermal expansion



You can download the .dwg and .pdf files collection at isopan.com.



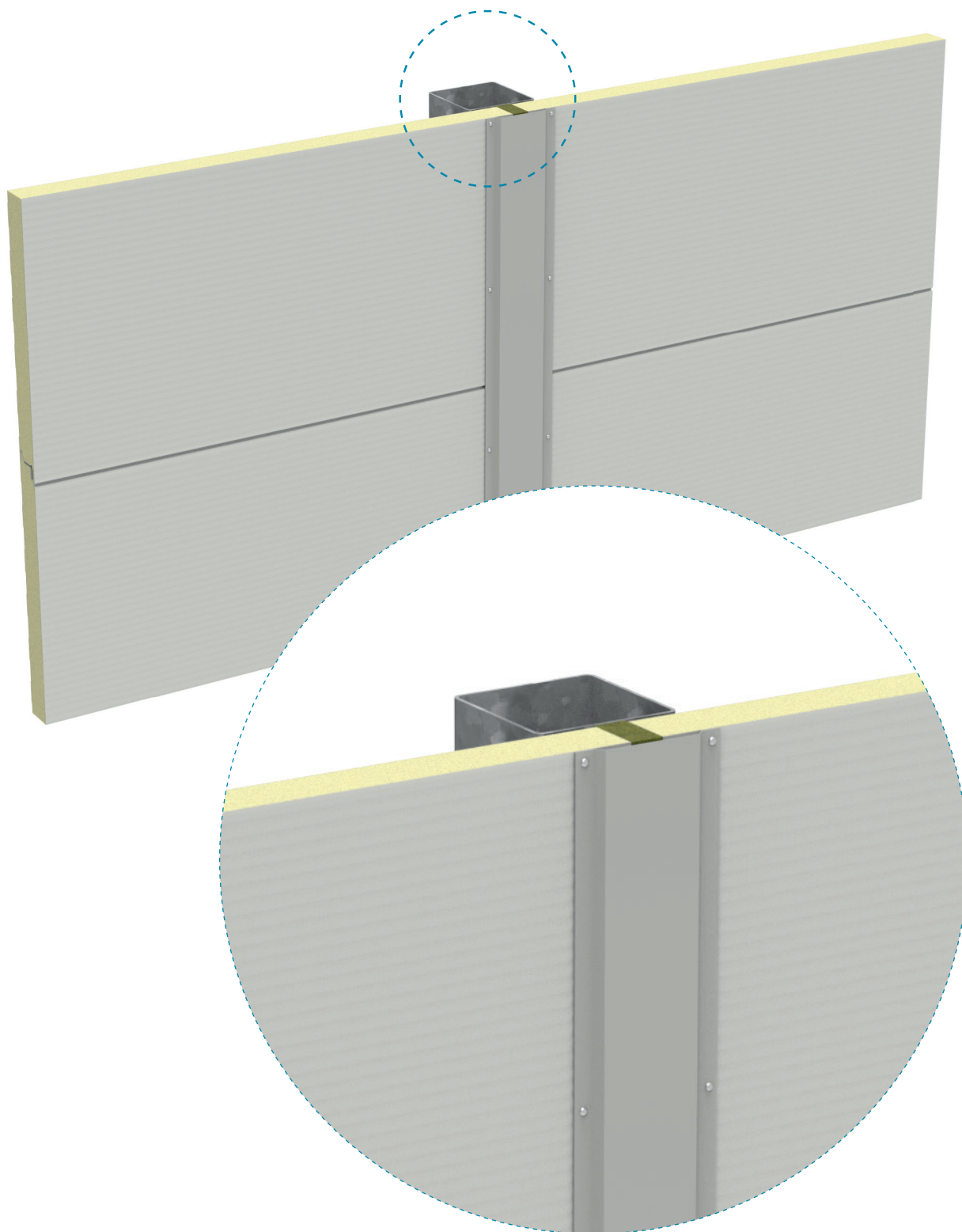
LEGEND

1. Isopan Wall sandwich panel
2. Self drilling screw for panel fastening
3. Prepainted metal flashing - joint cover (allow the thermal dilatation)
4. Gasket
5. Load bearing structure
6. On-site insulation
7. Prepainted metal flashing - internal joint cover (allow the thermal dilatation)
8. Double Prepainted metal flashing - joint cover (allow the thermal dilatation)

ATTENTION: the proposed solution does not constitute the project, and must be firstly assessed and evaluated by the designer and construction supervision. The designer is responsible for assessing the need to insert additional gasket and/or closing elements, even when not indicated in the drawing details. The property rights of this document belong to ISOPAN S.p.a. The contents can't be reproduced without prior written permission by the author. To choose the type of fastening, please refer to the screw type choice sheet; To choose the screw length, please refer to the data sheet for the correct screw length).

WP03

Panel-to-Panel Joint - Vert. installation

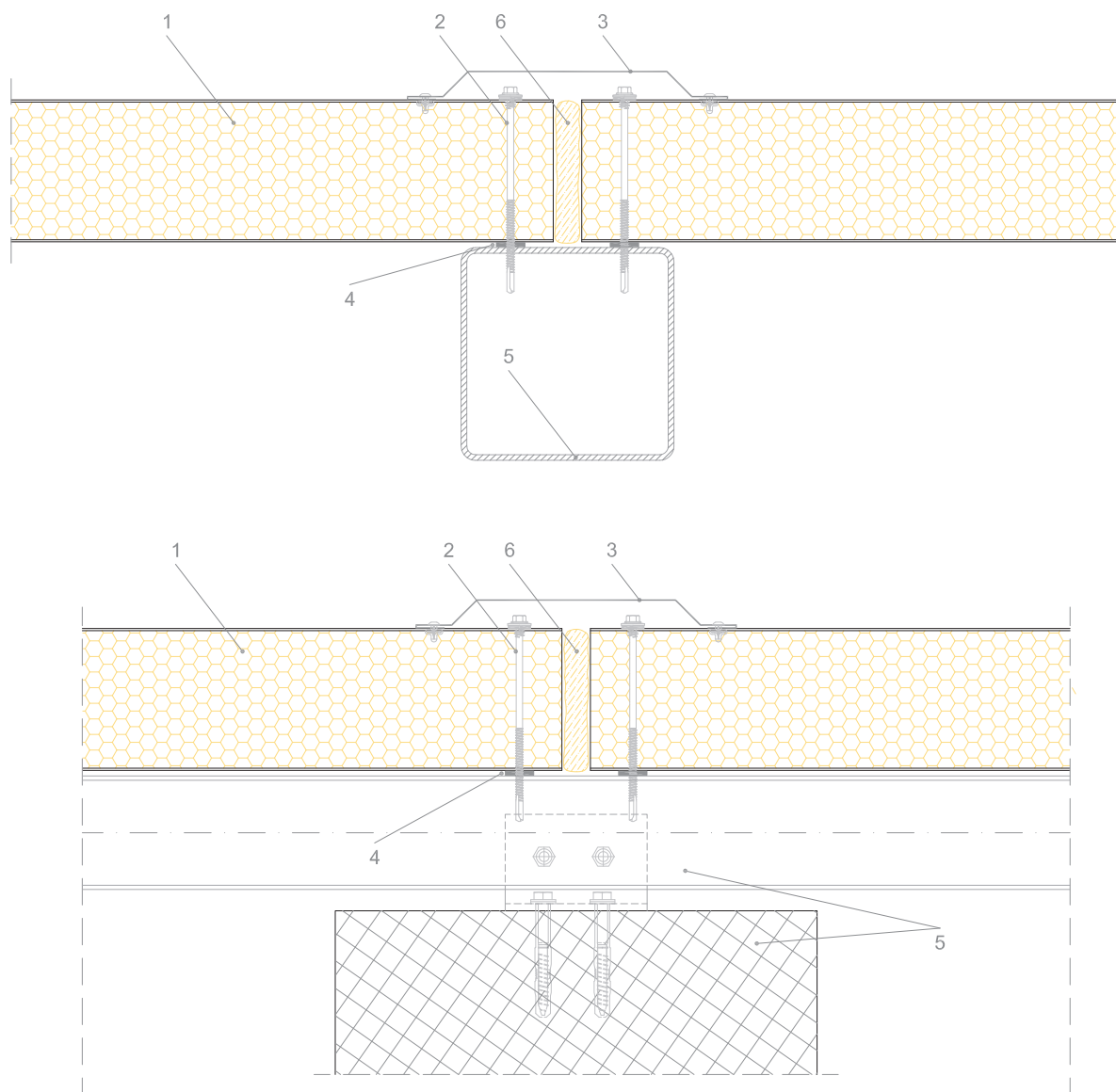


WP03

Panel-to-Panel Joint - Vert. installation



You can download the .dwg and .pdf files collection at isopan.com.



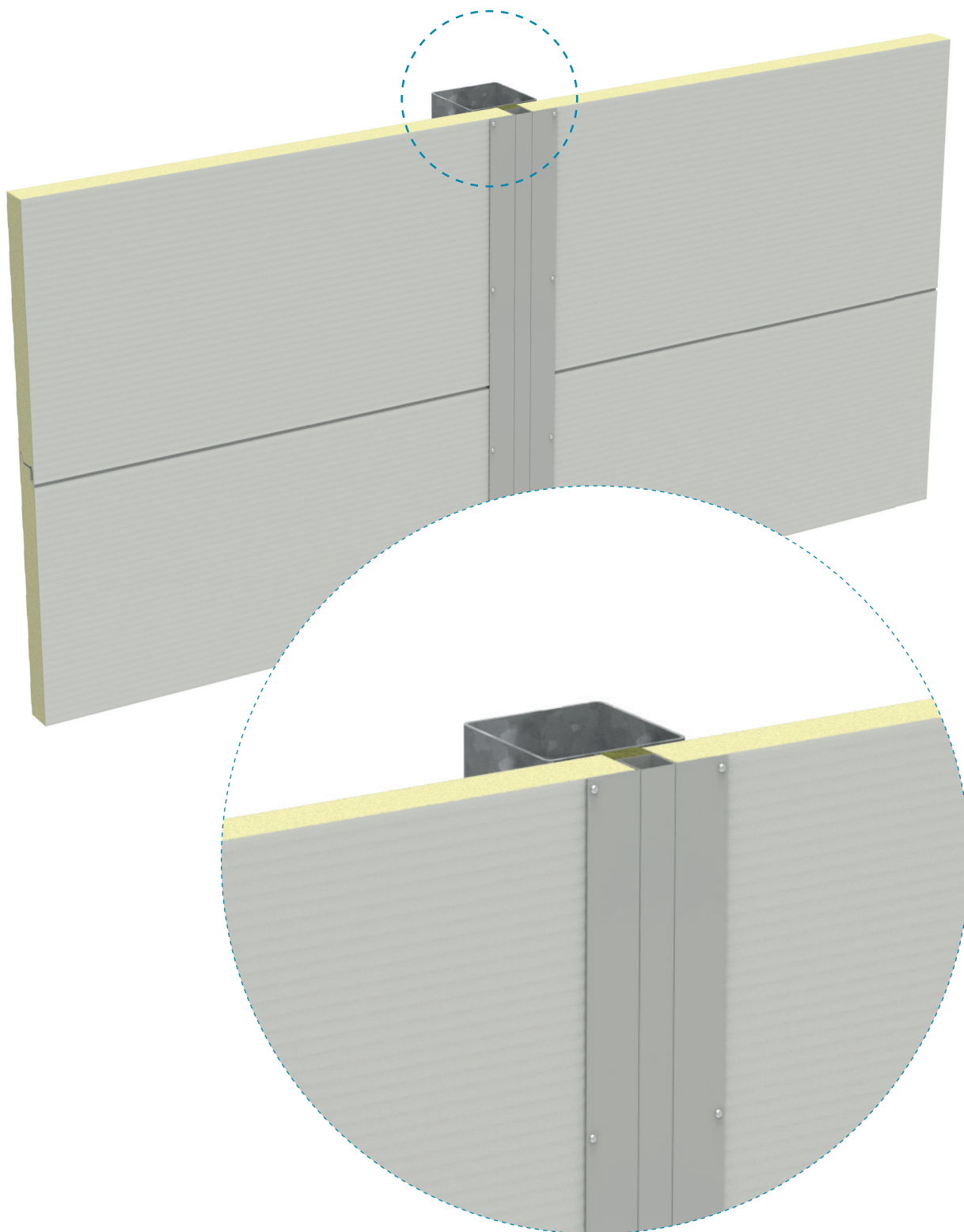
LEGEND

1. Isopan Wall sandwich panel
2. Self drilling screw for panel fastening
3. Prepainted metal flashing - joint cover
4. Gasket
5. Load bearing structure
6. On-site insulation

ATTENTION: the proposed solution does not constitute the project, and must be firstly assessed and evaluated by the designer and construction supervision. The designer is responsible for assessing the need to insert additional gasket and/or closing elements, even when not indicated in the drawing details. The property rights of this document belong to ISOPAN S.p.a. The contents can't be reproduced without prior written permission by the author. To choose the type of fastening, please refer to the screw type choice sheet; To choose the screw length, please refer to the data sheet for the correct screw length).

WP04

Joint cover with ISO-L-52 metal flashing

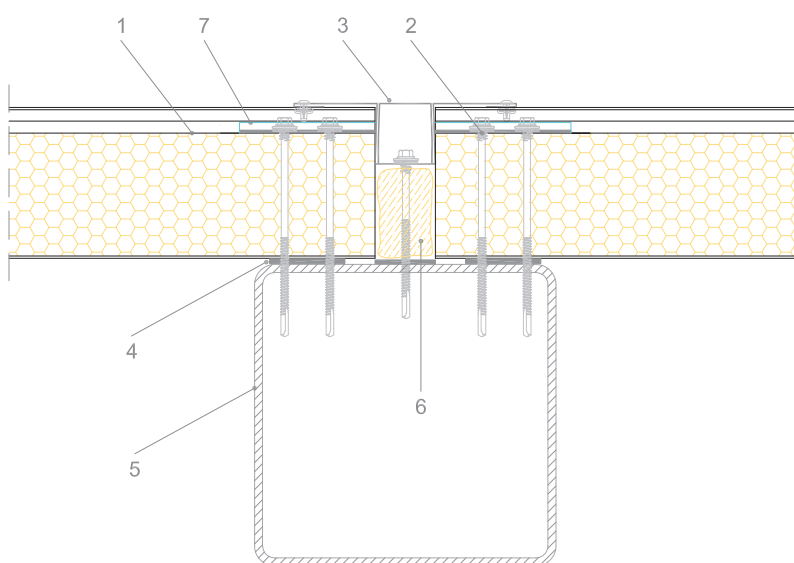


WP04

Joint cover with ISO-L-52 metal flashing



You can download the .dwg and .pdf files collection at isopan.com.



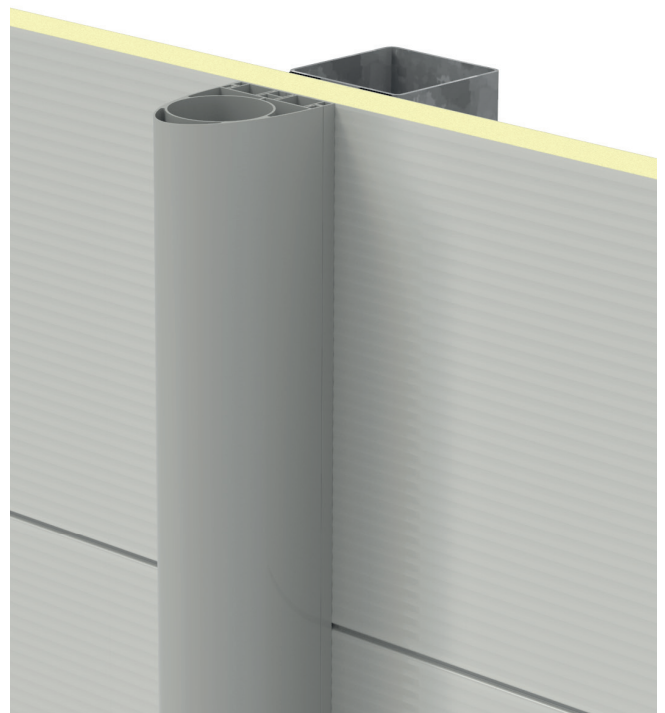
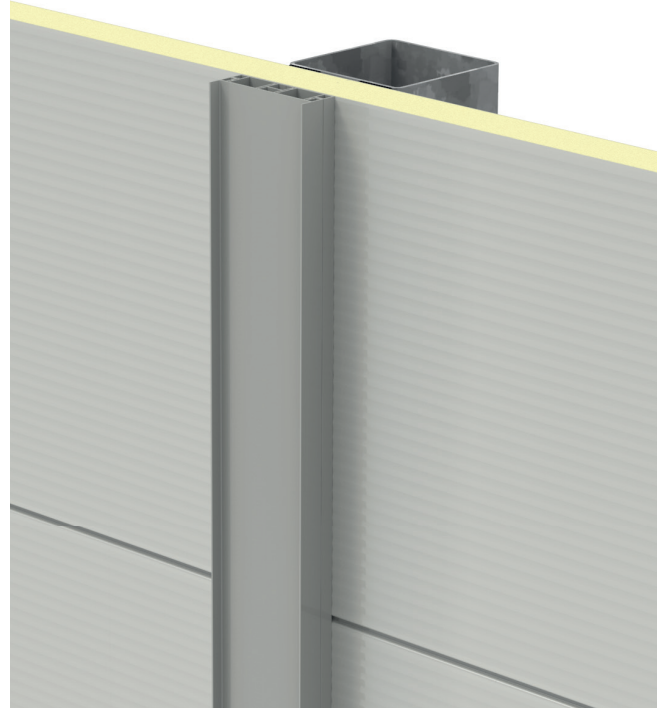
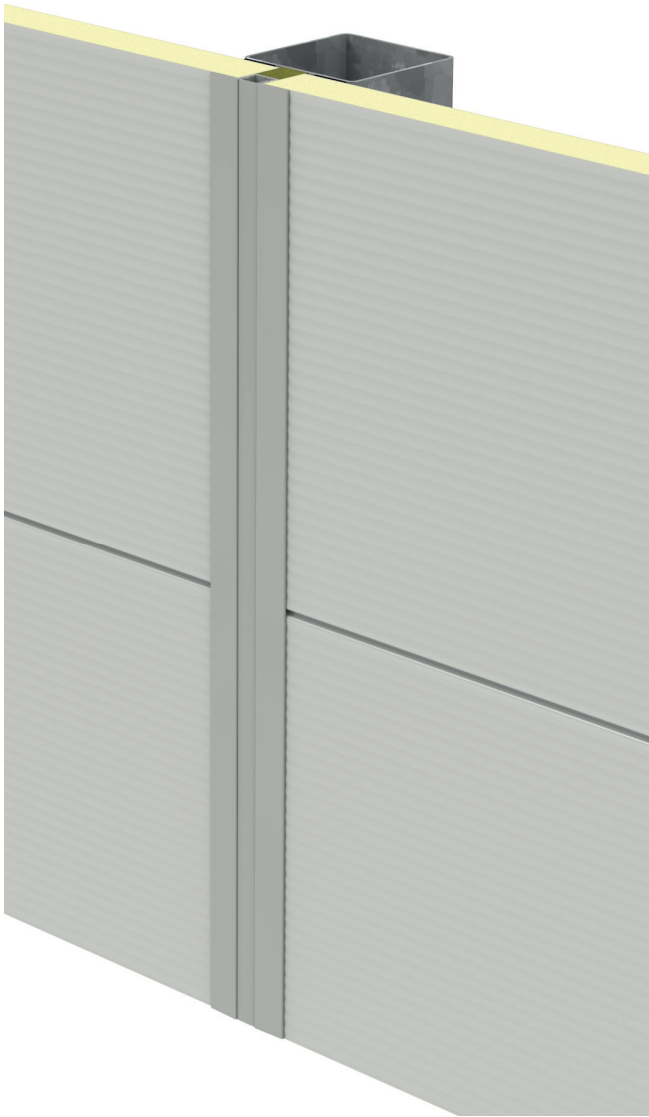
LEGEND

1. Isopan Wall sandwich panel
2. Self drilling screw for panel fastening
3. Prepainted metal flashing - joint cover ISO-L-52
4. Gasket
5. Load bearing structure
6. On-site insulation
7. Metal plate 2-holes

ATTENTION: the proposed solution does not constitute the project, and must be firstly assessed and evaluated by the designer and construction supervision. The designer is responsible for assessing the need to insert additional gasket and/or closing elements, even when not indicated in the drawing details. The property rights of this document belong to ISOPAN S.p.a. The contents can't be reproduced without prior written permission by the author. To choose the type of fastening, please refer to the screw type choice sheet; To choose the screw length, please refer to the data sheet for the correct screw length).

WP05

Joint covering with ADDJoint Profile

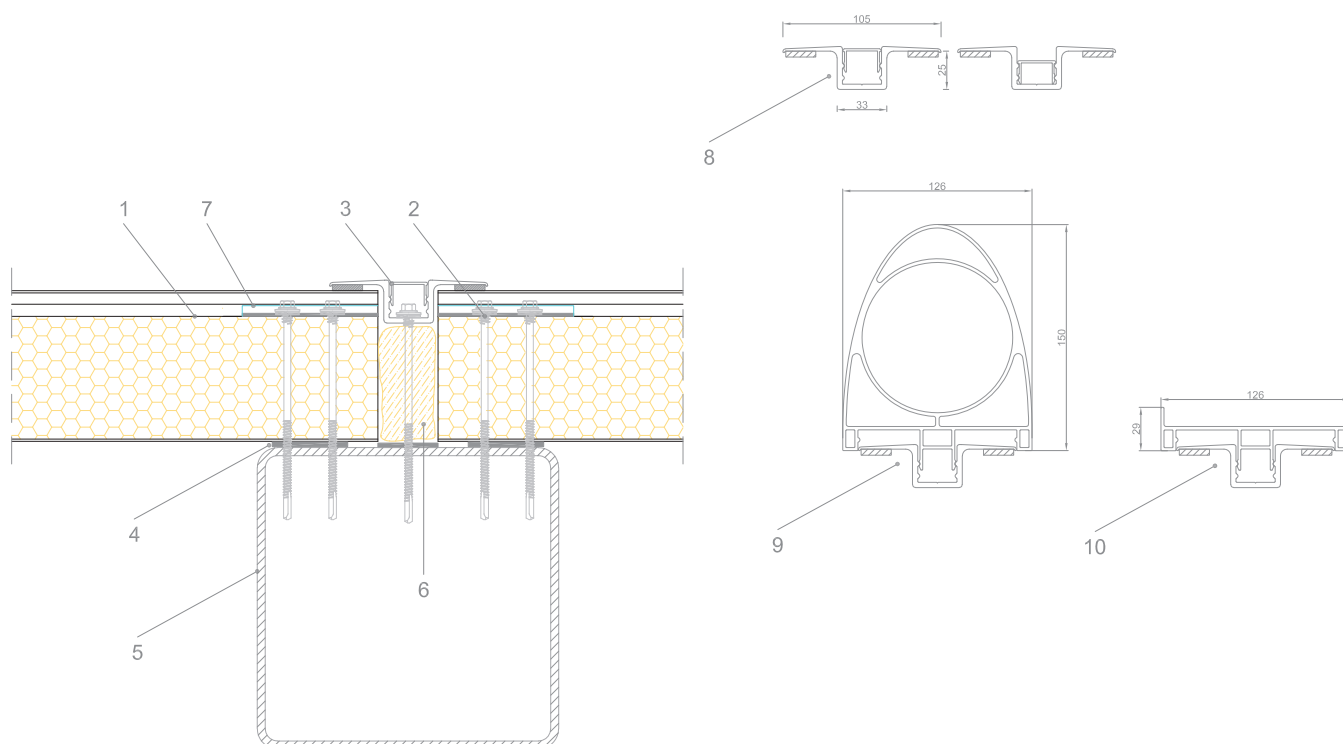


WP05

Joint covering with ADDJoint Profile



You can download the .dwg and .pdf files collection at isopan.com.



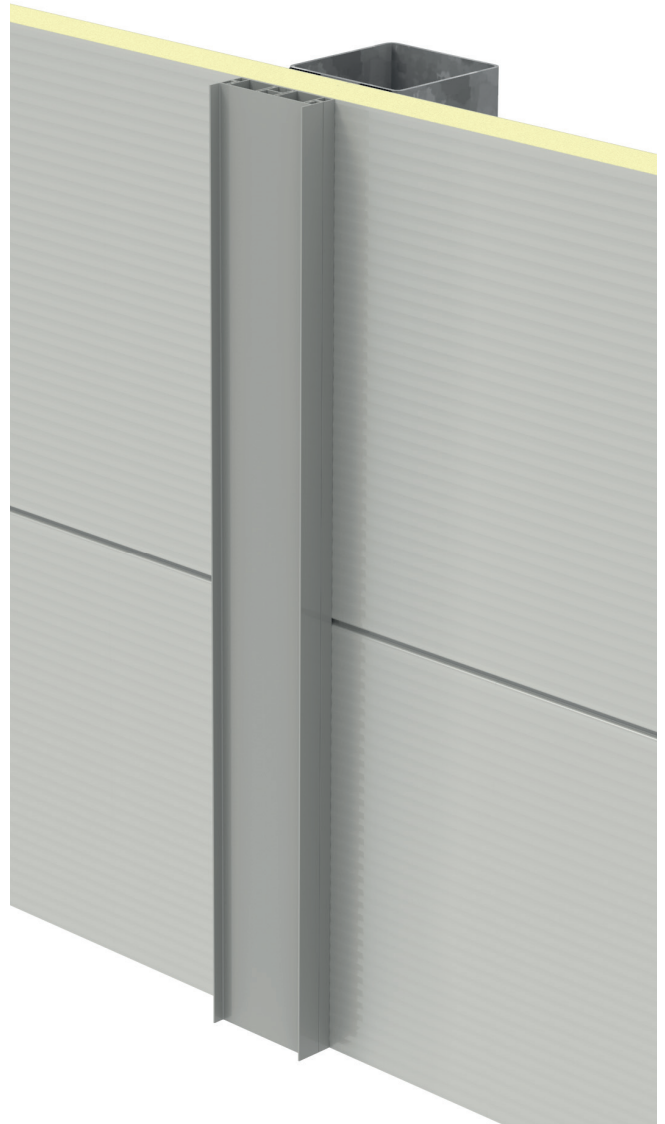
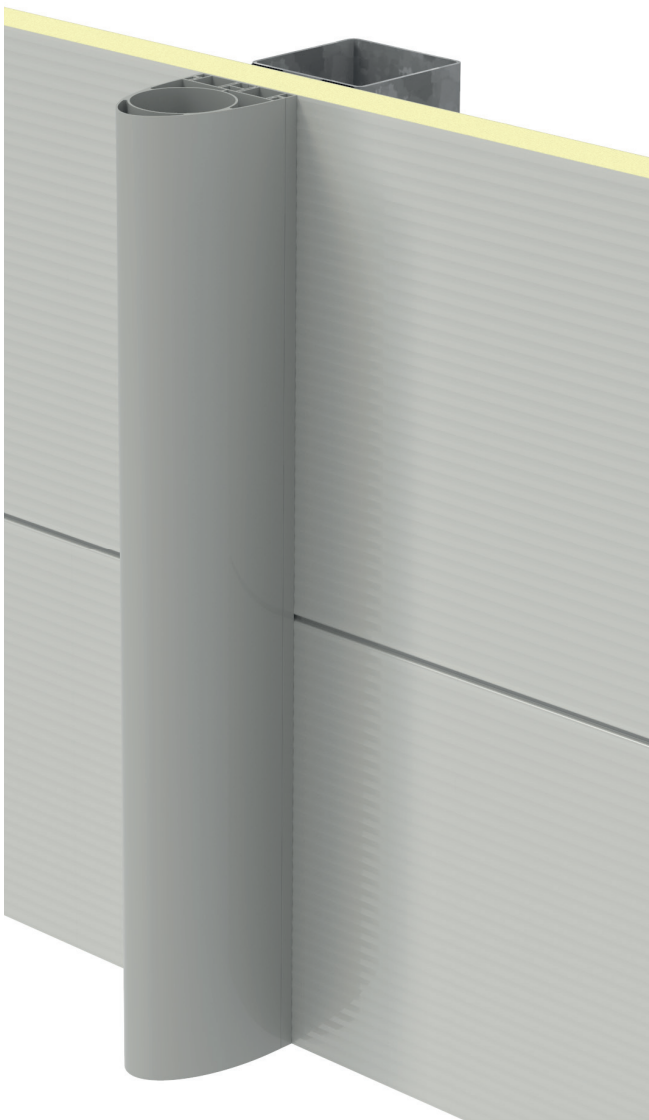
LEGEND

1. Isopan Wall sandwich panel
2. Self drilling screw for panel fastening
3. Extruded aluminium joint cover ADD-Joint + Clip
4. Gasket
5. Load bearing structure
6. On-site insulation
7. Metal plate 2-holes
8. Extruded aluminium joint cover ADD-Joint + Clip (2 configurations available)
9. Extruded aluminium joint cover ADD-Joint and extruded aluminium profile FLAT
10. Extruded aluminium joint cover ADD-Joint and extruded aluminium profile RP

ATTENTION: the proposed solution does not constitute the project, and must be firstly assessed and evaluated by the designer and construction supervision. The designer is responsible for assessing the need to insert additional gasket and/or closing elements, even when not indicated in the drawing details. The property rights of this document belong to ISOPAN S.p.a. The contents can't be reproduced without prior written permission by the author. To choose the type of fastening, please refer to the screw type choice sheet; To choose the screw length, please refer to the data sheet for the correct screw length).

WP06

ADDFast profiles

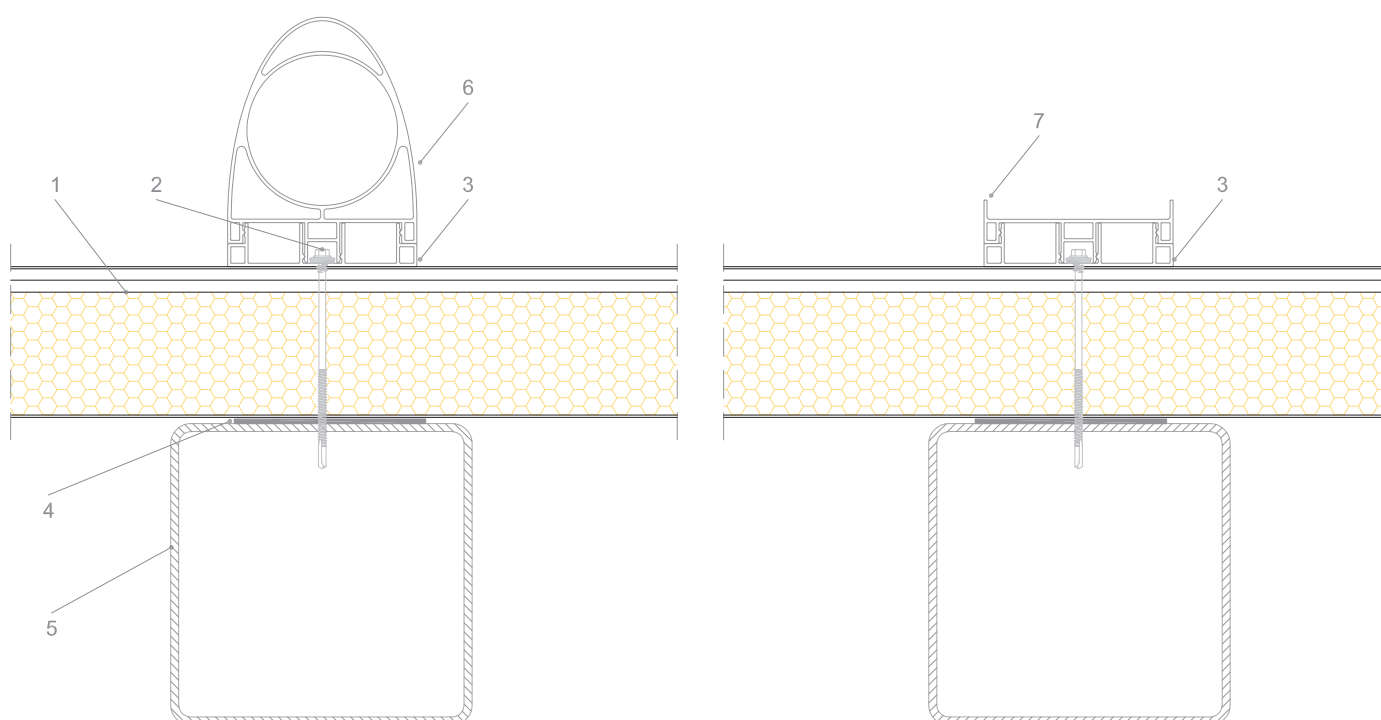


WP06

ADDFast profiles



You can download the .dwg and .pdf files collection at isopan.com.



LEGEND

1. Isopan Wall sandwich panel
2. Self drilling screw for intermediate panel fastening
3. Extruded aluminium profile ADD-Fast
4. Gasket
5. Load bearing structure
6. Aluminium extruded profile RP
7. Aluminium extruded profile FLAT

ATTENTION: the proposed solution does not constitute the project, and must be firstly assessed and evaluated by the designer and construction supervision. The designer is responsible for assessing the need to insert additional gasket and/or closing elements, even when not indicated in the drawing details. The property rights of this document belong to ISOPAN S.p.a. The contents can't be reproduced without prior written permission by the author. To choose the type of fastening, please refer to the screw type choice sheet; To choose the screw length, please refer to the data sheet for the correct screw length).

WP07

Ground connection - type 1

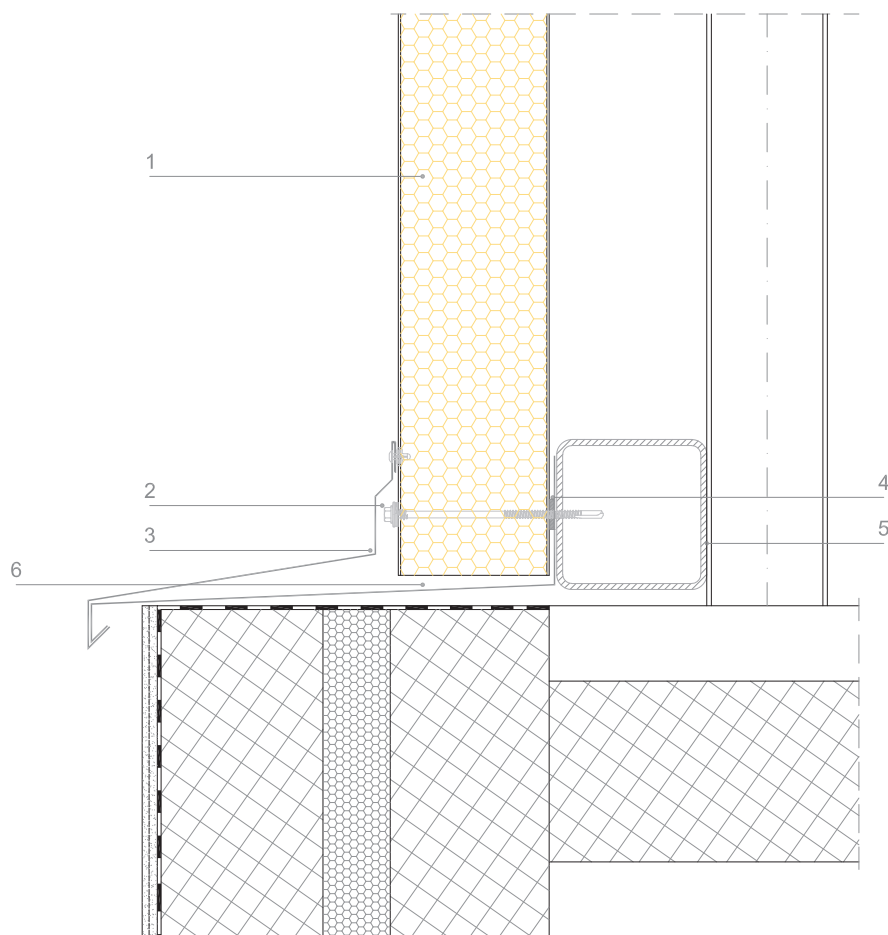


WP07

Ground connection - type 1



You can download the .dwg and .pdf files collection at isopan.com.



LEGEND

1. Isopan Wall sandwich panel
2. Self drilling screw for panel fasteni
3. Prepainted metal flashing - External dripping
4. Gasket
5. Load bearing structure
6. Prepainted metal flashing - internal flashing

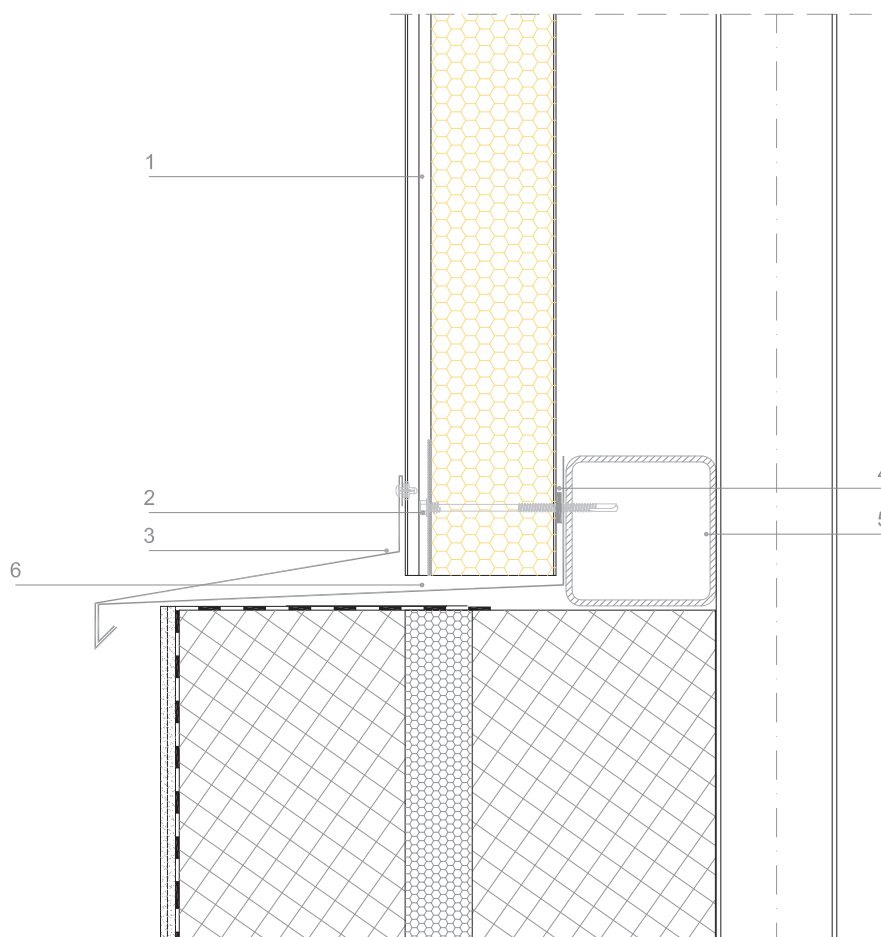
ATTENTION: the proposed solution does not constitute the project, and must be firstly assessed and evaluated by the designer and construction supervision. The designer is responsible for assessing the need to insert additional gasket and/or closing elements, even when not indicated in the drawing details. The property rights of this document belong to ISOPAN S.p.a. The contents can't be reproduced without prior written permission by the author. To choose the type of fastening, please refer to the screw type choice sheet; To choose the screw length, please refer to the data sheet for the correct screw length).

WP08

Ground connection - type 2



You can download the .dwg and .pdf files collection at isopan.com.



LEGEND

1. Isopan Wall sandwich panel
2. Self drilling screw for panel fastening - with metal plate
3. Pre-painted metal flashing - External dripping
4. Gasket
5. Load bearing structure
6. Pre-painted metal flashing - internal flashing

ATTENTION: the proposed solution does not constitute the project, and must be firstly assessed and evaluated by the designer and construction supervision. The designer is responsible for assessing the need to insert additional gasket and/or closing elements, even when not indicated in the drawing details. The property rights of this document belong to ISOPAN S.p.a. The contents can't be reproduced without prior written permission by the author. To choose the type of fastening, please refer to the screw type choice sheet; To choose the screw length, please refer to the data sheet for the correct screw length).

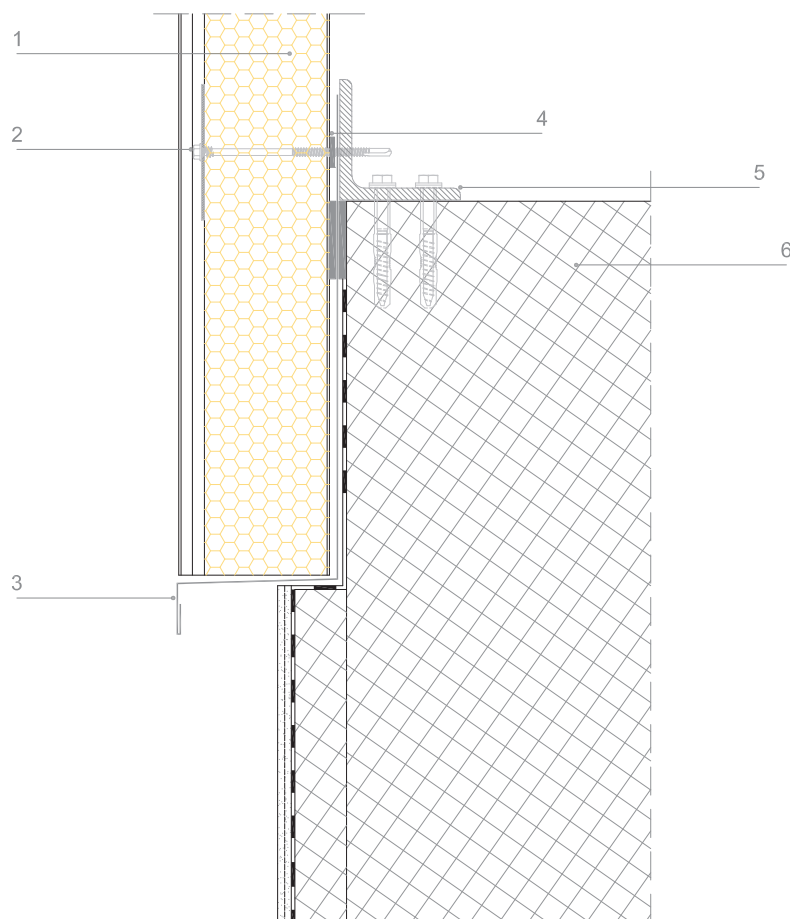
WP09

**ISOPAN**BUILDING ENVELOPE SOLUTIONS
by Manni Group

Ground connection - type 3



You can download the .dwg and .pdf files collection at isopan.com.



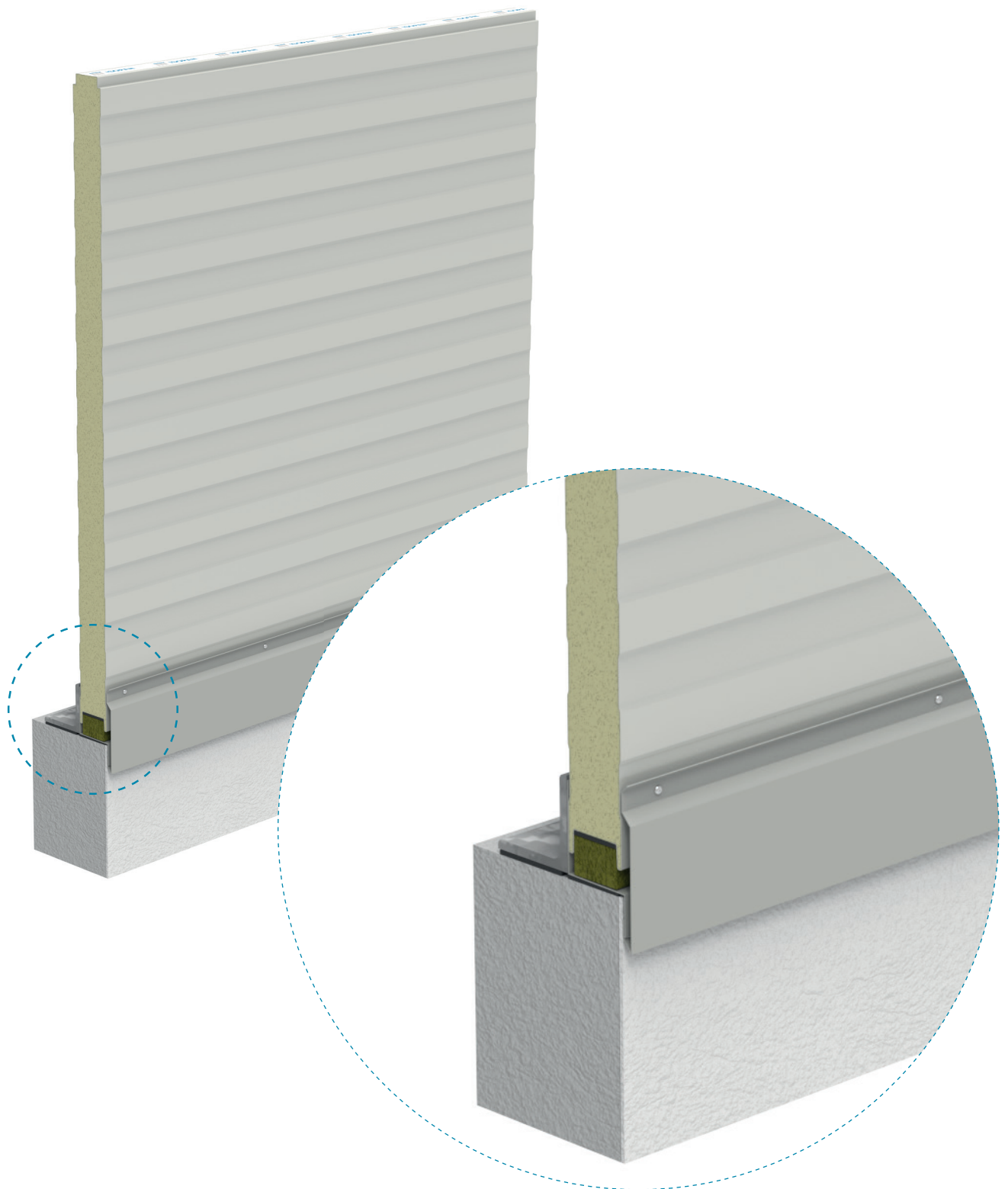
LEGEND

1. Isopan Wall sandwich panel
2. Self drilling screw for panel fastening - with metal plate
3. Prepainted metal flashing - External dripping
4. Gasket
5. Metal structure
6. Concrete structure

ATTENTION: the proposed solution does not constitute the project, and must be firstly assessed and evaluated by the designer and construction supervision. The designer is responsible for assessing the need to insert additional gasket and/or closing elements, even when not indicated in the drawing details. The property rights of this document belong to ISOPAN S.p.a. The contents can't be reproduced without prior written permission by the author. To choose the type of fastening, please refer to the screw type choice sheet; To choose the screw length, please refer to the data sheet for the correct screw length).

WP10

Ground connection - type 4



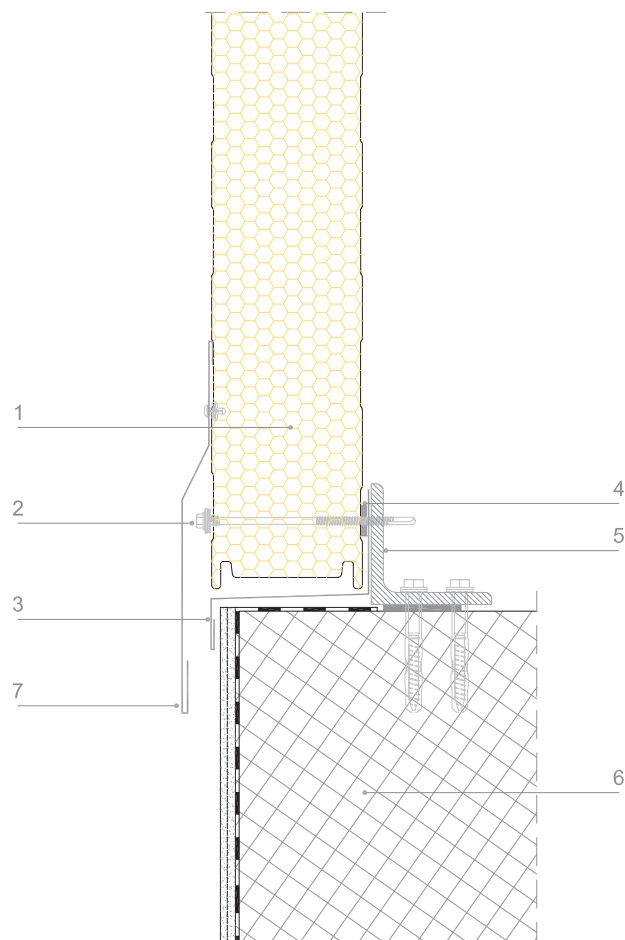
WP10

**ISOPAN**BUILDING ENVELOPE SOLUTIONS
by Manni Group

Ground connection - type 4



You can download the .dwg and .pdf files collection at isopan.com.



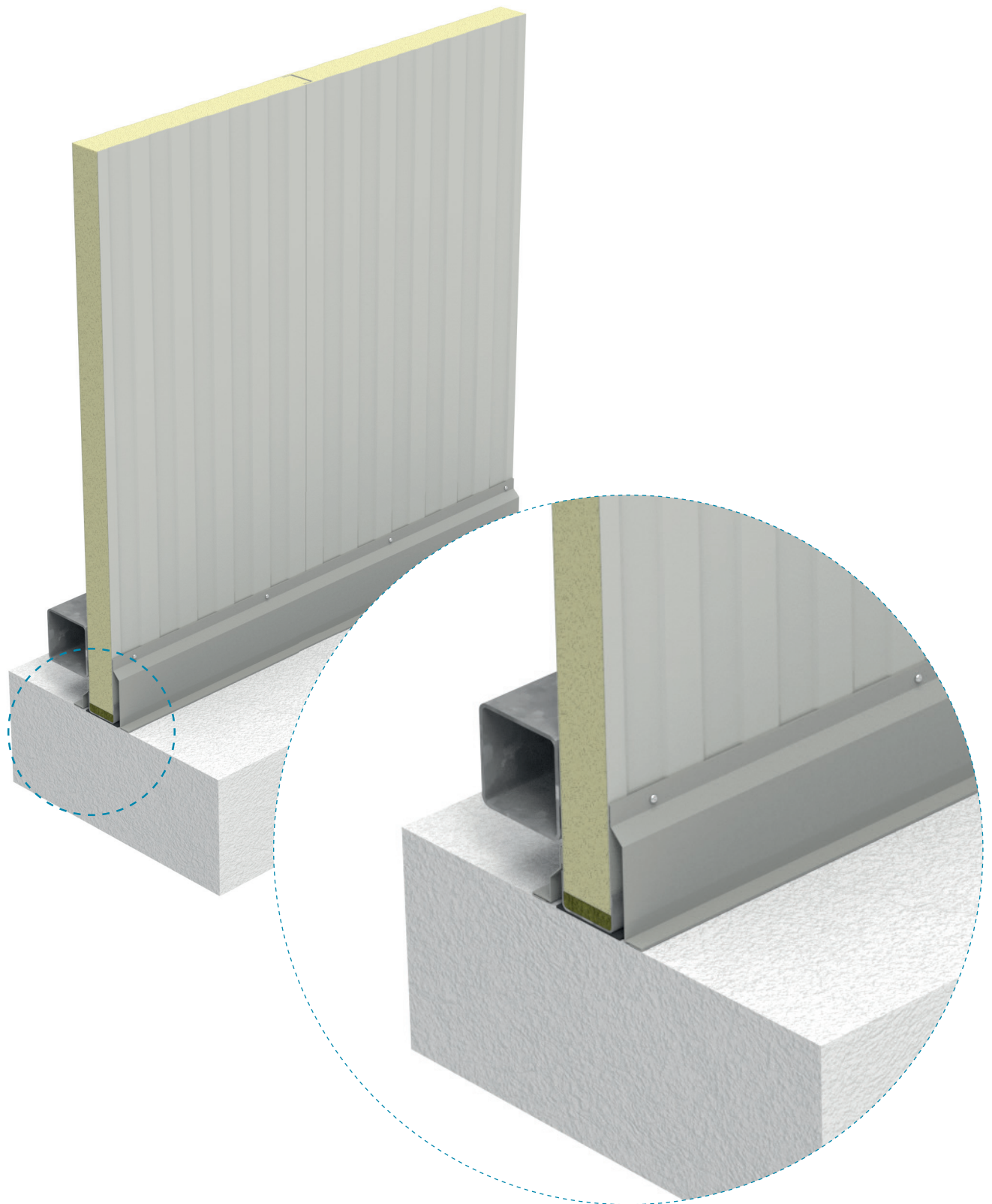
LEGEND

1. Isopan Wall sandwich panel
2. Self drilling screw for panel fastening
3. Pre-painted metal flashing - External dripping
4. Gasket
5. Metal structure
6. Concrete structure
7. External metal flashing

ATTENTION: the proposed solution does not constitute the project, and must be firstly assessed and evaluated by the designer and construction supervision. The designer is responsible for assessing the need to insert additional gasket and/or closing elements, even when not indicated in the drawing details. The property rights of this document belong to ISOPAN S.p.a. The contents can't be reproduced without prior written permission by the author. To choose the type of fastening, please refer to the screw type choice sheet; To choose the screw length, please refer to the data sheet for the correct screw length).

WP11

Ground connection - type 5



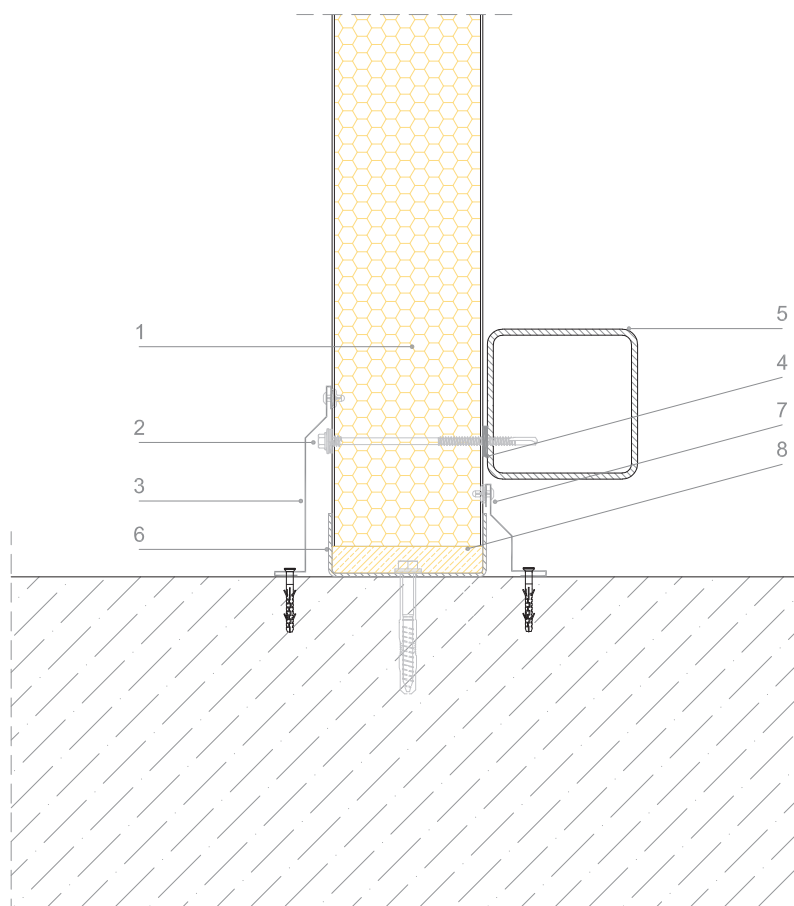
WP11

**ISOPAN**BUILDING ENVELOPE SOLUTIONS
by Manni Group

Ground connection - type 5



You can download the .dwg and .pdf files collection at isopan.com.



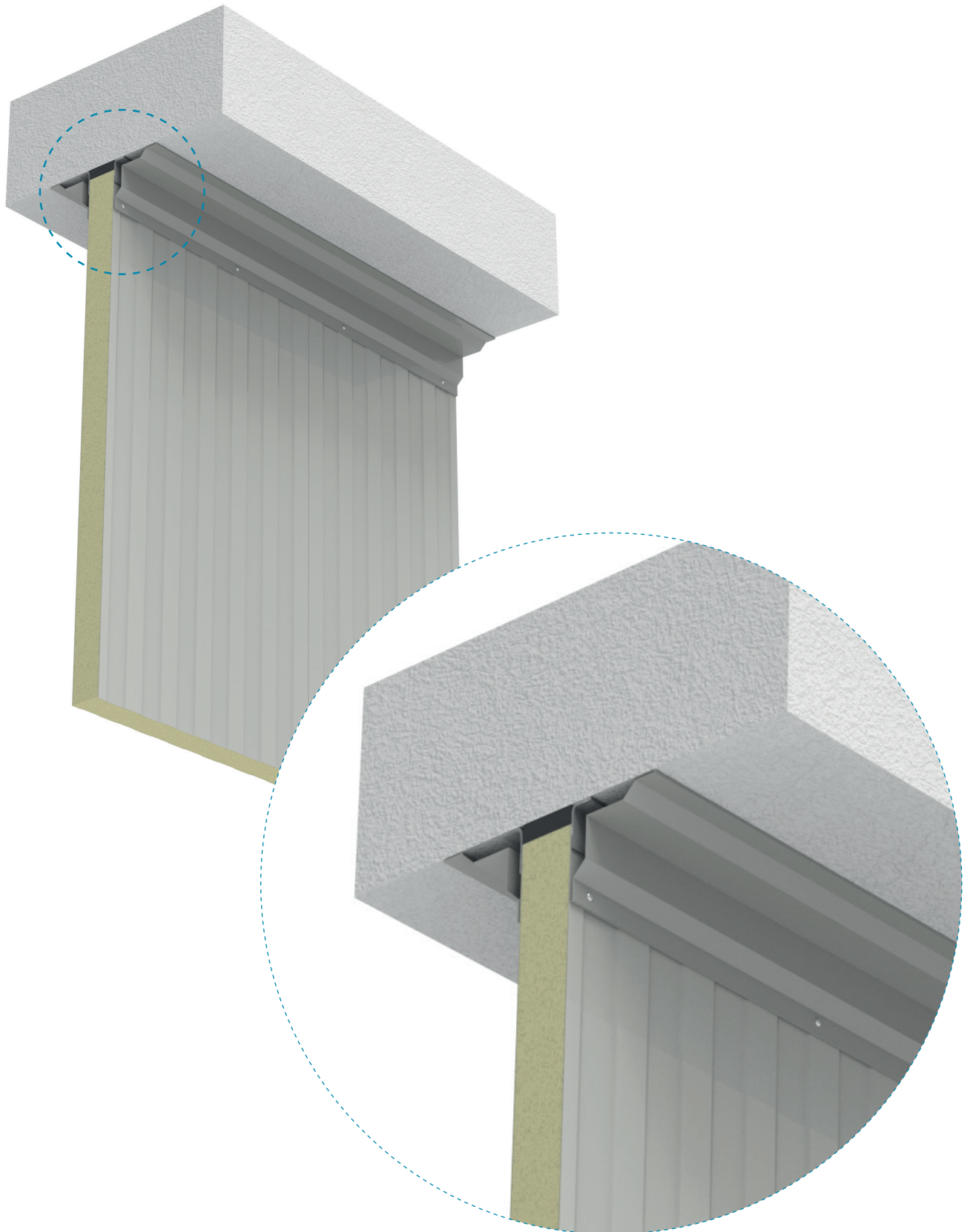
LEGEND

1. Isopan Wall sandwich panel
2. Self drilling screw for panel fastening
3. External Prepainted metal flashing
4. Gasket
5. Metal structure
6. "U" shaped metal profile for ground anchoring
7. Internal prepainted metal shaping
8. On-site insulating

ATTENTION: the proposed solution does not constitute the project, and must be firstly assessed and evaluated by the designer and construction supervision. The designer is responsible for assessing the need to insert additional gasket and/or closing elements, even when not indicated in the drawing details. The property rights of this document belong to ISOPAN S.p.a. The contents can't be reproduced without prior written permission by the author. To choose the type of fastening, please refer to the screw type choice sheet; To choose the screw length, please refer to the data sheet for the correct screw length).

WP12

Concrete ceiling connection

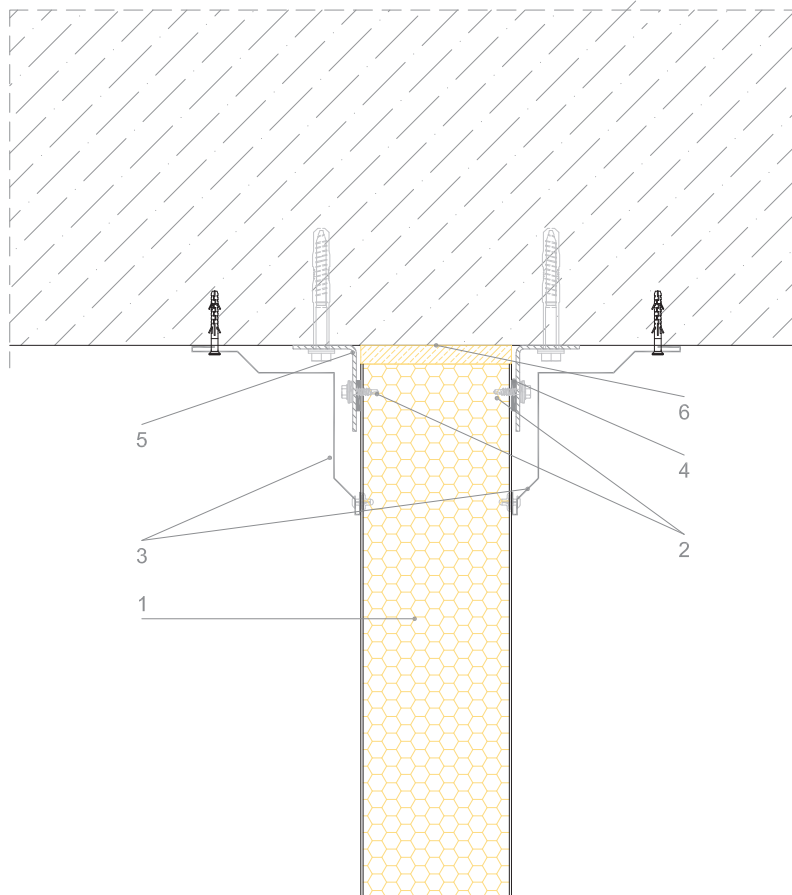


WP12

Concrete ceiling connection



You can download the .dwg and .pdf files collection at isopan.com.



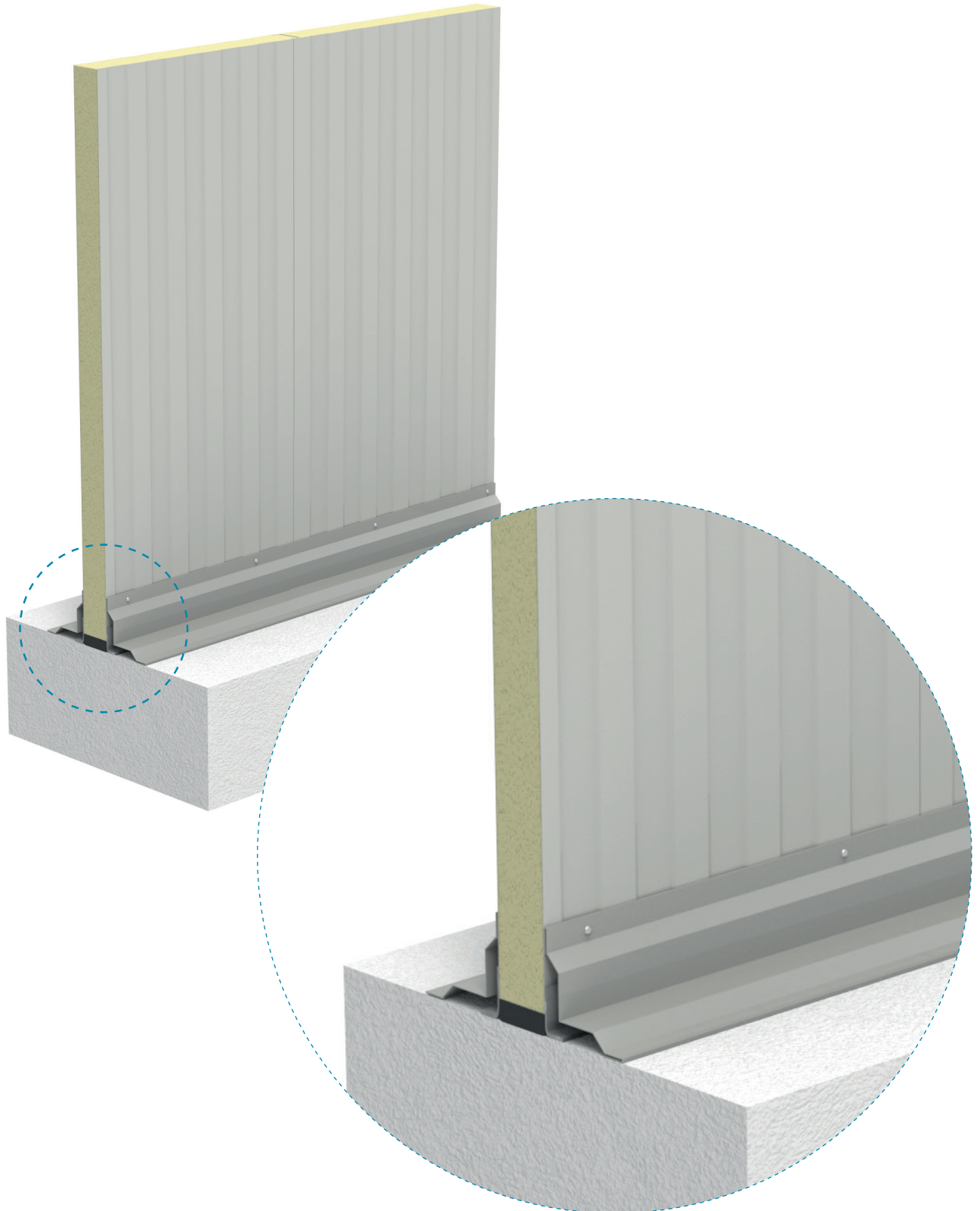
LEGEND

1. Isopan Wall sandwich panel
2. Short Self drilling screw for panel fastening
3. External and internal Prepainted metal flashing
4. Gasket
5. Anchoring metal profile
6. On-site insulating

ATTENTION: the proposed solution does not constitute the project, and must be firstly assessed and evaluated by the designer and construction supervision. The designer is responsible for assessing the need to insert additional gasket and/or closing elements, even when not indicated in the drawing details. The property rights of this document belong to ISOPAN S.p.a. The contents can't be reproduced without prior written permission by the author. To choose the type of fastening, please refer to the screw type choice sheet; To choose the screw length, please refer to the data sheet for the correct screw length).

WP13

Concrete Wall connection - Horizontal section

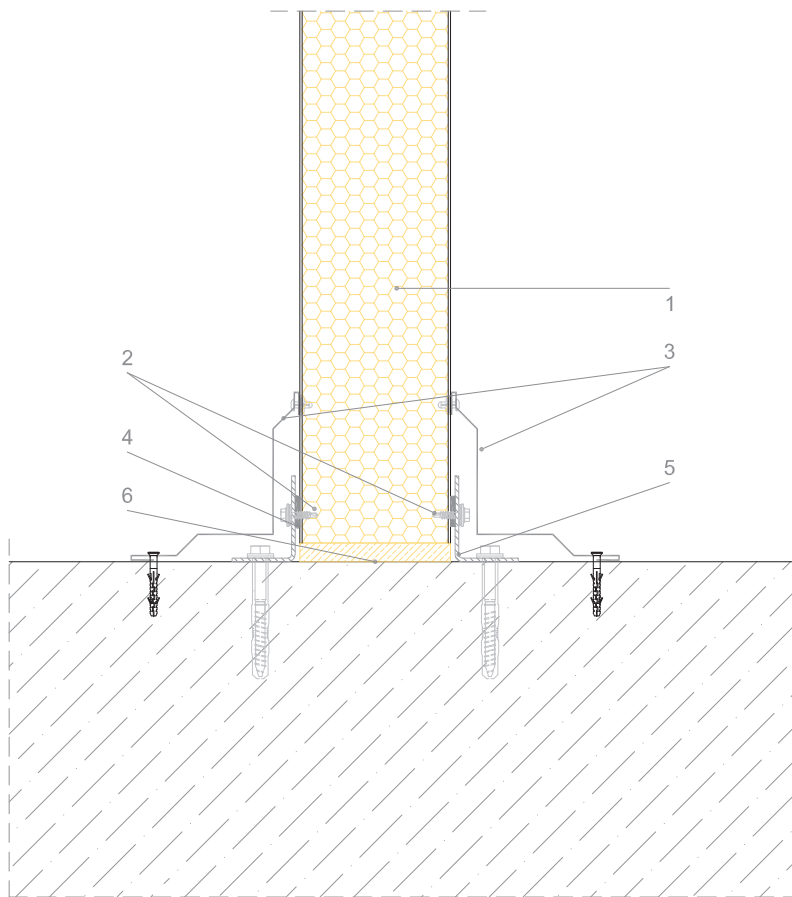


WP13

Concrete Wall connection - Horizontal section



You can download the .dwg and .pdf files collection at isopan.com.



LEGEND

1. Isopan Wall sandwich panel
2. Short Self drilling screw for panel fastening
3. External and internal Prepainted metal flashing
4. Gasket
5. Anchoring metal profile
6. On-site insulating

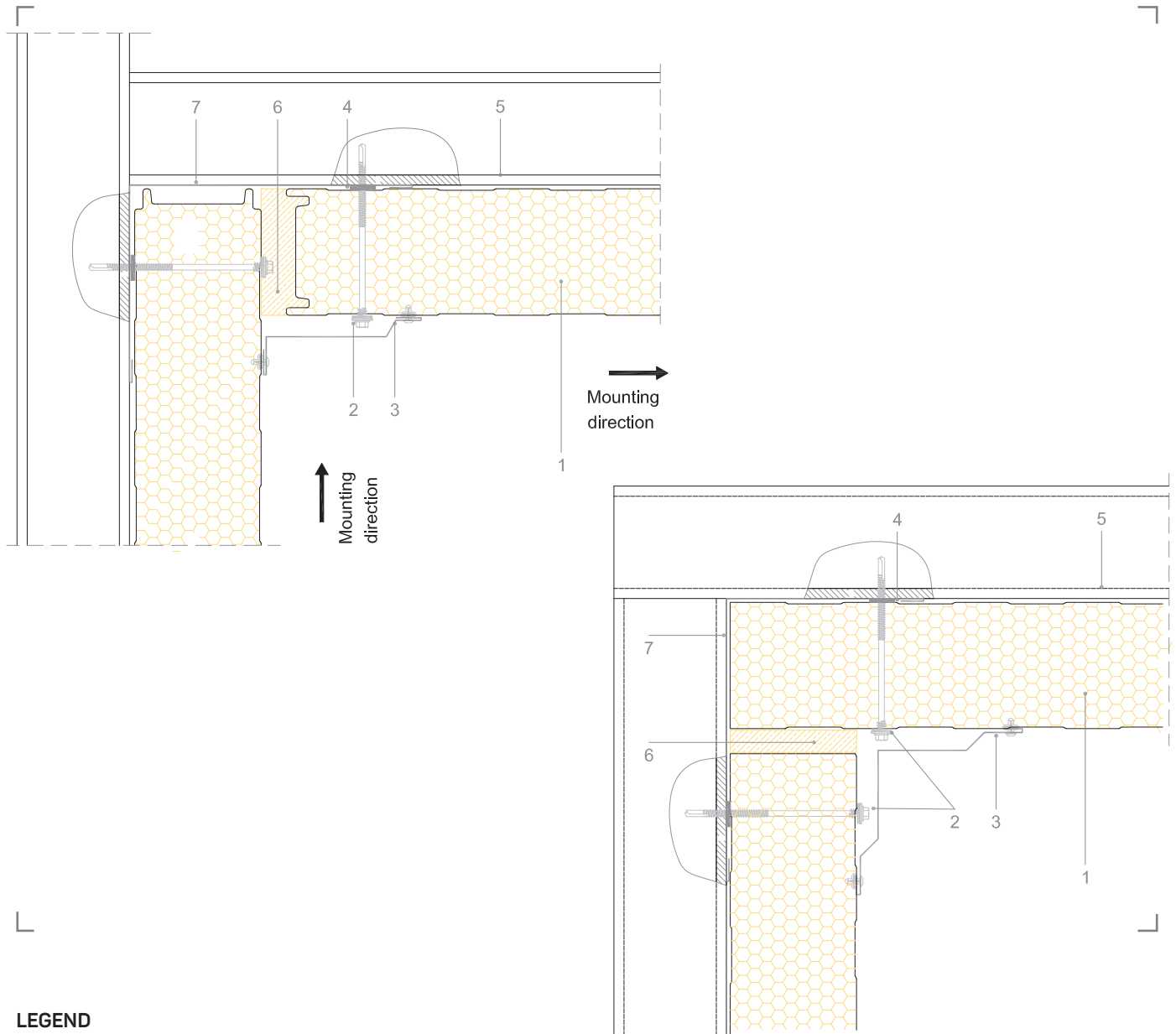
ATTENTION: the proposed solution does not constitute the project, and must be firstly assessed and evaluated by the designer and construction supervision. The designer is responsible for assessing the need to insert additional gasket and/or closing elements, even when not indicated in the drawing details. The property rights of this document belong to ISOPAN S.p.a. The contents can't be reproduced without prior written permission by the author. To choose the type of fastening, please refer to the screw type choice sheet; To choose the screw length, please refer to the data sheet for the correct screw length).

WP14

Corner connection - Horizontal section



You can download the .dwg and .pdf files collection at isopan.com.



LEGEND

1. Isopan Wall sandwich panel
2. Self drilling screw for panel fastening
3. Prepainted metal flashing - Corner closure
4. Gasket
5. Load bearing structure
6. On-site insulation
7. Prepainted metal flashing - Internal Corner closure

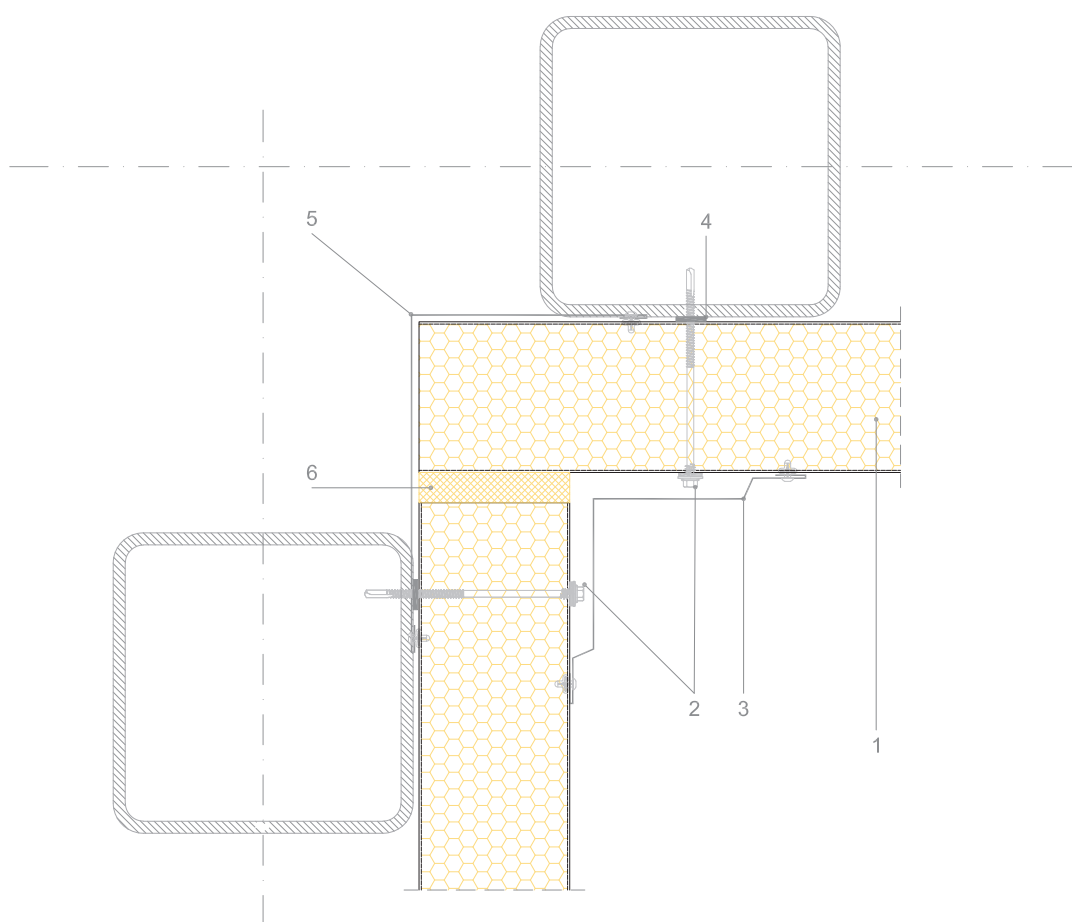
ATTENTION: the proposed solution does not constitute the project, and must be firstly assessed and evaluated by the designer and construction supervision. The designer is responsible for assessing the need to insert additional gasket and/or closing elements, even when not indicated in the drawing details. The property rights of this document belong to ISOPAN S.p.a. The contents can't be reproduced without prior written permission by the author. To choose the type of fastening, please refer to the screw type choice sheet; To choose the screw length, please refer to the data sheet for the correct screw length).

WP15

Corner connection - Horizontal section



You can download the .dwg and .pdf files collection at isopan.com.



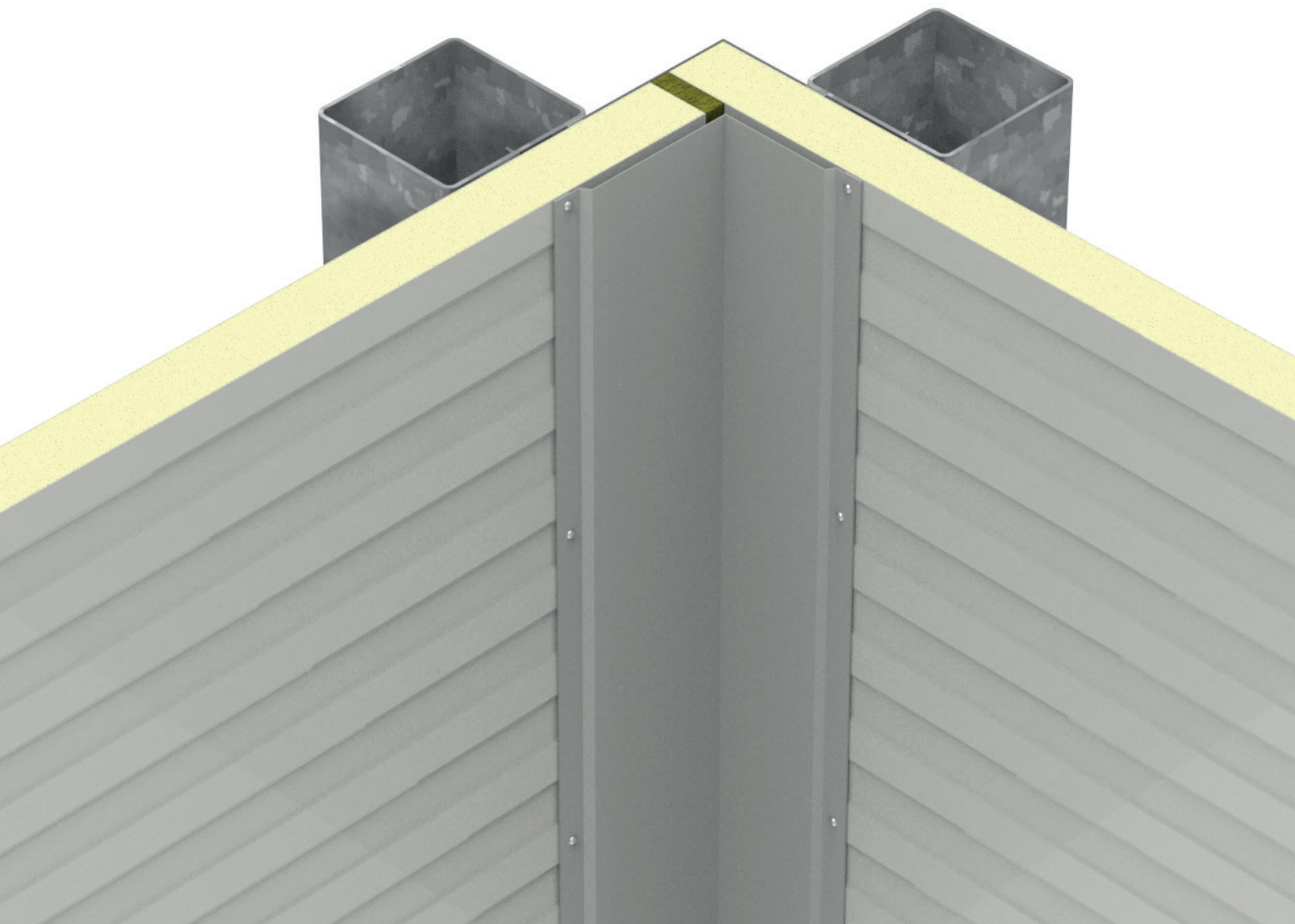
LEGEND

1. Isopan Wall sandwich panel
2. Self drilling screw for panel fastening
3. Pre-painted metal flashing - Corner closure
4. Gasket
5. On-site insulation
6. Primary steel structure
7. Secondary steel structure
8. Pre-painted metal flashing - Internal Corner closure

ATTENTION: the proposed solution does not constitute the project, and must be firstly assessed and evaluated by the designer and construction supervision. The designer is responsible for assessing the need to insert additional gasket and/or closing elements, even when not indicated in the drawing details. The property rights of this document belong to ISOPAN S.p.a. The contents can't be reproduced without prior written permission by the author. To choose the type of fastening, please refer to the screw type choice sheet; To choose the screw length, please refer to the data sheet for the correct screw length).

WP16

Corner connection - Horizontal section

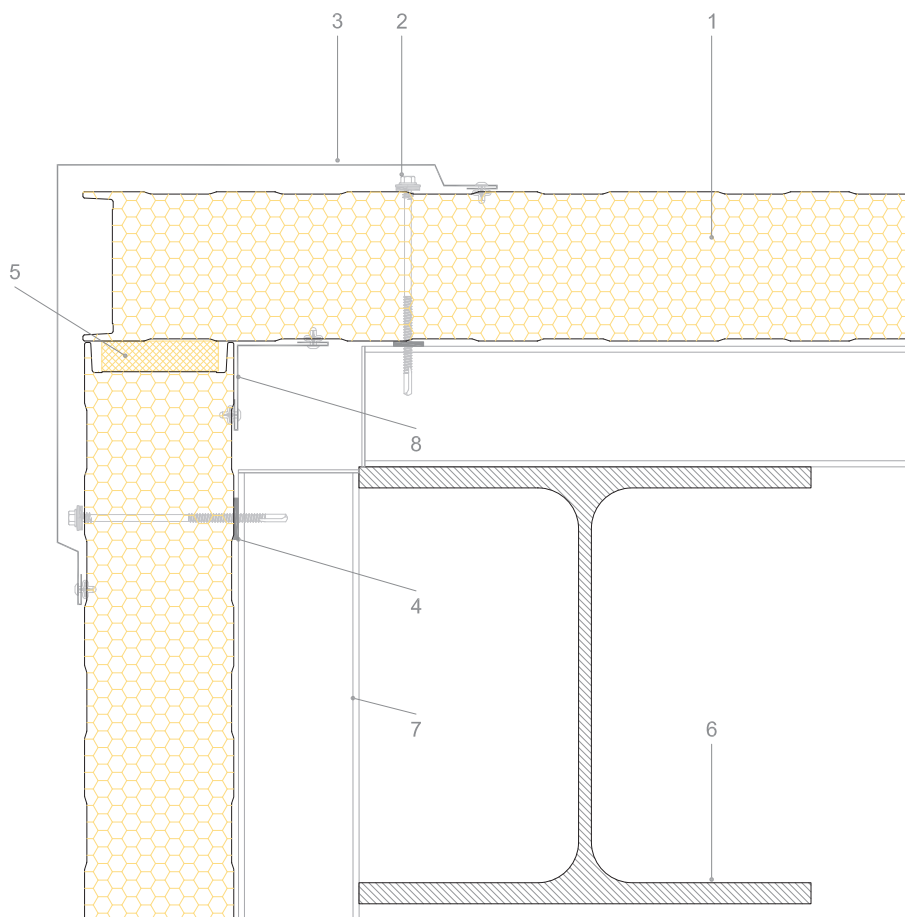


WP16

Corner connection - Horizontal section



You can download the .dwg and .pdf files collection at isopan.com.



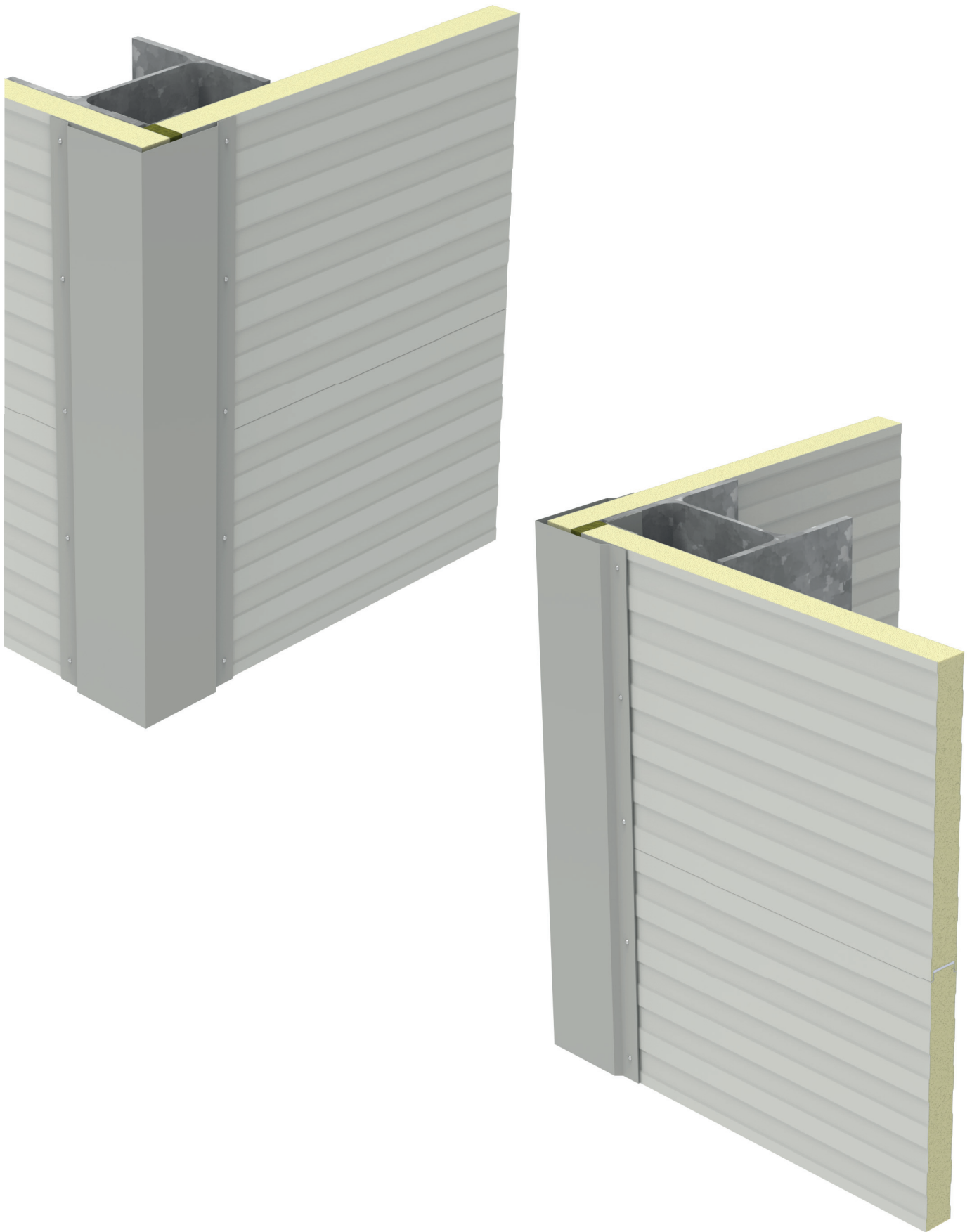
LEGEND

1. Isopan Wall sandwich panel
2. Self drilling screw for panel fastening
3. Prepainted metal flashing - External Corner closure
4. Gasket
5. Prepainted metal flashing - Internal Corner closure
6. On-site insulation
7. Load bearing structure

ATTENTION: the proposed solution does not constitute the project, and must be firstly assessed and evaluated by the designer and construction supervision. The designer is responsible for assessing the need to insert additional gasket and/or closing elements, even when not indicated in the drawing details. The property rights of this document belong to ISOPAN S.p.a. The contents can't be reproduced without prior written permission by the author. To choose the type of fastening, please refer to the screw type choice sheet; To choose the screw length, please refer to the data sheet for the correct screw length).

WP17

Corner connection - Horizontal section

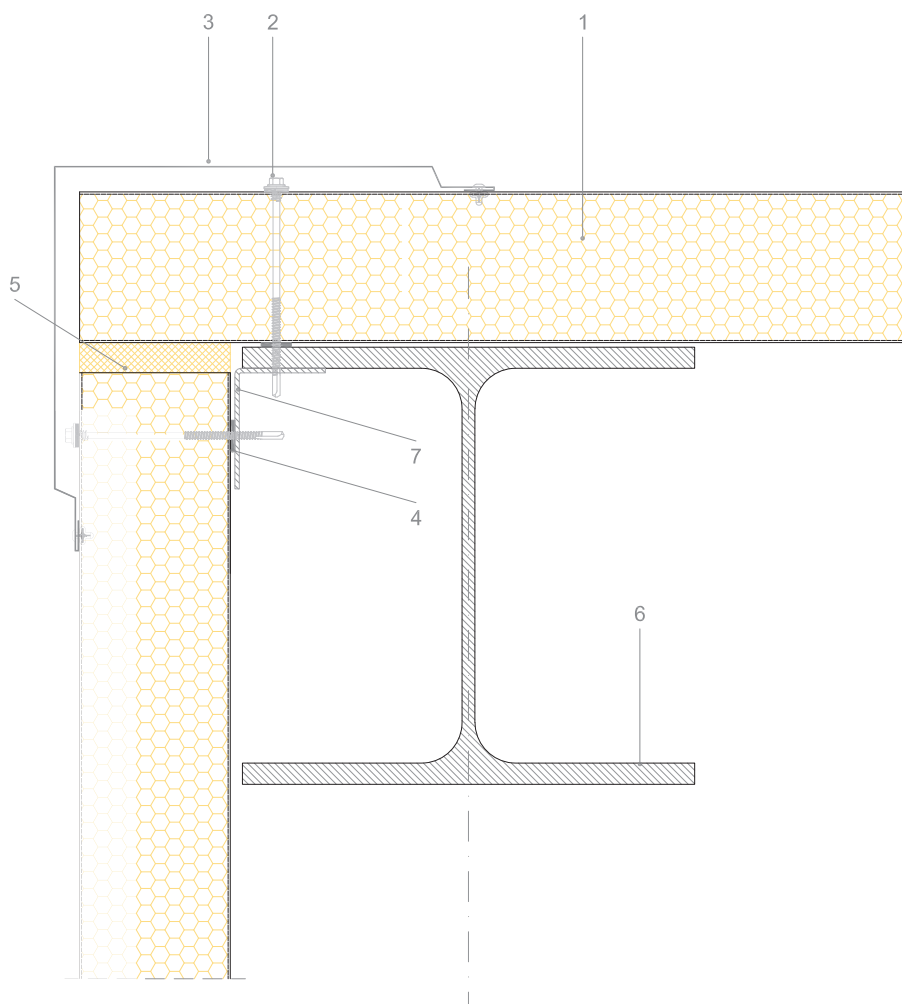


WP17

Corner connection - Horizontal section



You can download the .dwg and .pdf files collection at isopan.com.



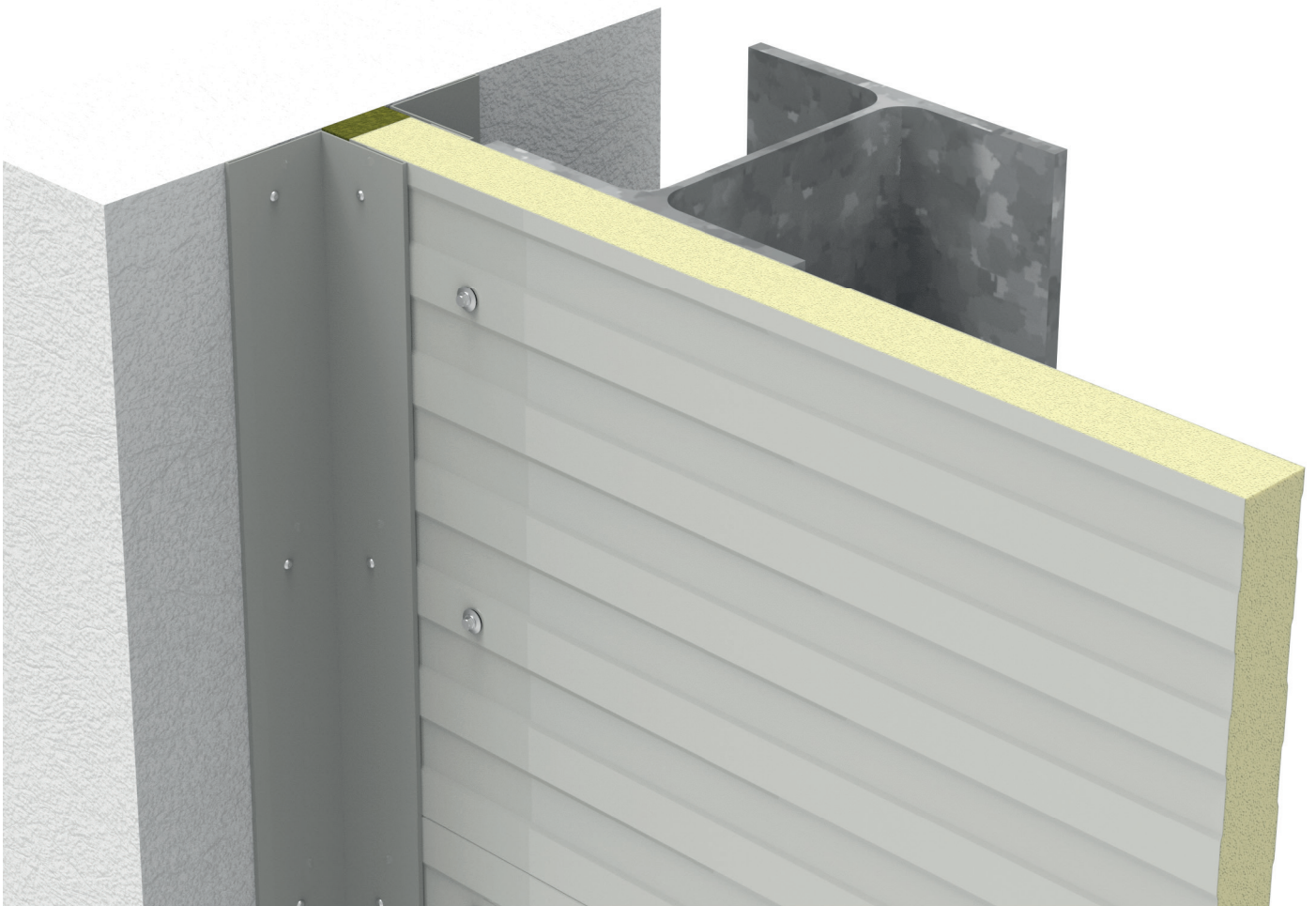
LEGEND

1. Isopan Wall sandwich panel
2. Self drilling screw for panel fastening
3. Pre-painted metal flashing - Corner closure
4. Gasket
5. On-site insulation
6. Primary steel structure
7. Steel profile welded

ATTENTION: the proposed solution does not constitute the project, and must be firstly assessed and evaluated by the designer and construction supervision. The designer is responsible for assessing the need to insert additional gasket and/or closing elements, even when not indicated in the drawing details. The property rights of this document belong to ISOPAN S.p.a. The contents can't be reproduced without prior written permission by the author. To choose the type of fastening, please refer to the screw type choice sheet; To choose the screw length, please refer to the data sheet for the correct screw length).

WP18

Wall structure connection - Horiz. section

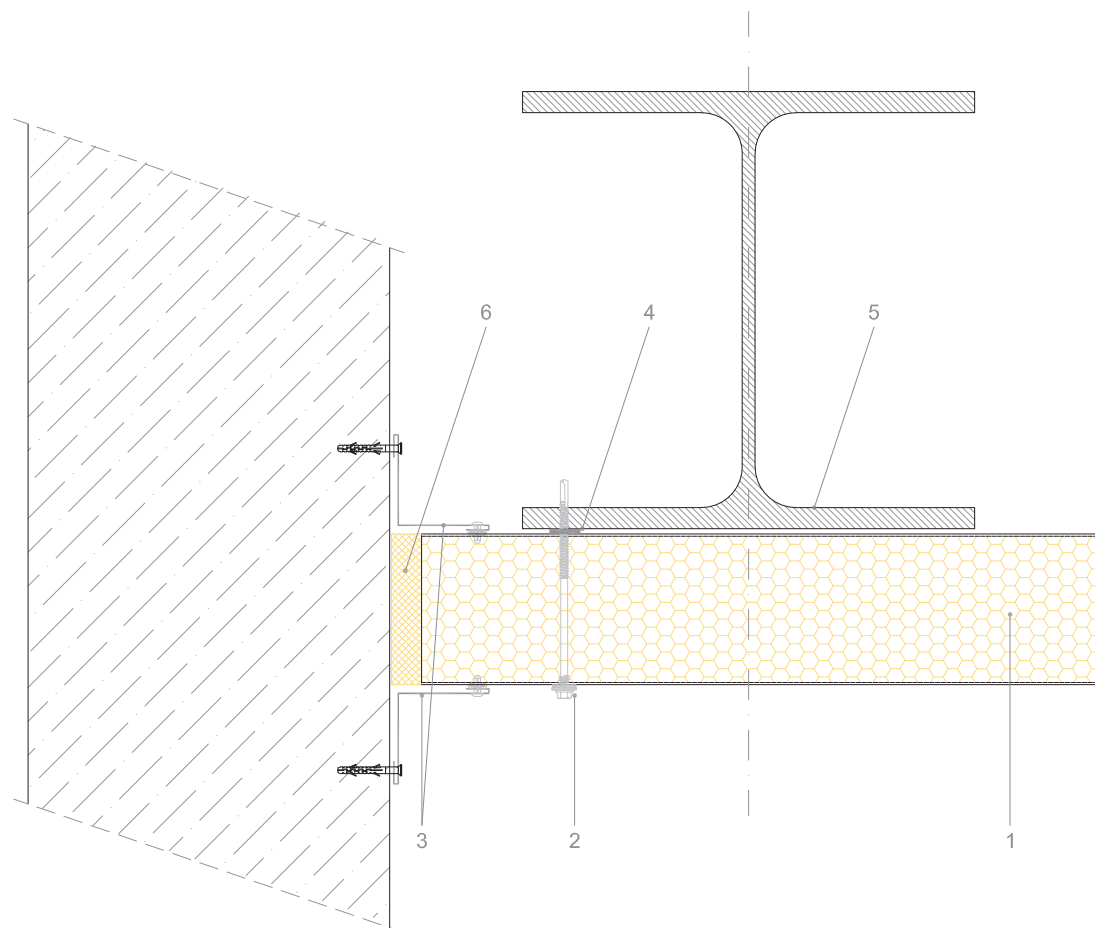


WP18

Wall structure connection - Horiz. section



You can download the .dwg and .pdf files collection at isopan.com.



LEGEND

1. Isopan Wall sandwich panel
2. Self drilling screw for panel fastening
3. Pre-painted metal flashing - wall joint closure
4. Gasket
5. Primary steel structure
6. On-site insulation

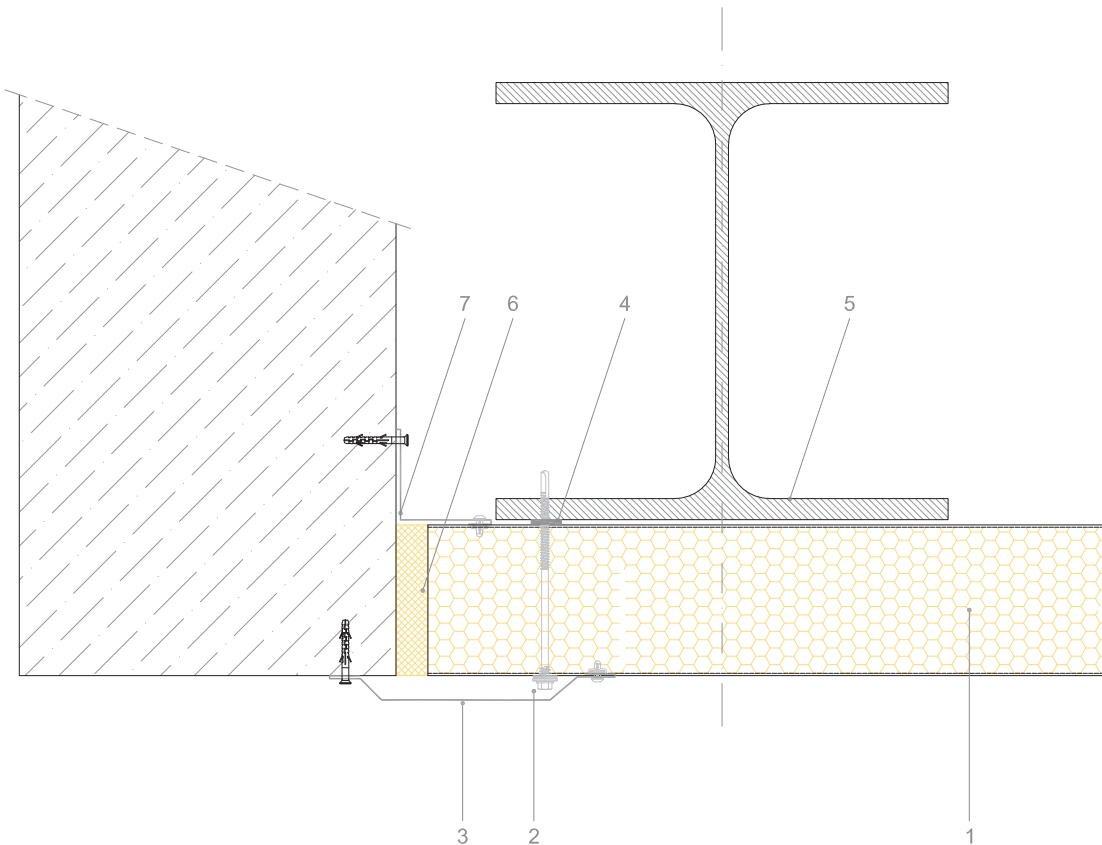
ATTENTION: the proposed solution does not constitute the project, and must be firstly assessed and evaluated by the designer and construction supervision. The designer is responsible for assessing the need to insert additional gasket and/or closing elements, even when not indicated in the drawing details. The property rights of this document belong to ISOPAN S.p.a. The contents can't be reproduced without prior written permission by the author. To choose the type of fastening, please refer to the screw type choice sheet; To choose the screw length, please refer to the data sheet for the correct screw length).

WP19

Wall structure connection - Horiz. section



You can download the .dwg and .pdf files collection at isopan.com.



LEGEND

1. Isopan Wall sandwich panel
2. Self drilling screw for panel fastening
3. Prepainted metal flashing - wall joint closure
4. Gasket
5. Primary steel structure
6. On-site insulation
7. Prepainted metal flashing - wall joint internal closure

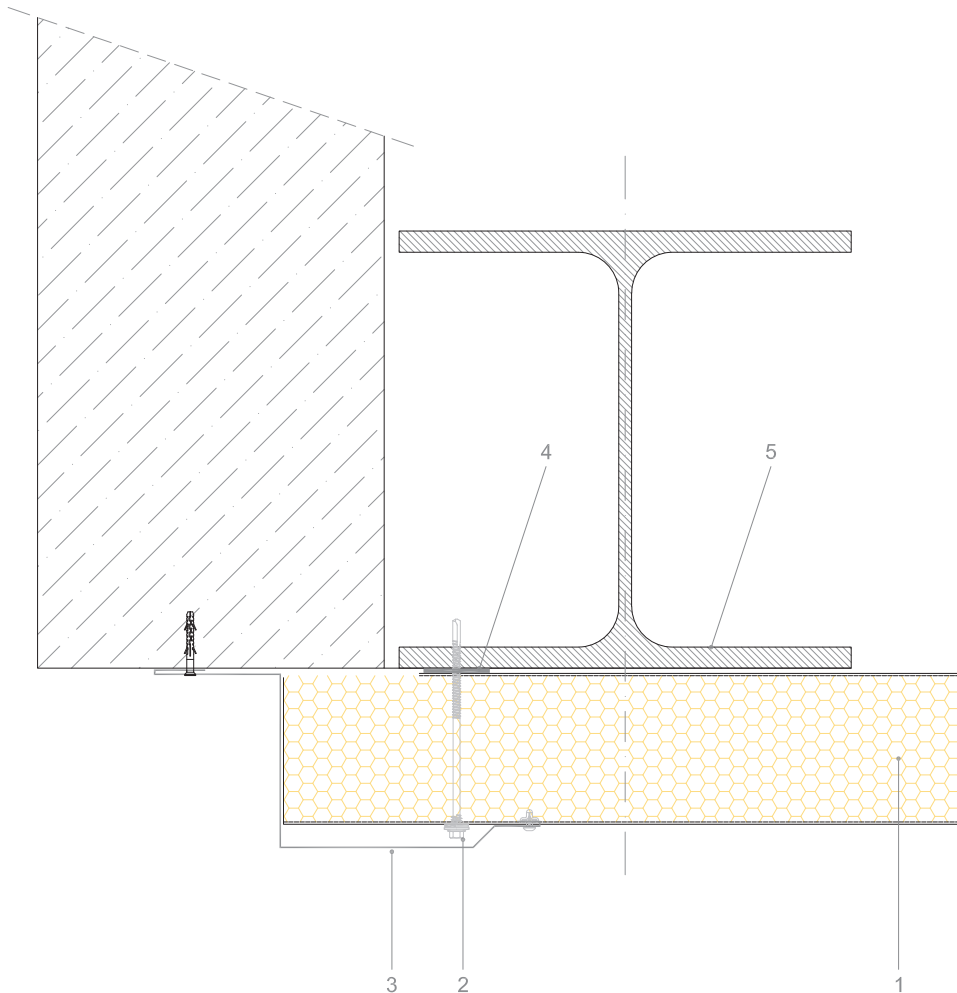
ATTENTION: the proposed solution does not constitute the project, and must be firstly assessed and evaluated by the designer and construction supervision. The designer is responsible for assessing the need to insert additional gasket and/or closing elements, even when not indicated in the drawing details. The property rights of this document belong to ISOPAN S.p.a. The contents can't be reproduced without prior written permission by the author. To choose the type of fastening, please refer to the screw type choice sheet; To choose the screw length, please refer to the data sheet for the correct screw length).

WP20

Wall structure connection - Horiz. section



You can download the .dwg and .pdf files collection at isopan.com.



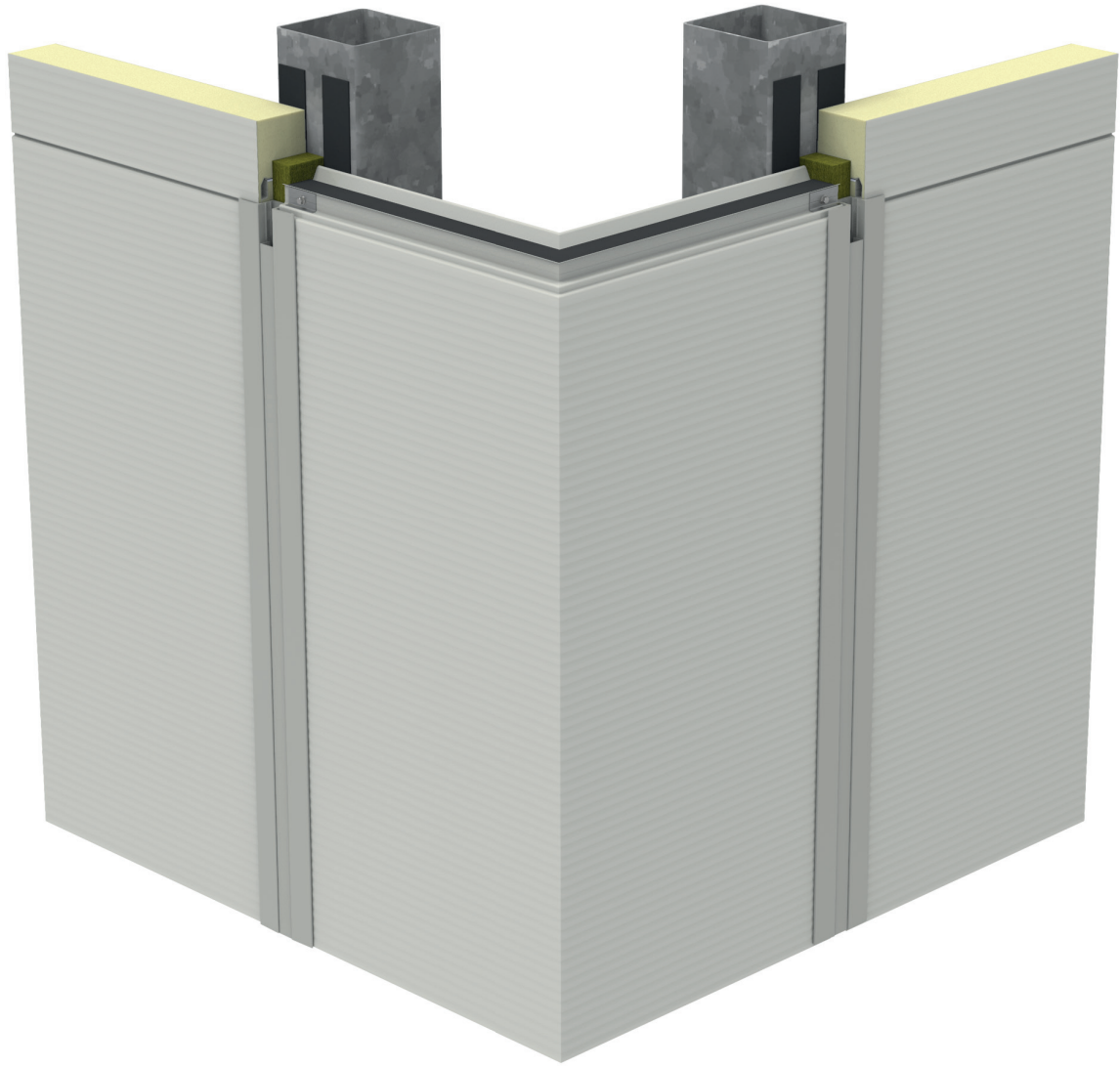
LEGEND

1. Isopan Wall sandwich panel
2. Self drilling screw for panel fastening
3. Prepainted metal flashing - wall joint closure
4. Gasket
5. Primary steel structure

ATTENTION: the proposed solution does not constitute the project, and must be firstly assessed and evaluated by the designer and construction supervision. The designer is responsible for assessing the need to insert additional gasket and/or closing elements, even when not indicated in the drawing details. The property rights of this document belong to ISOPAN S.p.a. The contents can't be reproduced without prior written permission by the author. To choose the type of fastening, please refer to the screw type choice sheet; To choose the screw length, please refer to the data sheet for the correct screw length).

WP21

Corner panels

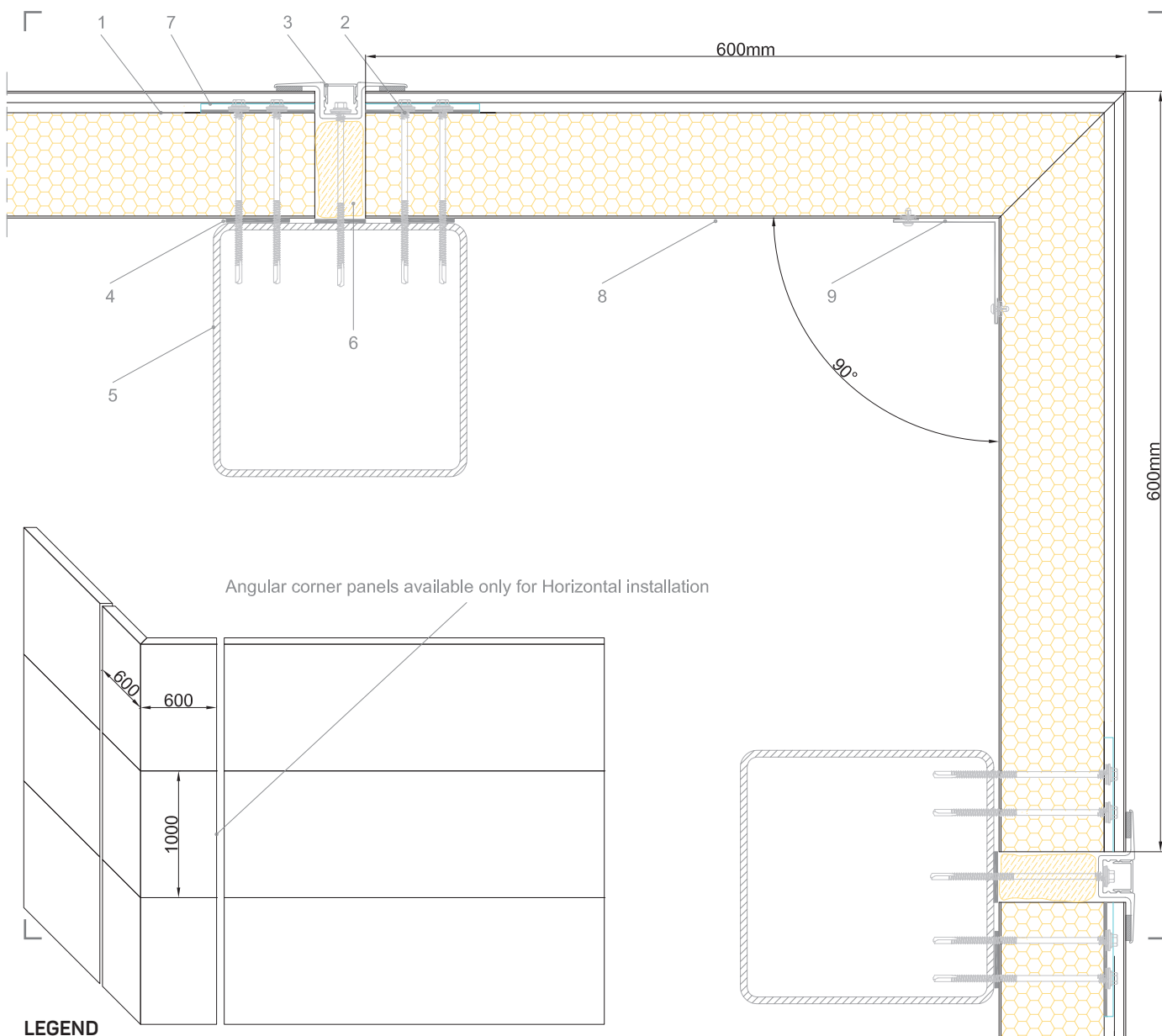


WP21

Corner panels



You can download the .dwg and .pdf files collection at isopan.com.



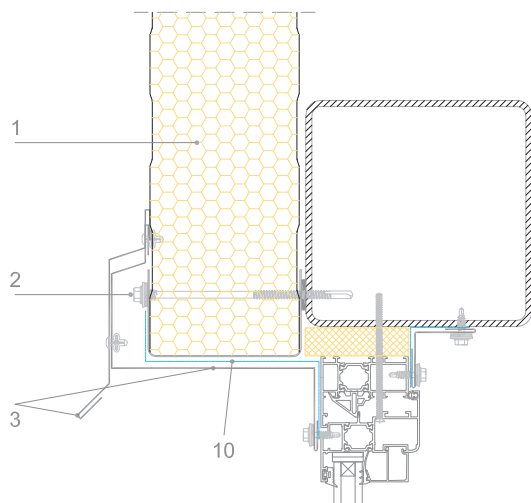
ATTENTION: the proposed solution does not constitute the project, and must be firstly assessed and evaluated by the designer and construction supervision. The designer is responsible for assessing the need to insert additional gasket and/or closing elements, even when not indicated in the drawing details. The property rights of this document belong to ISOPAN S.p.a. The contents can't be reproduced without prior written permission by the author. To choose the type of fastening, please refer to the screw type choice sheet; To choose the screw length, please refer to the data sheet for the correct screw length).

WP22

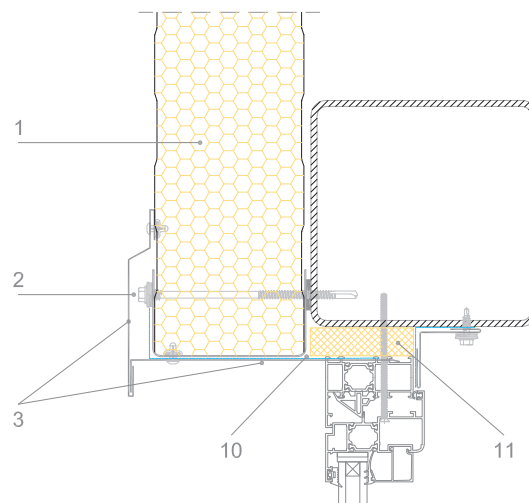
Window connection



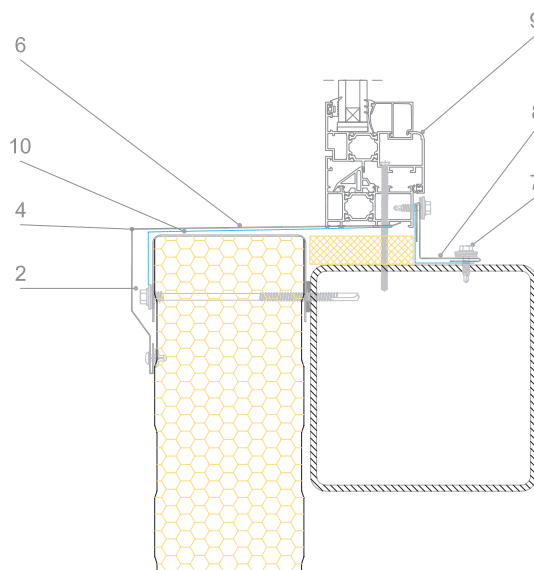
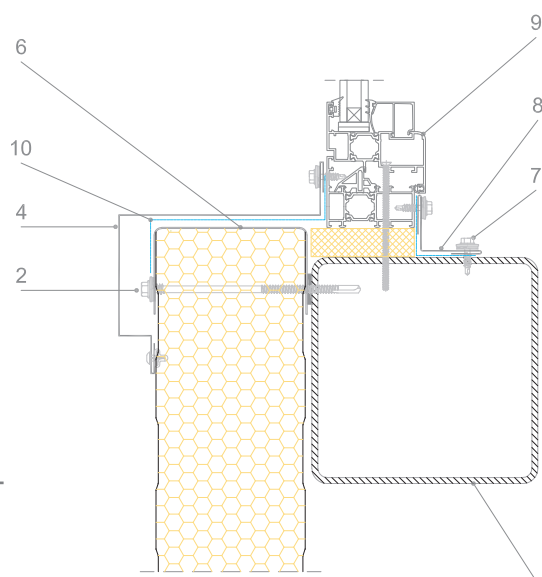
You can download the .dwg and .pdf files collection at isopan.com.



Fastening on window frame



Without fastening window frame



LEGEND

1. Isopan Wall sandwich panel
2. Self drilling screw for panel fastening
3. Pre-painted metal flashing for upper edge - dripping
4. Pre-painted metal flashing for lower edge - dripping
5. Primary steel structure
6. "C" shape metal profile for edge protection
7. Short self drilling screw
8. Internal pre-painted sheet
9. Window frame
10. Impermeabilization

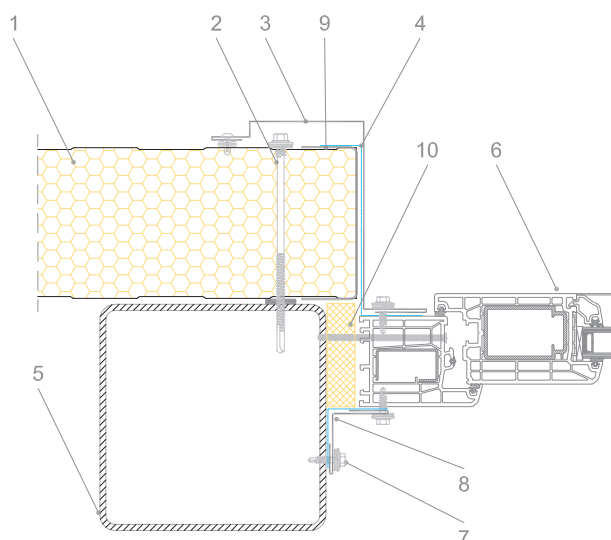
ATTENTION: the proposed solution does not constitute the project, and must be firstly assessed and evaluated by the designer and construction supervision. The designer is responsible for assessing the need to insert additional gasket and/or closing elements, even when not indicated in the drawing details. The property rights of this document belong to ISOPAN S.p.a. The contents can't be reproduced without prior written permission by the author. To choose the type of fastening, please refer to the screw type choice sheet; To choose the screw length, please refer to the data sheet for the correct screw length).

WP23

Window connection - horizontal section



You can download the .dwg and .pdf files collection at isopan.com.



L

LEGEND

1. Isopan Wall sandwich panel
2. Self drilling screw for panel fastening
3. Prepainted metal flashing for lateral edge
4. Impermeabilization
5. Primary steel structure
6. Window frame
7. Short self drilling screw
8. Internal prepainted sheet
9. "C" shape metal profile for edge protection

ATTENTION: the proposed solution does not constitute the project, and must be firstly assessed and evaluated by the designer and construction supervision. The designer is responsible for assessing the need to insert additional gasket and/or closing elements, even when not indicated in the drawing details. The property rights of this document belong to ISOPAN S.p.a. The contents can't be reproduced without prior written permission by the author. To choose the type of fastening, please refer to the screw type choice sheet; To choose the screw length, please refer to the data sheet for the correct screw length).

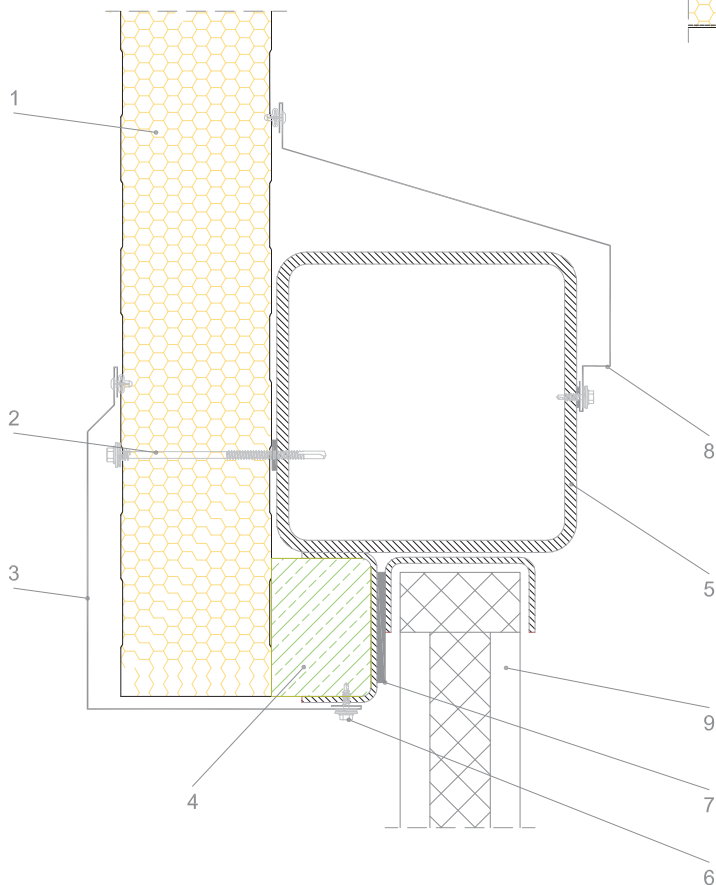
WP24

Industrial door connection

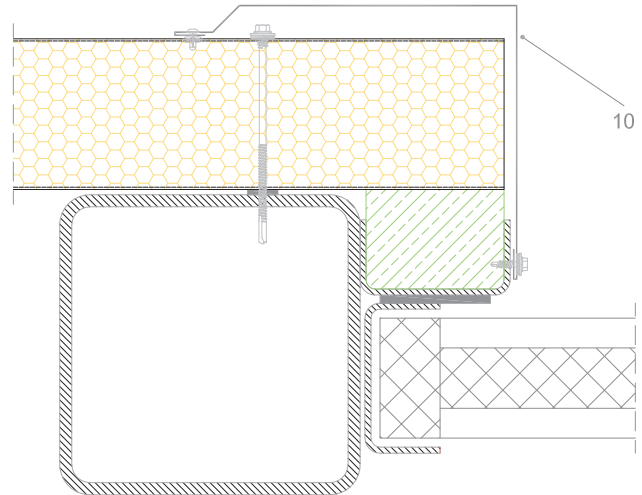


You can download the .dwg and .pdf files collection at isopan.com.

Vertical section



Horizontal section



LEGEND

1. Isopan Wall sandwich panel
2. Self drilling screw for panel fastening
3. Prepainted metal flashing for upper edge - dripping
4. Prepainted metal flashing for lateral edge
5. Primary steel structure
6. "C" shape metal profile for edge protection
7. Gasket
8. Internal prepainted sheet
9. Industrial Door frame

ATTENTION: the proposed solution does not constitute the project, and must be firstly assessed and evaluated by the designer and construction supervision. The designer is responsible for assessing the need to insert additional gasket and/or closing elements, even when not indicated in the drawing details. The property rights of this document belong to ISOPAN S.p.a. The contents can't be reproduced without prior written permission by the author. To choose the type of fastening, please refer to the screw type choice sheet; To choose the screw length, please refer to the data sheet for the correct screw length).



ISOPAN

BUILDING ENVELOPE SOLUTIONS
by Manni Group

www.isopan.com



ITALY

Registered and Administrative HQ
Verona | Italy

Isopan Spa
Verona | Italy
Frosinone | Italy

WORLD

ISOPAN IBERICA
Tarragona | Spain

ISOPAN EST
Bucharest | Romania

ISOPAN DEUTSCHLAND
Halle (Saale) | Germany

ISOPAN RUS
Volgograd | Russia

ISOCINDU
Silao | Mexico

SALES COMPANIES

ISOPAN FRANCE
Paris | France

ISOPAN MANNI GROUP CZ
Praha | Czech Republic